

Welcome!

Leddy Park Comprehensive Plan

Open House #1

- Leddy Park is a 69-acre parcel zoned **Recreation/Greenspace** (RCO) and provides the community of Burlington a beautiful place to participate in **recreational activities** and engage with **natural areas** both in the park and on/in Lake Champlain.
- The Leddy Park Comprehensive Plan builds upon **previous meetings** and **community discussions** to provide us with a **strategic roadmap** for future improvements to the park.
- Several **opportunities for public and stakeholder input** will be provided throughout the planning process including digital options, public meetings/open houses, and directly engaging with park users on the site.
- This Open House is intended to be an **information sharing** event to **gather feedback from you** about the future design of the park.
- **Your feedback** will help us identify how to **improve connections** between different uses on and adjacent to the park, **prioritize opportunities** for environmental resource management, and **identify** needed **infrastructure** and **amenities** to support visitors and park users.

We are here today!

This project will follow these planning stages:



ENVISION

We are bringing stakeholders together to determine a vision for a defined problem.



REFINE

We are engaging the community to help shape a project or idea.



UPDATE

We are sharing the process and providing an update on the work to date.

WAYS TO PROVIDE INPUT TONIGHT!

1

Interactive boards at project stations and a presentation at 6pm.

2

City staff and volunteers are present for one-on-one conversations.

3

An open comment box is available at the sign-in station.

The Comprehensive Plan

Description, Purpose & Approach

The Leddy Park Comprehensive Plan will provide a clear vision and cohesive roadmap for the future of Leddy Park, delivered through a highly collaborative and community-driven process. The Comprehensive Plan will identify how to connect the diverse uses on the site, prioritize opportunities for environmental resource management, and determine what infrastructure is needed to support visitors in the future. The Comprehensive Plan will build upon decades of community conversations around Leddy Park, and the community visioning meeting that occurred in 2019 .

Major elements of the Comprehensive Plan include assessing existing conditions through site inventory and analysis, the exploration of “Park Opportunity Diagrams” at the first public open house in June, the development of up to three “Site Plan Concepts” to be reviewed at a second public open house in the fall of 2022, and the subsequent refinement of alternatives into a preferred site plan and accompanying Comprehensive Plan document.

Core Principles

Connectivity + Access

Exploring internal site relationships as well as connectivity from the Greenway and surrounding neighborhoods while identifying opportunities to introduce Universal Access on and around the site.

Ecological + Site Sustainability

Ensuring that new and existing park features and proposed improvements are sensitive to the existing ecosystem and shoreline while considering short and long term sustainability.

Expanded Recreation and Wellness Opportunities

Assessing the current and future activities and opportunities at Leddy Park to further enliven and promote opportunities for all.

ENGAGEMENT OPPORTUNITIES & SCHEDULE

- 📅 Public Open House & Online Survey #1 — June 2, 2022
- 📅 Tabling and Intercept Surveys — June - August 2022
- 📅 Public Open House & Online Survey #2 — August/Sept. 2022
- ✅ Comprehensive Plan Complete — December 2022

* In-person and online events will include the same information and questions



STAY IN THE LOOP!
<https://EnjoyBurlington.com/Leddy-Park-Comprehensive-Plan/>

About Leddy Park

Leddy Park is a REGIONAL PARK. These parks provide amenities for the entire city, surrounding communities, and visiting tourists. Parking is available for many visitors who drive to these parks, but there are often walkable amenities for immediate neighbors. By virtue of their size, regional parks provide unique features like woodlands, trails, natural resource areas, water bodies, major sports complexes, historic sites, beaches, and camping.

Site History

- The area surrounding present day Burlington and Leddy Park was home to Abenaki people long before European settlers entered this region and was originally know as “**Nonnigonikon Winooskik**” (the Winooski Site).
- As European settlement of Burlington grew during the 19th century, the area now known as Leddy Park was used as an industrial property. The Burlington Rendering Company began using the North Avenue property in 1904 and operated until the late 1960s.
- The City of Burlington gained ownership of the property in 1971 with the intent to use it as a public open space with lake access.
- By 1978, Leddy Park was officially established with the Gordon H. Paquette Ice Arena and large parking lot and continued its recreational evolution over the next several decades.
- Today, Leddy Park is Burlington’s largest regional park and home to multiple rec fields, a portion of the Burlington Greenway, sports courts, and other amenities.
- Remnant stands of red pine tower in Leddy Park as a reminder of the timber plantations that were planted across Vermont between the 1920s and 1960s. Red pine was widely used at the time, is a fast growing species, and was a lucrative cash crop. Because plantations are monocultures the ecological value of these remaining stands is limited which poses an opportunity to release some of the pines and introduce native species.

2019 Leddy Park Visioning Project

In 2019 The City of Burlington asked the community a series of questions about their future vision for Leddy Park. An in-person event was held and an online survey was distributed in April of 2019. An estimated 150 people participated. See below for some of the results. Full visioning meeting and survey results are available at <https://EnjoyBurlington.com/Leddy-Park-Comprehensive-Plan/>



What we asked. What we heard.

What New Recreational Activities or Facilities Would You Like?

- Improved playground • Pool • Bocce Court • Bike Park • Ping pong table
- Snack bar • Picnic pavilion • Trails • Nature play • Year-round bathrooms • Outdoor skating rink • Boat access • Nature tours • Improvements to current facilities • Keep it as it is

Where are Trails and Other Facilities in Need of Repair?

- A re-route of the trail north of the athletic fields
- Better trail markers
- It would be great to formalize the east/west trail to North Ave.
- Lake access trails eroded
- Bike connections to the park
- The north trail
- Remove poison ivy
- Paths between park facilities

What Resources or Other Important Natural Features on the Site Can You Tell Us About?

- The beach • Ravine needs improvement • Wooded areas • Wildflowers: Red Trillium and Bloodroot • Concentrate athletic use

What Other Thoughts do You Have?

- Dog waste • Poison Ivy • Bluff erosion • Fee station
- Keep the park natural • Adult soccer leagues • Pickleball tournament • Build a bike park
- Keep the park undeveloped
- Dogs • Outdoor classes • Over use and improper use of the park • Separate restrooms

What are Your Favorite Vistas, Viewpoints or Resting Areas?

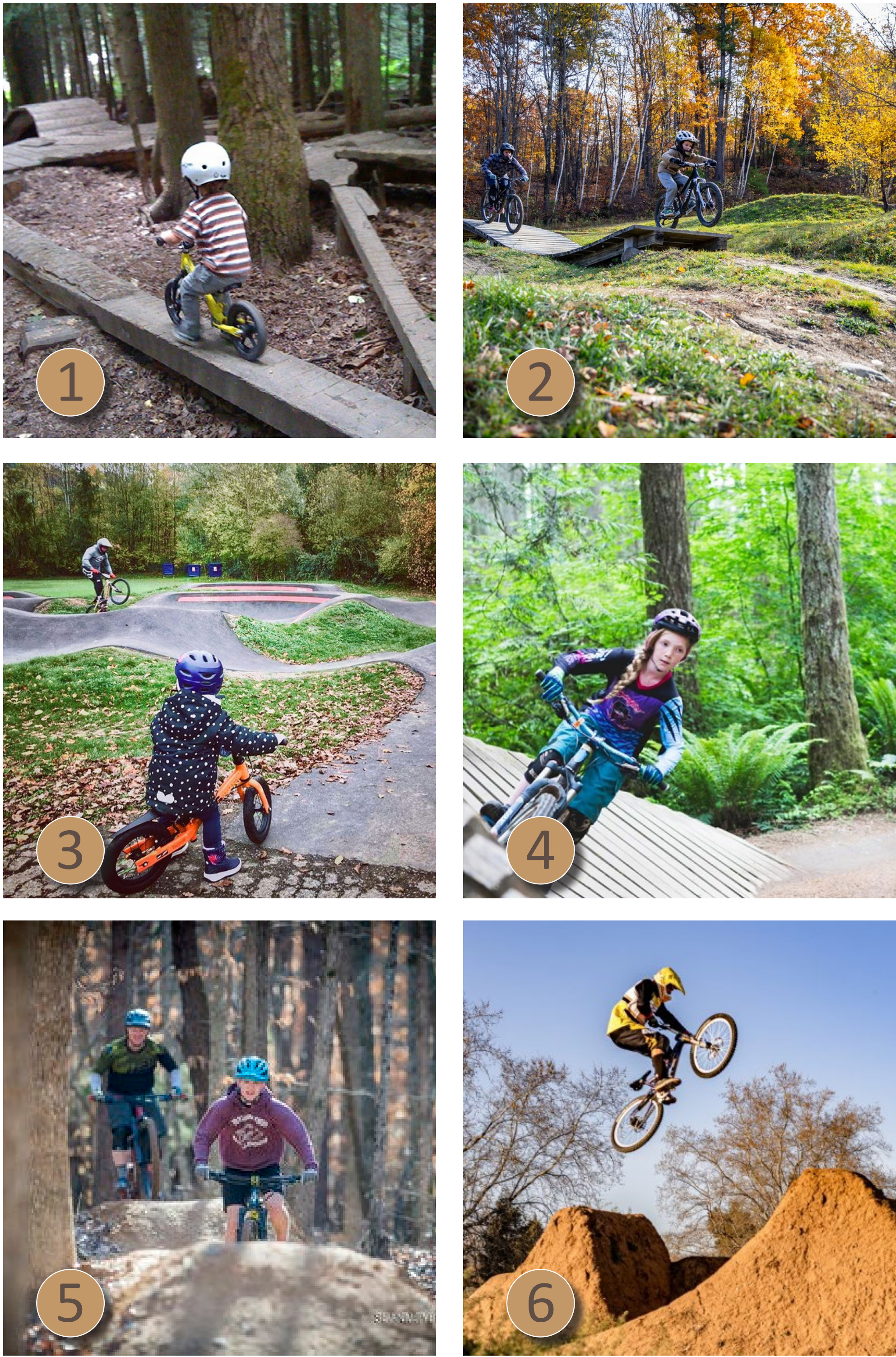
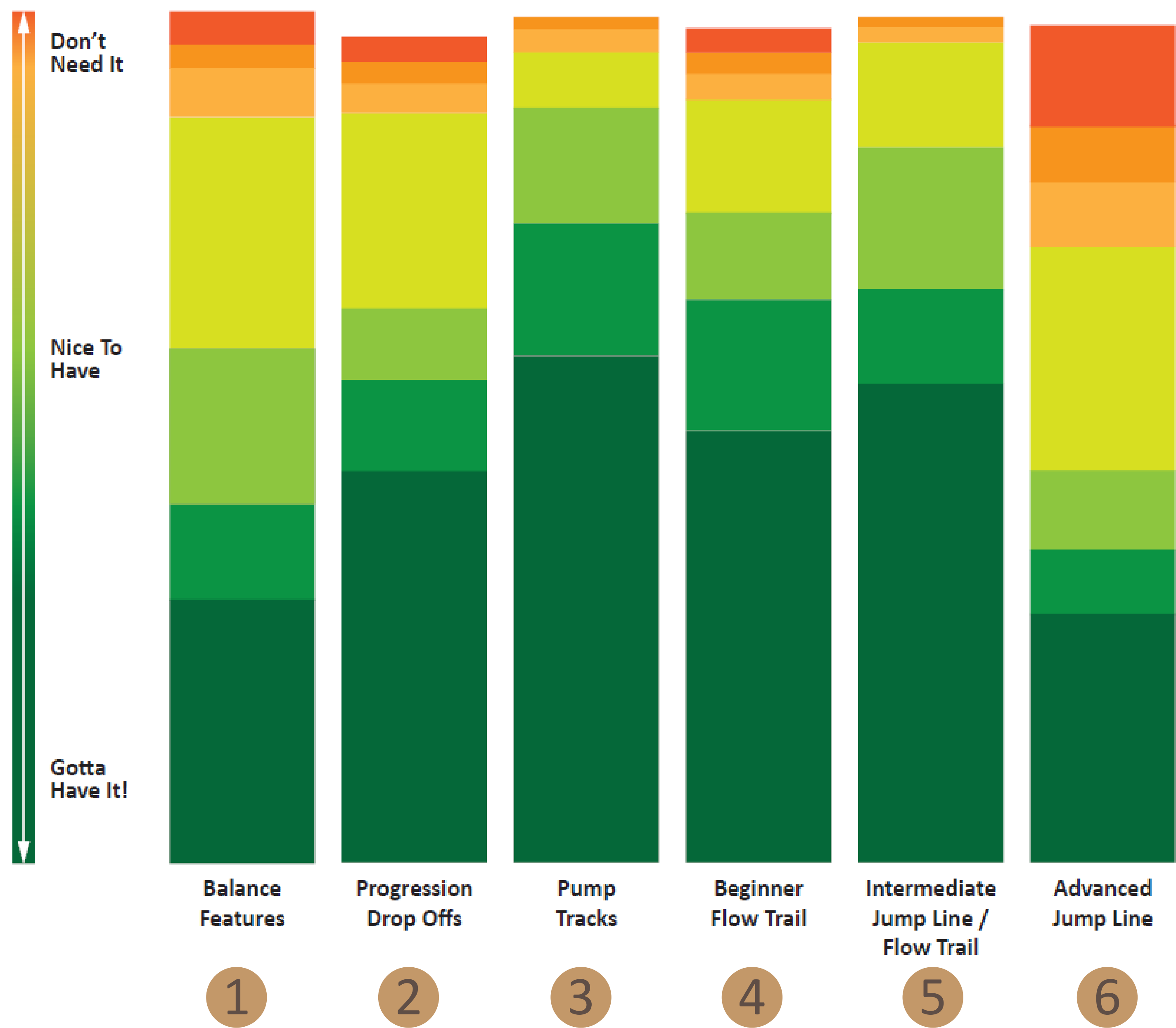
- The trails • Beach • Soccer fields • The park itself • Bluffs • Picnic areas
- Wooded trails

2021 Bike Park Feedback

In October 2020 a public meeting was hosted to ask about specific preferred features in a bike park design. An estimated 20 people participated in person and 80 people participated in an online survey.

What we asked. What we heard.

What Amenities Would You Like to See?



Existing Conditions



Beach Access



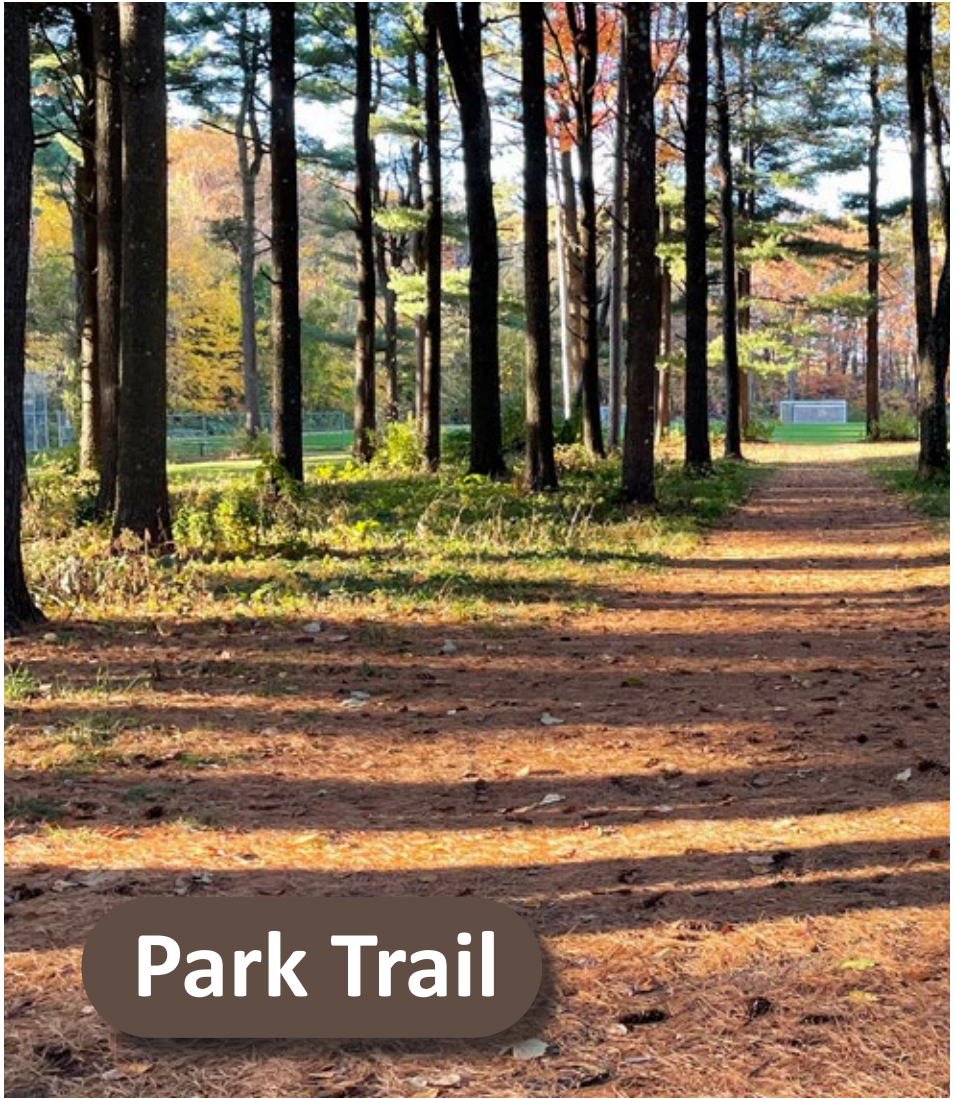
Entry Drive



Gabion Wall



Stormwater Facility



Park Trail



Beach



Stairs



Small Parking Lot



Main Parking Lot



Sports Courts

IMPROVE UNSTABLE SLOPES & DRAINAGE

- Investigate contributing sources to erosion & possible treatments prior to discharge in the gully
- Evaluate solutions to eliminate down cutting and promote slope stabilization

Burlington Greenway

PROMOTE TRAIL SUSTAINABILITY

- Decrease ecological degradation from trails by clarifying trail system and relocating perimeter trail out of existing drainage

ENHANCE FOREST ECOLOGY

- Harvest trees to increase species diversity, reduce shade and pine needle cover on sports courts, and to allow rec fields to dry out

EVALUATE SURFACE COVER

- Calculate site surface cover and reduce or redistribute where possible

IMPROVE WATER QUALITY

- Further investigate *E. coli* sources within drainage
- Create artificial wetland to improve drainage

ADDRESS BANK EROSION

- Improve erosion along the bluffs using bioengineering and/or traditional slope stabilization methods

RARE BEACH ANNUALS

INTACT FOREST

PLANTATION PINE STAND

LOW ECOLOGICAL VALUE FOREST PATCH

EARLY SUCCESSIONAL FOREST

Thayer Commons

Hannaford

Ethan Allen Shopping Center

North Ave

Leddy Park Rd

Lake Champlain

MANAGE HAZARDS

- Reduce runoff and add containment to fueling station
- Investigate parking lot cap

MINIMIZE DOG WASTE

- Provide additional signage and trash/recycling receptacles throughout park to improve plant health

Leddy Park Comprehensive Plan

Site Ecology Analysis

June 2, 2022

Legend

- Stream
- Stormwater Facility
- Social Trail
- Future Stormwater Facility

Contour Interval = 2'




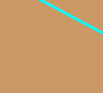
SCALE (ft)
0 50 100 150 200

Prepared by:


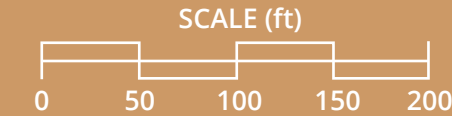
SE GROUP

BURLINGTON
PARKS
RECREATION
WATERFRONT


Legend

 Vehicle Access	 Beach Access
 Informal Access	 Formal Access
 Social Trail	 Streams

Contour Interval = 2'

SCALE (ft)
0 50 100 150 200

Prepared by:


IMPROVE PARKING LOT CIRCULATION & AESTHETICS

- Assess potential lighting, tree islands, landscaping, walkways, and designated bike access within the parking lot

CLOSE ONE SECTION OF ROADWAY

- Address confusing access loop by designing a two-way entry road

UPGRADE EXISTING ACCESS

- Redesign access node and arrival experience from shopping center

FORMALIZE TRAIL SYSTEM

- Assess existing trail network and formalize a simplified system
- Design trail loop to meet Universal Access guidelines

INCREASE ACCESSIBILITY TO WATERFRONT

- Further evaluate existing ADA access to the beach and improve to include Universal Design principles

DESIGN PARK GATEWAY

- Enhance gateway features, signage, and arrival experience from North Ave for all modes

DEFINE PEDESTRIAN ACCESS TO ICE RINK

- Address visitor confusion by clarifying pedestrian access to the arena

INCREASE ROAD SAFETY

- Address pedestrian safety by adding raised crossings and/or rapid flashing beacons

FORMALIZE BEACH ACCESS

- Clarify and formalize beach access to decrease erosion and ecological impacts

ASSESS MUNICIPAL USES

- Evaluate parking lot use by city departments and redesign main parking with this use in mind

ADDRESS PARKING LIMITATIONS

- Assess parking needs and use patterns to determine if additional parking or redistribution of parking is necessary



ADD EVENT SPACE & AMENITIES

- Expand use of existing event space and consider adding additional amenities

INTRODUCE ADDITIONAL AMENITIES & FACILITIES

- Address need for additional restrooms, play area(s), and pavilion(s)

INTRODUCE GATHERING AREAS

- Learn about existing gathering areas used by the community for reflection and connection and create intentional spaces

EXTEND FIELD USE

- Consider lighting rec fields and sports courts to alleviate high demand.

ADD AMENITIES AT FIELDS

- Address increasing field demand and add additional support amenities including a pavilion, restrooms, and/or an additional field

ADDRESS SHADE ISSUES AT BASKETBALL COURT

- Analyze best approach to mitigate shade and pine needle cover by releasing pines or reconsidering court location

CONSIDER SPACES FOR DOGS

- Assess potential locations for off-leash dog areas in the park and on the beach

PRESERVE NATURAL CHARACTER OF THE BEACH FRONT

- Address erosion and drainage to preserve the natural, undeveloped beach front character

PROVIDE BIKING OPPORTUNITIES

- Create a bike park with variety of features and support amenities in response to community feedback

PROVIDE PLAY OPPORTUNITIES

- Reintroduce play area(s) in the form of nature play and/or traditional play to replace previous playground

UPGRADE AMENITIES BUILDING(S) & LOCATION

- Respond to demand for additional restrooms and storage space

OUTDOOR
EVENT SPACE

ICE
ARENA

SOFTBALL
FIELD

REC FIELDS

SPORTS COURTS

Thayer Commons

Hannaford

Ethan Allen
Shopping Center

Leddy Park Rd

North Ave

BEACH

Lake Champlain

Leddy Park Comprehensive Plan Site Recreation & Wellness Analysis

June 2, 2022

Legend

Stream

Contour Interval = 2'

SCALE (ft)
0 50 100 150 200

Prepared by:
SE GROUP

**BURLINGTON
PARKS
RECREATION
WATERFRONT**

ECOLOGY Concepts

Two Ecology concepts emerged based on thorough inventory of **Existing Ecological Conditions** in Leddy Park. The concepts work to enhance the existing ecology at Leddy Park while addressing compromised water, soil, and ecological health.

Both concepts preserve high-value plant communities, increase biodiversity, improve water quality, and mitigate erosion.
In both concepts, where canopy reduction is suggested, it will be balanced with planting new trees that increase biodiversity.

Existing Conditions

- 52 acres of tree canopy, including monoculture pine stands
- 14% impervious surface
- 7 acres dedicated to recreation (fields and courts)
- 1,500 linear feet of beach access
- 2 outfalls to be updated
- 1 existing bioretention facility
- 1 planned bioretention facility

Leddy Park currently has a thick tree canopy. While providing benefits, the canopy limits light and understory growth. There is a significant amount of contiguous paved surfaces at the main parking lot, as well as erosion, and drainage concerns.



Revive Concept

- Nodes of meadow and open spaces throughout the park
- Increase biodiversity with native species patches
- Minor reductions to impervious surface at the main parking lot
- Invite human engagement with natural system restoration
- Restore both drainage channels

The **Revive** concept focuses on light touches to enhance the natural environment at Leddy Park. Key concepts include reducing impervious surface at the main parking lot, introducing native species patches, and teaching people about the natural systems at Leddy Park by inviting them to witness restoration practices.



Regenerate Concept

- Introduce a “Green Ribbon” of open space drawing visitors through the park
- Increase biodiversity with a native species corridor planted over time
- Major reductions to impervious surface at the main parking lot
- Intentional barriers that limit human access in sensitive areas
- Restore both drainage channels

The **Regenerate** concept prioritizes and restores the natural environment at Leddy Park. Key concepts include major reductions to impervious surfaces at the main parking lot, maximizing biodiversity by introducing a native species corridor in stages over time, and limiting human access in sensitive areas.



ECOLOGY Concepts - Feedback

WHICH ELEMENTS ARE YOU MOST INTERESTED IN INTRODUCING AT LEDDY PARK?
PLACE ONE DOT IN THE APPROPRIATE BOX.

Introduce nodes of open space throughout the park

OR

Introduce a swath of open space through the park

Slowly open the tree canopy in selective patches to introduce native species

OR

Quickly and significantly open the tree canopy along a corridor and introduce native species

Explore opportunity for beach ecology restoration at Leddy Park

OR

Explore opportunity for beach ecology restoration elsewhere

Invite people to observe natural system restoration efforts

OR

Limit human access to sensitive restoration areas

PLACE ONE DOT IN THE APPROPRIATE BOX.

I PREFER THE *REVIVE* CONCEPT

I PREFER THE *REGENERATE* CONCEPT

I PREFER *BOTH* CONCEPTS

I PREFER THE *EXISTING CONDITIONS*

What other comments, questions, or concerns do you have about the existing ecology at Leddy Park or the ecology concepts you have seen today?

ACCESS & CONNECTIVITY Concepts

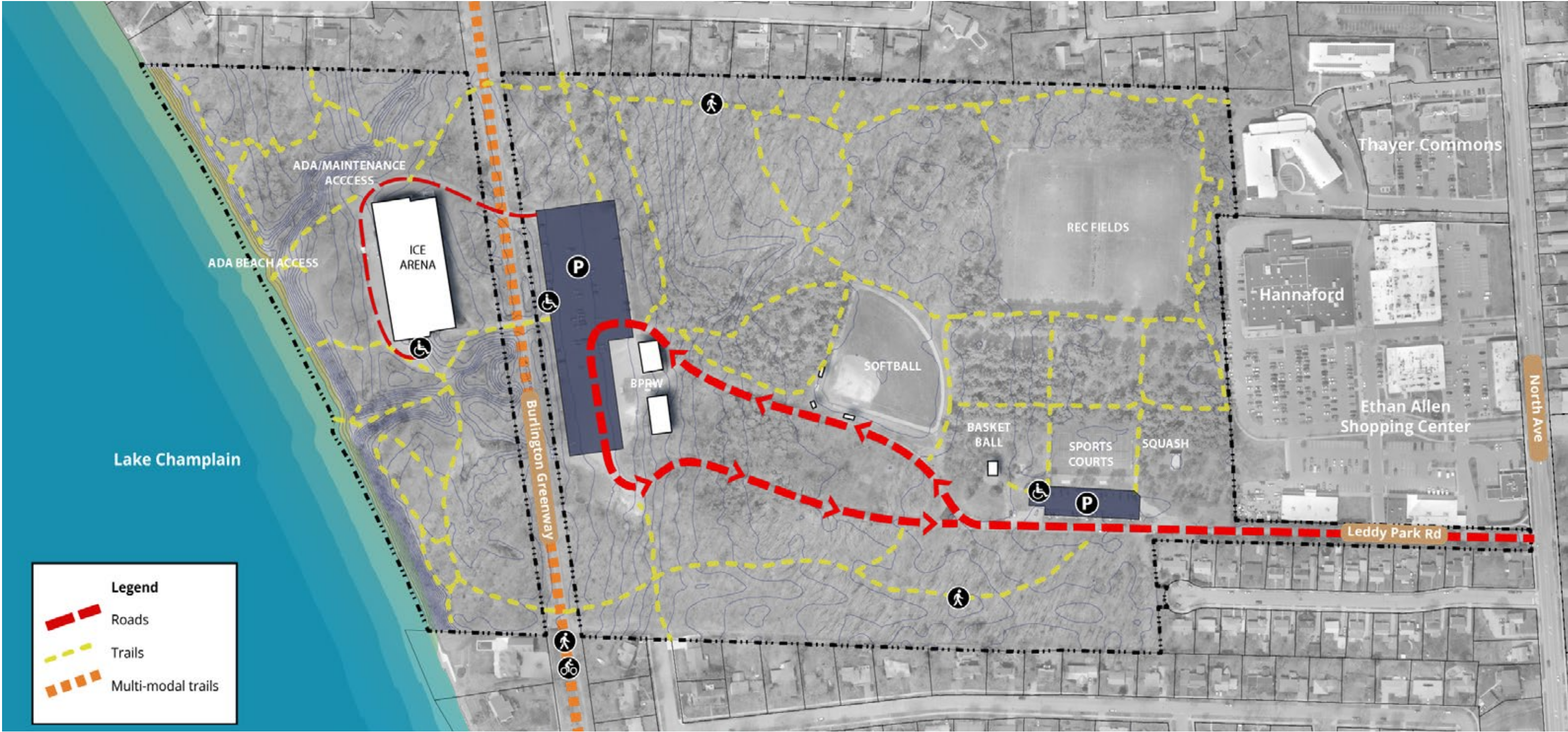
Two Access & Connectivity concepts emerged based on thorough inventory of **Existing Access & Connectivity Conditions** in Leddy Park. The concepts address site circulation challenges for all modes of travel, improving universal access, and parking and arrival within Leddy Park.

Both concepts incorporate universal access (including to the beach), a two-way access road, improved wayfinding, and enhanced gateways.

Existing Conditions

- ~315 existing parking stalls mostly located in the main lot at the ice arena
- No formal drop-off locations
- No universal access trails

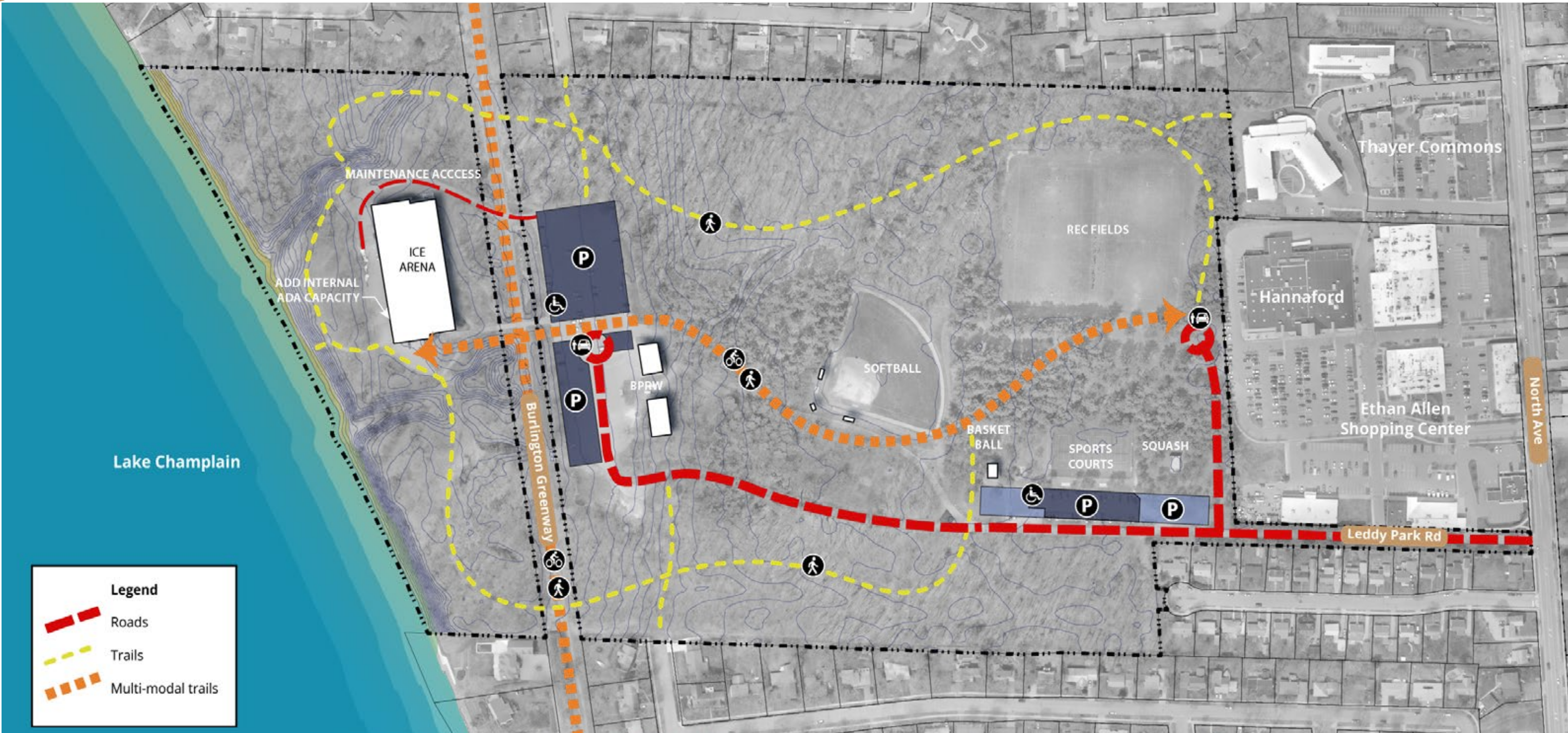
Accessing and moving through Leddy Park currently can be a confusing experience due to the lack of arrival nodes, unbalanced parking, a network of informal social trails, and a lack of universal access.



Connect

- Create two-way entry road using south leg of existing entry loop
- Add formal drop-off at rec fields and at ice arena
- Expand existing parking near courts
- Add a multi-modal east-west trail connecting beach to plaza
- Introduce a universal access perimeter pedestrian trail
- Add an accessible lift inside the ice arena

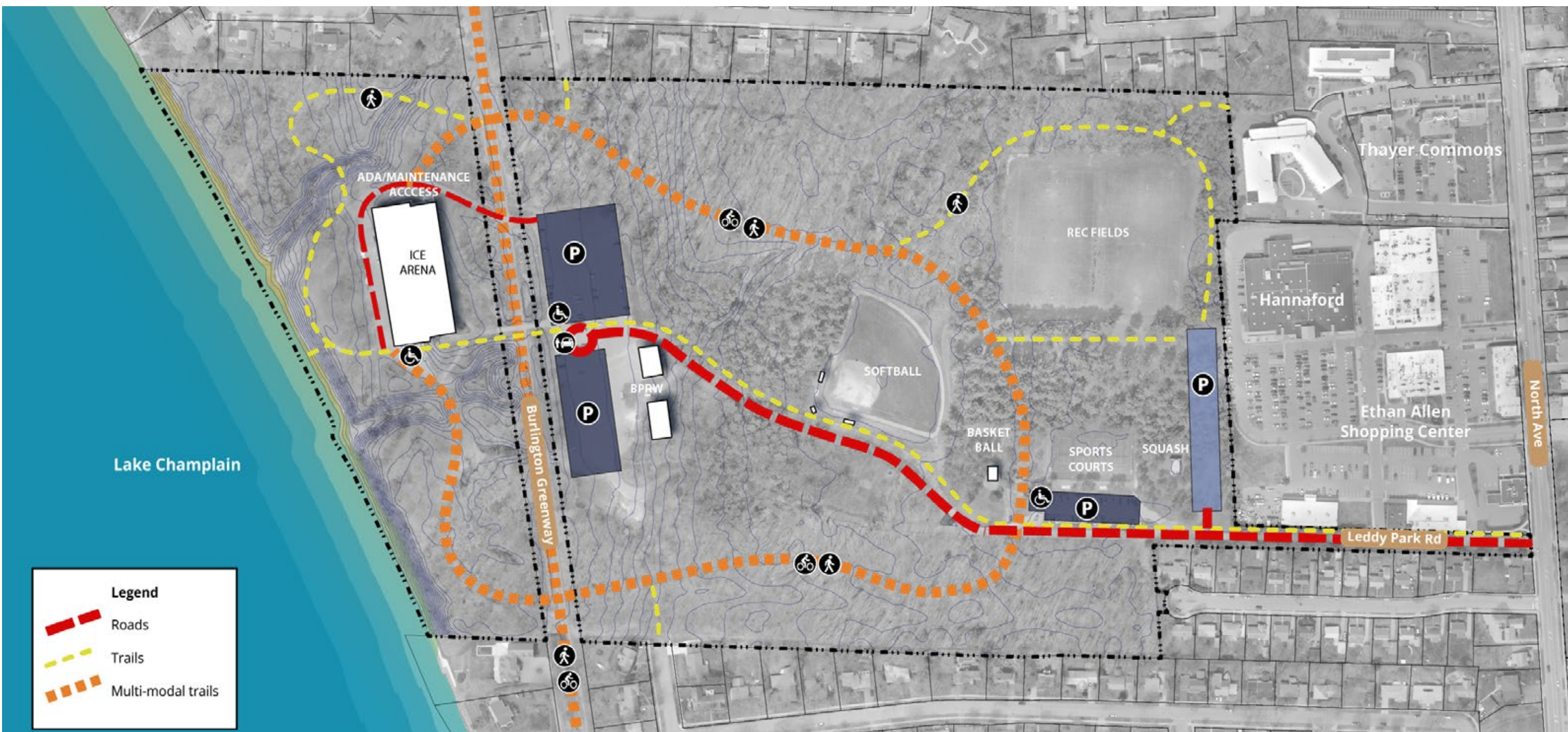
The **Connect** concept centers on an east-west connection linking the beach to the shopping plaza and North Ave, introduces two formal drop-off locations within the park, expanded parking at the sports courts, and defining a perimeter trail.



Loop

- Create two-way entry road using north leg of existing entry loop
- Formal drop-off at ice arena
- Add new parking lot near rec fields
- Introduce a multi-modal interior loop connecting park destinations
- Add pedestrian side trails off main loop

The **Loop** concept centers on an interior access loop linking major destinations within the park, a single formal drop-off, a new parking area near the rec fields, and pedestrian side trails.



ACCESS & CONNECTIVITY Concepts - Feedback

WHICH ELEMENTS ARE YOU MOST INTERESTED IN INTRODUCING AT LEDDY PARK?
PLACE ONE DOT IN THE APPROPRIATE BOX.

Create two-way entry road using north leg of existing entry loop	OR	Create two-way entry road using south leg of existing entry loop	OR	Expand existing parking lot near the sports courts	OR	Add a new parking lot near the rec fields
Introduce a multi-modal east-west trail connecting the beach to the plaza	OR	Introduce a multi-modal loop connecting park destinations	OR	Add a formal drop-off at the ice arena	OR	Add a formal drop off at the rec fields and the ice arena

PLACE ONE DOT IN THE APPROPRIATE BOX.

I PREFER THE <i>CONNECT</i> CONCEPT	I PREFER THE <i>LOOP</i> CONCEPT	I PREFER <i>BOTH</i> CONCEPTS	I PREFER THE <i>EXISTING</i> CONDITIONS
-------------------------------------	----------------------------------	-------------------------------	---

What other comments, questions, or concerns do you have about the existing access and circulation at Leddy Park or the access and circulation concepts you have seen today?

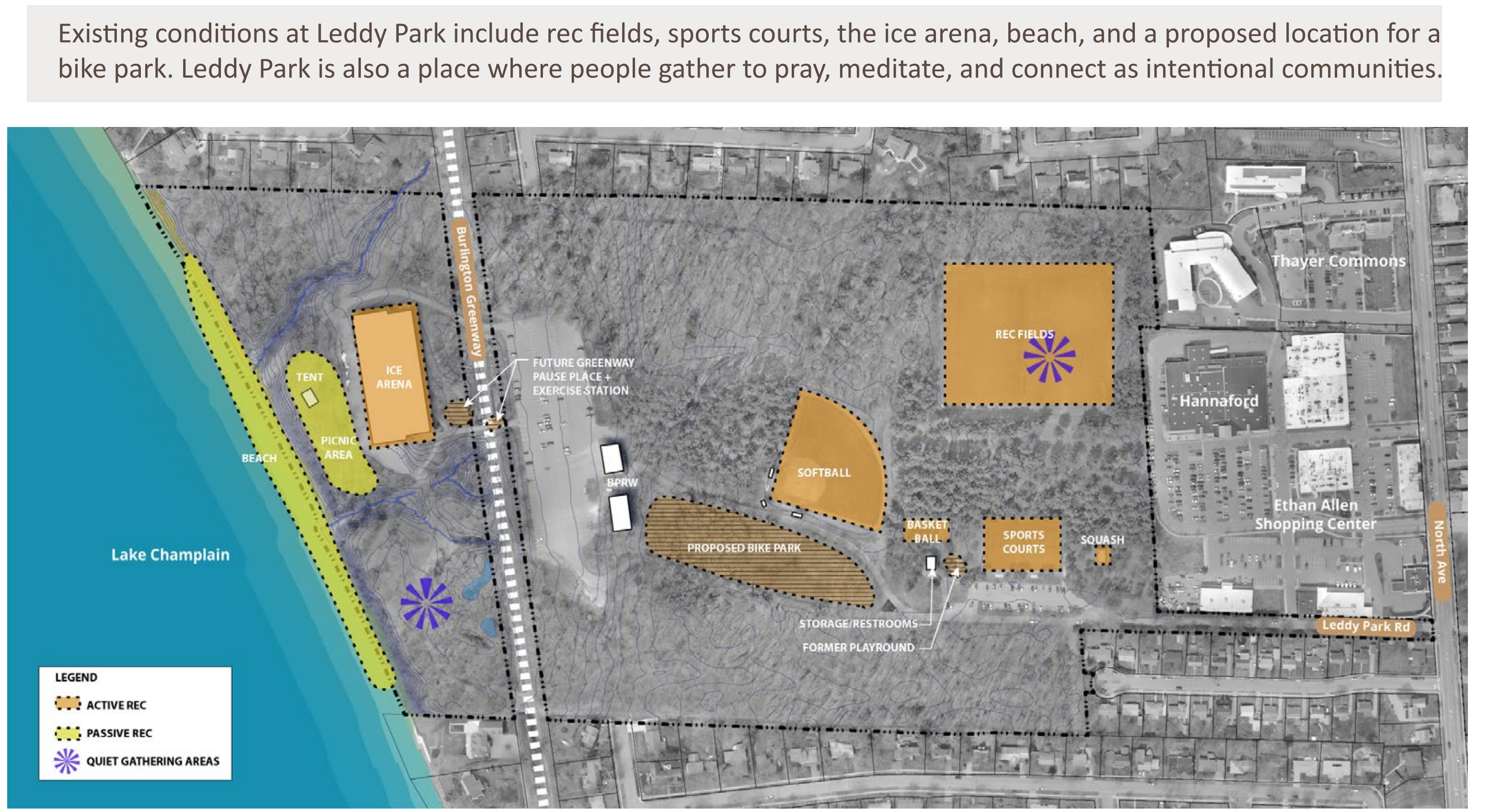
RECREATION & WELLNESS Concepts

Two Recreation & Wellness concepts emerged based on thorough inventory of **Existing Recreation & Wellness Conditions** in Leddy Park. The concepts address expanded recreation potential, and balancing active, passive, and intentional use areas.

Both concepts preserve existing recreation facilities and incorporate a new bike park.

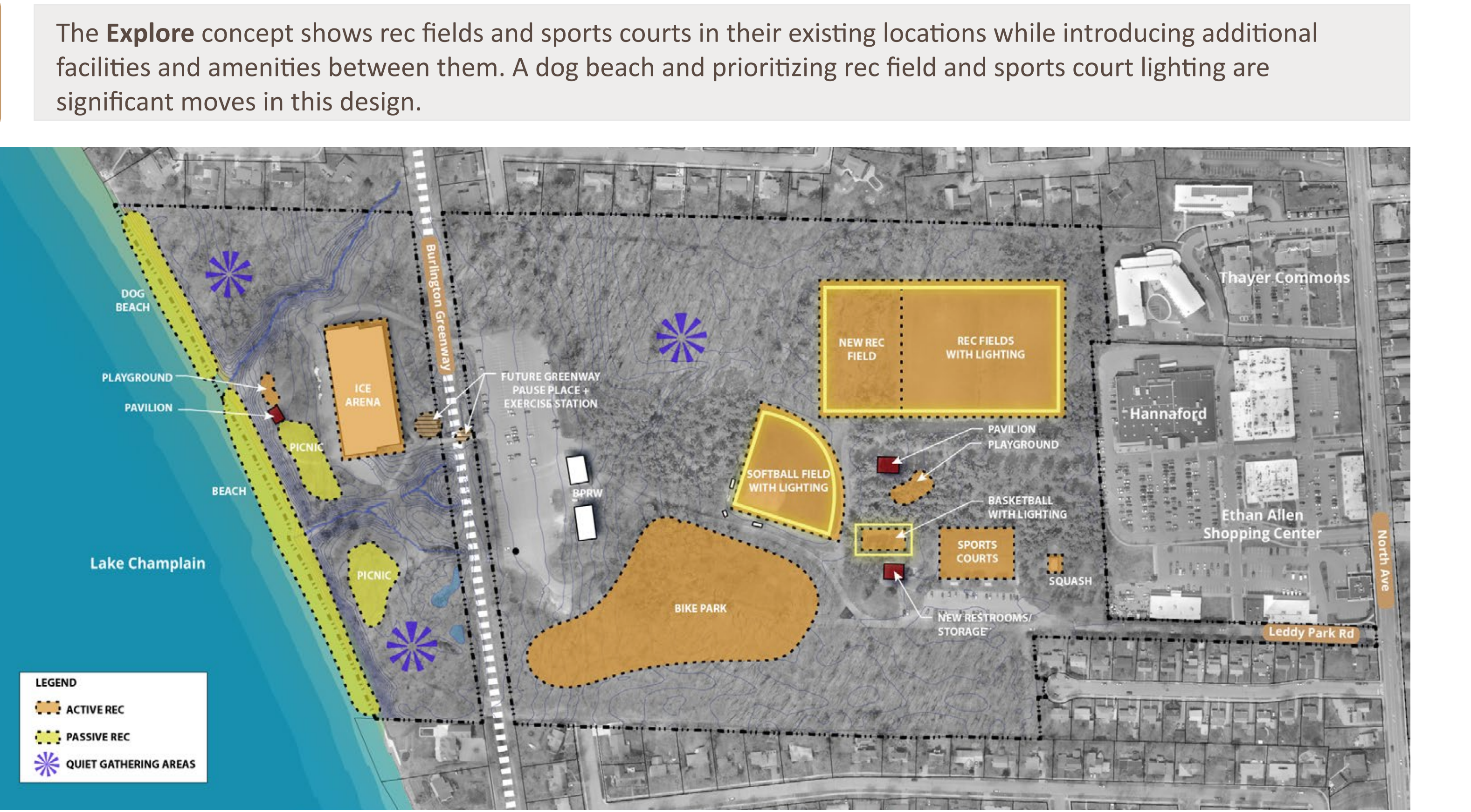
Existing Conditions

- 1 picnic area
- 1 softball field
- 2 rec fields
- 1 basketball court
- 4 sports courts
- 1 squash court
- 1 ice arena
- Multiple gathering areas
- 1 (proposed) bike park



Explore

- Playground, picnic area, and pavilion near ice arena
- Expanded picnic facilities on southern bluff
- Off-leash dog beach
- Bike park
- Play area, restroom, and pavilion near rec fields and sports courts
- Additional rec field to the west of the existing rec fields
- Quiet gathering areas on bluffs and in the forest



Gather

- Picnic area and pavilion near ice arena
- Improved ice arena entry
- Bike park
- Relocate basketball court
- Play area and restroom near courts
- Additional restroom and pavilion near rec fields
- Additional rec field to the south of the existing rec fields
- Quiet gathering areas on bluffs



RECREATION & WELLNESS Concepts - Feedback

WHICH ELEMENTS ARE YOU MOST INTERESTED IN INTRODUCING AT LEDDY PARK?
PLACE ONE DOT IN THE APPROPRIATE BOX.

Introduce an off-leash dog beach at Leddy Park

OR

Do not introduce an off-leash dog beach at Leddy Park

Relocate the basketball court to address shade and pine needle conflicts

OR

Selectively release pine trees to address shade and pine needle conflicts

Prioritize adding lighting to sports courts and rec fields

OR

Prioritize adding other amenities like playgrounds, a pavilion, and restrooms

What age range should the playground accommodate?

2-5 yrs.

5-12yrs.

12+ yrs.

PLACE ONE DOT IN THE APPROPRIATE BOX.

I PREFER THE *EXPLORE* CONCEPT

I PREFER THE *GATHER* CONCEPT

I PREFER *BOTH* CONCEPTS

I PREFER THE *EXISTING* CONDITIONS

What other comments, questions, or concerns do you have about the existing recreation and wellness areas at Leddy Park or the concepts you have seen today?

Quiet Spaces & Gathering Areas at Leddy Park

WHERE WOULD YOU LIKE TO SEE QUIET SPACES AT LEDDY PARK?
PLACE ONE DOT ON THE MAP BELOW.



WHERE WOULD YOU LIKE TO SEE GATHERING AREAS AT LEDDY PARK?
PLACE ONE DOT ON THE MAP BELOW.

