

Welcome!

Leddy Park Comprehensive Plan Public Meeting

This project will follow these planning stages:



ENVISION

We are bringing stakeholders together to determine a vision for a defined problem.



REFINE

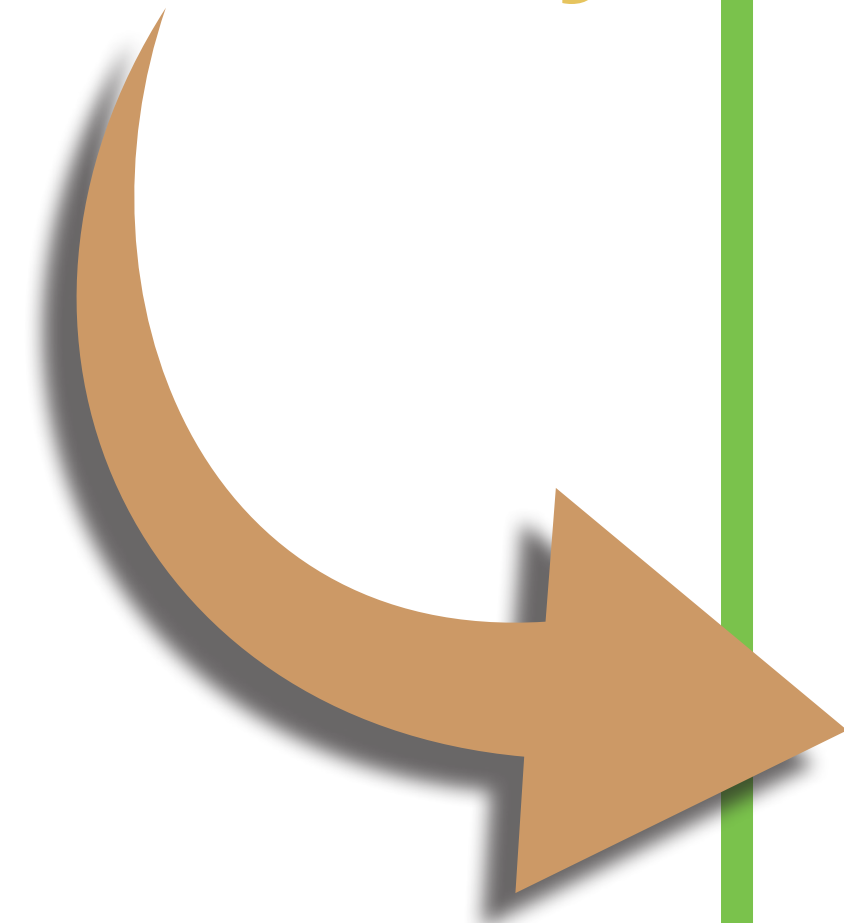
We are engaging the community to help shape a project or idea.



INFORM

We are sharing the process and providing an update on the preferred concept.

We are here today!



STAY IN THE LOOP! <https://EnjoyBurlington.com/Leddy-Park-Comprehensive-Plan/>

Leddy Park | Comprehensive Plan

Public Open House #2 • Burlington, VT • June 2023

Project Mission

To enhance the character of Leddy Park and make it a welcoming park for all by balancing social needs, recreation opportunities, and ecological enhancement.

Project Goals & Objectives

Connect diverse uses at Leddy Park

- Improve universal access throughout the park and to the beach
- Formalize and improve the existing trail system
- Provide safe bike and pedestrian connections between North Ave, Leddy Park, Leddy Beach, and the Burlington Greenway

Identify opportunities for environmental resource management

- Apply climate mitigation strategies recognized by The City, including land stewardship, education, and partnerships with First Nations People
- Reduce environmental impacts caused by impervious surfaces
- Mitigate site erosion, improve water quality, and recharge groundwater

Determine what infrastructure is needed to support visitors

- Evaluate use of existing park facilities and need for expanded recreation opportunities
- Identify opportunities that best support events and programming
- Assess parking area capacity and identify opportunities to increase safety and security, and generate revenue

Key

- 1 Leddy Beach (1,500 lf)
- 2 Gordon H. Paquette Ice Arena (1,326 max. building occupancy)
- 3 Maintenance Buildings
- 4 Softball Field (1 total)
- 5 Basketball Court (1 total)
- 6 Seasonal Restroom
- 7 Tennis Courts (4 total)
- 8 Squash Court (1 total)
- 9 Athletic Fields (2 total)
- 10 Arena Parking Area (269 stalls)
- 11 Small Parking Area (52 stalls)
- 12 Year-Round Restroom Access
- 13 Beach Access - Stairs
- 14 Beach Access - Ravine Path
- 15 Beach Access - North Path



Leddy Park Comprehensive Plan

Existing Conditions
Size: 65 Acres

Legend

- Water Lines
- Streams
- Formal Park Access
- Informal Park Access
- Overhead Electric
- Buried Electric
- Stormwater Treatment
- Trail

Contour Interval = 2'
N
SCALE (ft)
0 100 200 300 400

Prepared by:
SE GROUP



Leddy Park Comprehensive Plan

Ecological Communities Site Analysis

Contour Interval = 2'
SCALE (ft)
0 50 100 150 200

Prepared by:
SE GROUP



Legend

- Existing Stream
- High Conservation Boundary (~33 acres)
- Low Conservation Boundary (~33 acres)

Contour Interval = 2'

SCALE (ft)

Prepared by:

THROUGHOUT LEDDY PARK

- Informal trails fracture habitat, impact high-priority conservation plant communities, increase invasive species migration, and cause erosion
- Invasive species including poison ivy, buckthorn, nightshade, and bittersweet, etc. compete with native species
- Prevalence of dog waste impacts ecological health and water quality
- High water table with sand over clay soil profile impedes water infiltration and contributes to active groundwater seeps
- Total impervious surface = 14% (calculated in 2013)

• Large (~15,000 sf) parking lot with limited stormwater infrastructure

• Historical site use as a rendering plant indicates soils under parking lot are likely contaminated

• No DEC records for area beyond maintenance buildings.

• Large incised gully with eroded and unstable banks caused by groundwater seeps and stormwater runoff

• Active down-cutting along gully discharges sediment into lake

• Occasional elevated levels of E. coli in gully drainage

Lake Champlain

• Surface water runoff along impervious beach access path discharges sediment into the lake

• Excessive impervious surface area behind arena

• Large gully (~20' deep) caused by erosion through alluvial sand to clay layer beneath

• Caused by untreated stormwater runoff and groundwater seeps

• Existing outfall is unsightly, hazardous, and located at a popular entry to Leddy Beach

• Groundwater seep along beach access path indicates potential break in pipe

• Path erosion from heavy pedestrian traffic and water runoff

• Rare beach plants and invertebrates impacted by beach raking, informal trails, and high summer use

• Existing fueling station does not have a canopy or spill prevention pavement ridging

• One-way paved access roads contribute to site impervious calculations

• Mowing of understory as lawns contributes to maintenance costs, emissions and impacts habitat and plant health

ICE ARENA

BPRW MAINTENANCE

Hannaford

Ethan Allen Shopping Center

Burlington Greenway

North Ave

Leddy Park Rd

Legend

- Existing Stream
- Existing Stormwater Treatment
- Drainage Area of Concern
- High Conservation Priority (~33 acres)
- Paved Surface
- Existing Trails
- Future Stormwater Treatment
- Steep & Eroding Sandy Bluffs
- Low Conservation Priority (~33 acres)

• 269 spaces in arena lot
 • Existing lot design does not accommodate ped/bike circulation and is not easily navigated by vehicles
 • Inadequate lighting at night
 • Fire Department training in arena lot with high volume water runoff

THROUGHOUT LEDDY PARK

- Limited wayfinding and signage
- Existing beach access and trail network is not universally accessible
- Drainage and erosion concerns along various trails including high use trail from Thayer Commons
- No clear and safe bike/ped connection to North Ave. from the Greenway or Leddy Beach
- Complaints from neighbors about vehicles racing along access drive and in arena parking lot
- Lacking drop-off areas for passengers and equipment

• 52 parking spaces regularly over capacity during summer and fall field and court use

• Vehicular crossing at Greenway for maintenance and ADA access to arena

• Vehicular circulation serving ADA parking, maintenance entry, service, and fire access

• Unclear pedestrian access and circulation from parking lot to arena primary and secondary entries

• 3 ADA parking spaces enter at rink level
 • Arena lacks internal ADA circulation between levels
 • Arena entries to restroom and snack bar at rink level

• Arena trash and recycling dumpster location requires large truck access

• Parking kiosks installed and in use, starting Memorial Day 2023

• Maintenance area access, parking, fueling station, and planted island

• Lacking gateway treatment and park arrival experience
 • Entry signage not clear from North Ave.
 • Zoning variance necessary to improve
 • Challenging access for cyclists, pedestrians, and people using mobility devices

Lake Champlain

• South exit road in great condition, could serve 2-way traffic
 • Lacking gravel shoulders and fog lines, and has steep grade change between roadway and existing grade
 • Less expensive to convert than north access road

• North access road in good condition, could serve 2-way traffic
 • Lacking gravel shoulders and fog lines, and has steep grade change between roadway and existing grade
 • Sharp corner at maintenance building where road enters parking lot

• Traffic arm location

• ~350' of sidewalk along access road before connecting to informal entry at shopping center
 • Existing mature trees on both sides of access road
 • Overhead utility lines along entry
 • Cyclists travel with vehicles on Leddy Park Rd. to connect to North Ave. without sharrow or signage
 • Confusing circulation at transition from 2-way to 1-way traffic

Legend

	Existing Stream		Existing Trails
	1-Way Vehicular Circulation		Beach Access Trails
	2-Way Vehicular Circulation		Beach Access Stairs
	Formal Park Access		Sidewalk
	Informal Park Access		Overhead Electric
	Arena Primary Entry		Arena Secondary Entry
			Arena Maintenance Entry



THROUGHOUT LEDDY PARK

- ~7 acres dedicated to recreation (fields and courts)
- Additional restrooms and year-round access demand
- Community excitement about new bike park
- Desire to balance needs of dog owners and those who want to restrict dogs: off-leash prevalence, beach use, impacts to wildlife and ecology, and waste management
- No existing educational site signage (park history, natural and social systems, etc.)
- Concerns about noise and partying at night

- High field demand during soccer and lacrosse seasons
- Pavilion wanted to shelter park guests and belongings
- Space used by community as place of prayer and ceremony
- No existing field lighting

- 1 softball field (undersized)
- High seasonal demand by high school teams
- High water table and sand over clay soil profile leads to field drainage challenges
- No existing field lighting

- High trail use year-round
- No formal trail system

- 1 story walk in collaboration with local library

- High annual use of ice rink
- Signage needed for arena amenities that serve the park (year-round restrooms and snack bar)

- High seasonal use of outdoor event space
- Pavilion wanted to support events like Beach Bites to replace seasonal tent

- Squash court (1) in disrepair

- High beach use during summer months by people and dogs

- Sacred space of Abenaki People - where land and water meet
- Identified as a favorite natural area among park users

- Greenway Pause Place to include bike parking, fix-it station, outdoor exercise equipment, trash/recycling, and beach access

- 1 basketball court
- Pine needles and shade cause wet and dirty court conditions

- Seasonal restrooms
- Portable restrooms used to extend seasonal access

- Previous playground location

- 4 tennis/pickleball courts
- Lights operable until 10pm

Legend

- Existing Stream
- Existing Trails



Lake Champlain

North Ave

Leddy Park Rd

Burlington Greenway

Thayer Commons

Hannaford

Ethan Allen Shopping Center

ICE ARENA

Event Space & Picnic Area

BPRW MAINTENANCE

Softball Field

Athletic Fields

Courts

Leddy Beach

2022 Stakeholder & Community Input

Stakeholder and community outreach has revealed demand for the following park features, amenities, and general feedback about Leddy Park.

Ecology

- Keep bike park out of mature forest area. Build in early succession forest area
- Do not remove big trees or native wildflower areas
- Flower garden with benches
- Clean up beach - make look like North Beach (sand)
- Know what you have here! A beautiful, natural park! Don't urbanize it! Leave all trails alone please. Don't need pavilions and hang outs
- Why does 'regenerate' concept clear so many mature trees?
- Permeable parking lot
- Remove invasive plants and encourage native plants
- Educate users about health of lake and what we can do
- Screen "no Other Lake"
- Like 'Green Ribbon' native species concept
- Barriers to prevent people going up and down bluffs
- Add ways people can participate in restoration efforts
- Only open nodes in early successional areas
- Don't want to cut trees for parking
- Concerns about ecological impacts of some proposed design elements
- Like the natural feel of the park

Access & Connectivity

- Using north leg as entry would keep southern forest intact
- Don't like 2-way exit/entry road
- Need pedestrian access behind hardware store
- Additional park access at Leonard Street
- Limit large group gathering spaces
- Picnic pavilion
- Soft-surface trails
- Do not mess with natural trails. Trails at Arms have been urbanized - like walking on bubble wrap.
- Sidewalk all the way to park/playground
- ADA access (mobility scooters) to park/playground
- ADA access to beach
- Place to secure wheelchair/mobility scooters
- Lockers for beach users
- Multi-modal loop reduces walking options
- Patrol park at midnight
- Road is too narrow for two lanes and bicycles
- EV chargers in parking lots
- Concerns about beach fires
- Concerns about bikes in the park
- Desire for pavilion/community structure
- More than 1 restroom needed
- Dog park, dog waste stations, off-leash dog area

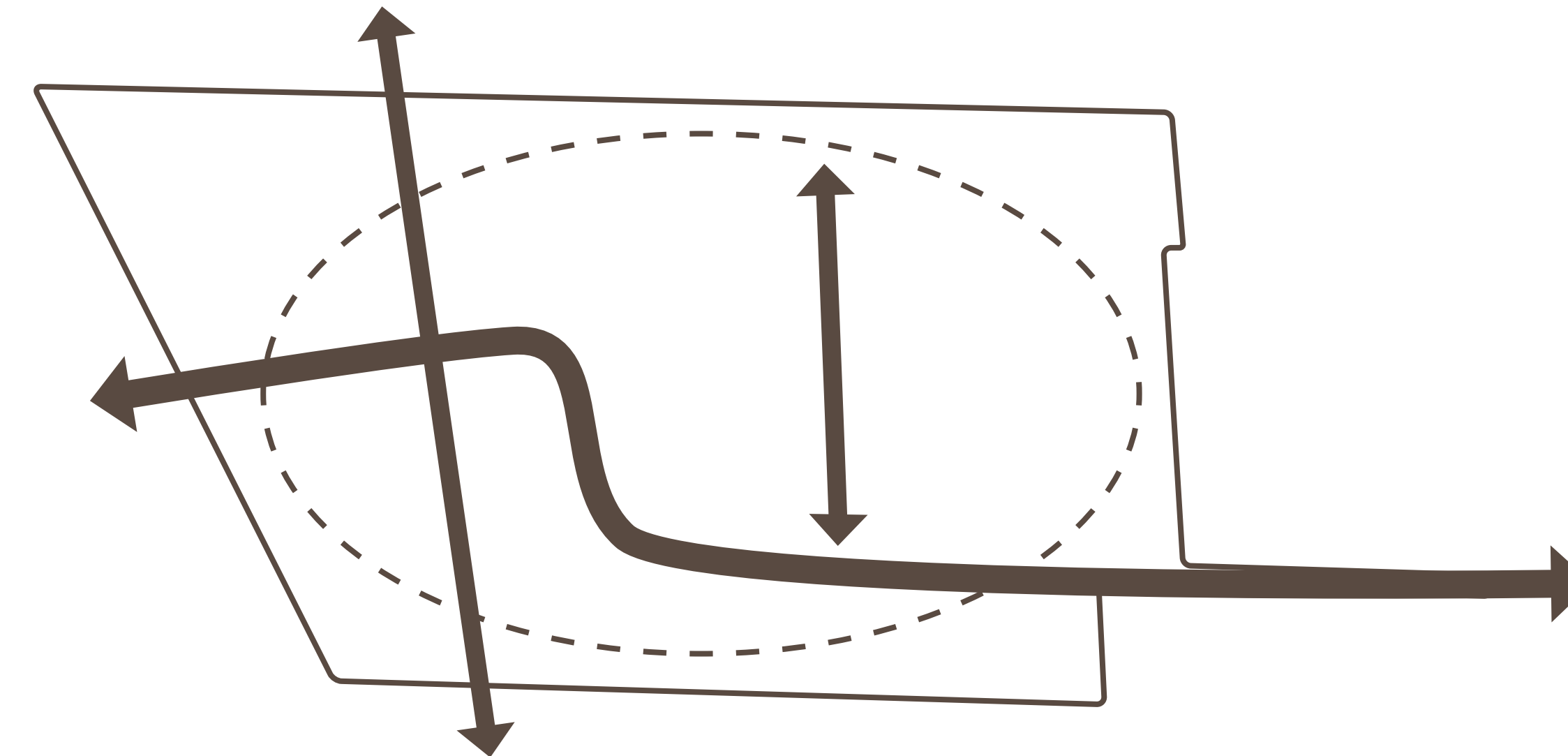
Recreation & Wellness

- Athletic field expansion and lighting
- Pickleball courts
- More tennis courts
- Pickleball courts
- Covered basketball court
- Agree with high field usage
- LOVE the bike park. Please keep pump track and kid friendly features
- Nature play and playground
- No lights please
- Explore trauma informed practices (i.e. many groups uncomfortable w/ unleashed dogs)
- Picnic area near tennis courts
- Outdoor pool
- Ice skating
- Bocce ball court
- Water filtration system
- Adult & kid swings
- Groomed winter XC ski trails
- Softball field improvements
- Expand arena ice rink
- Beach volleyball
- Disc golf
- Watersport rentals
- Food trucks and snack bar
- Benches and seating
- Public art

Concept Design Big Moves

The following three big design moves became clear as we navigated an iterative design process driven by the project mission, site analysis, technical assessment, and feedback from the community and stakeholders.

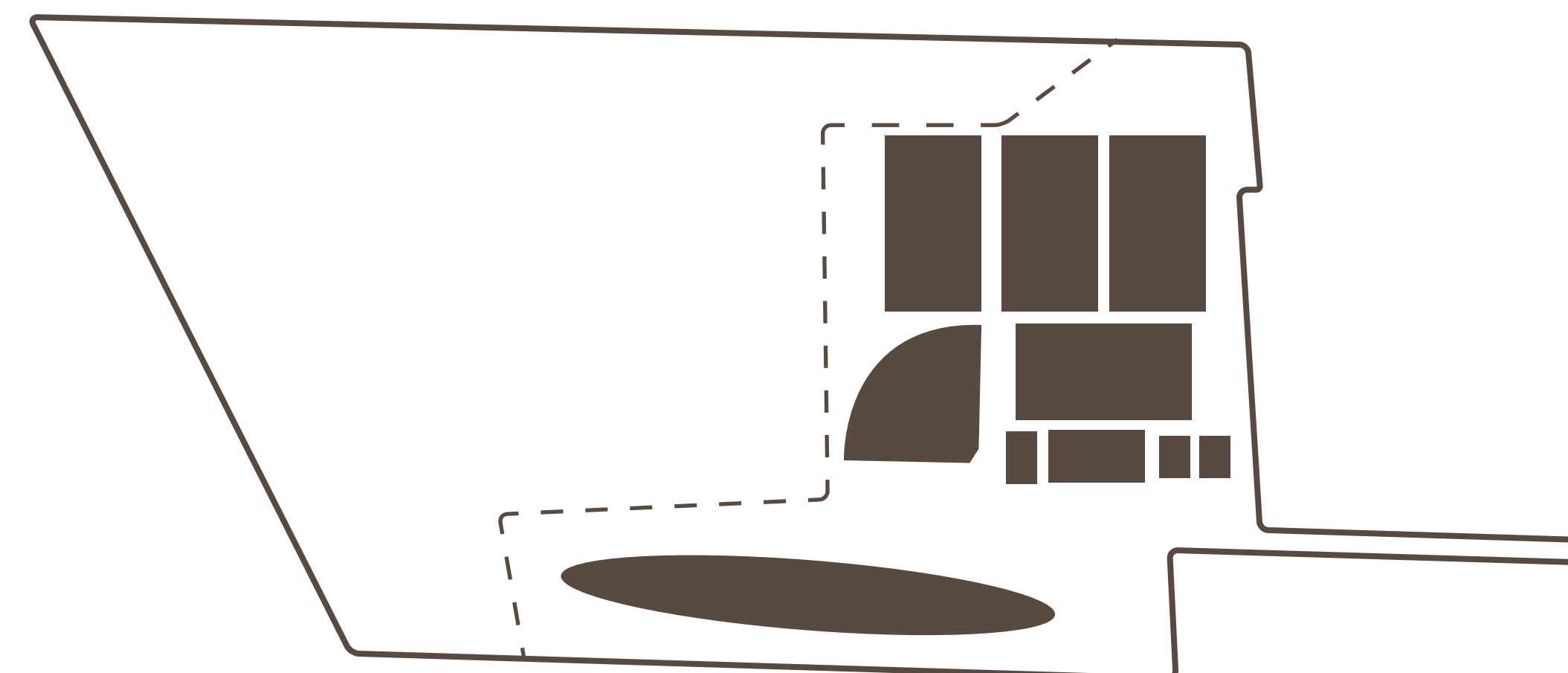
Clarify Circulation



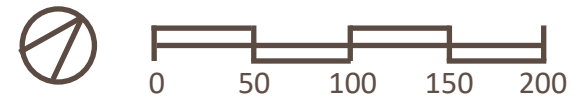
Respect Sensitive Ecology



Maximize Recreation



Concept Design

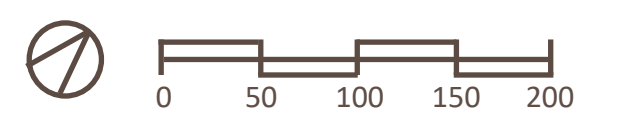
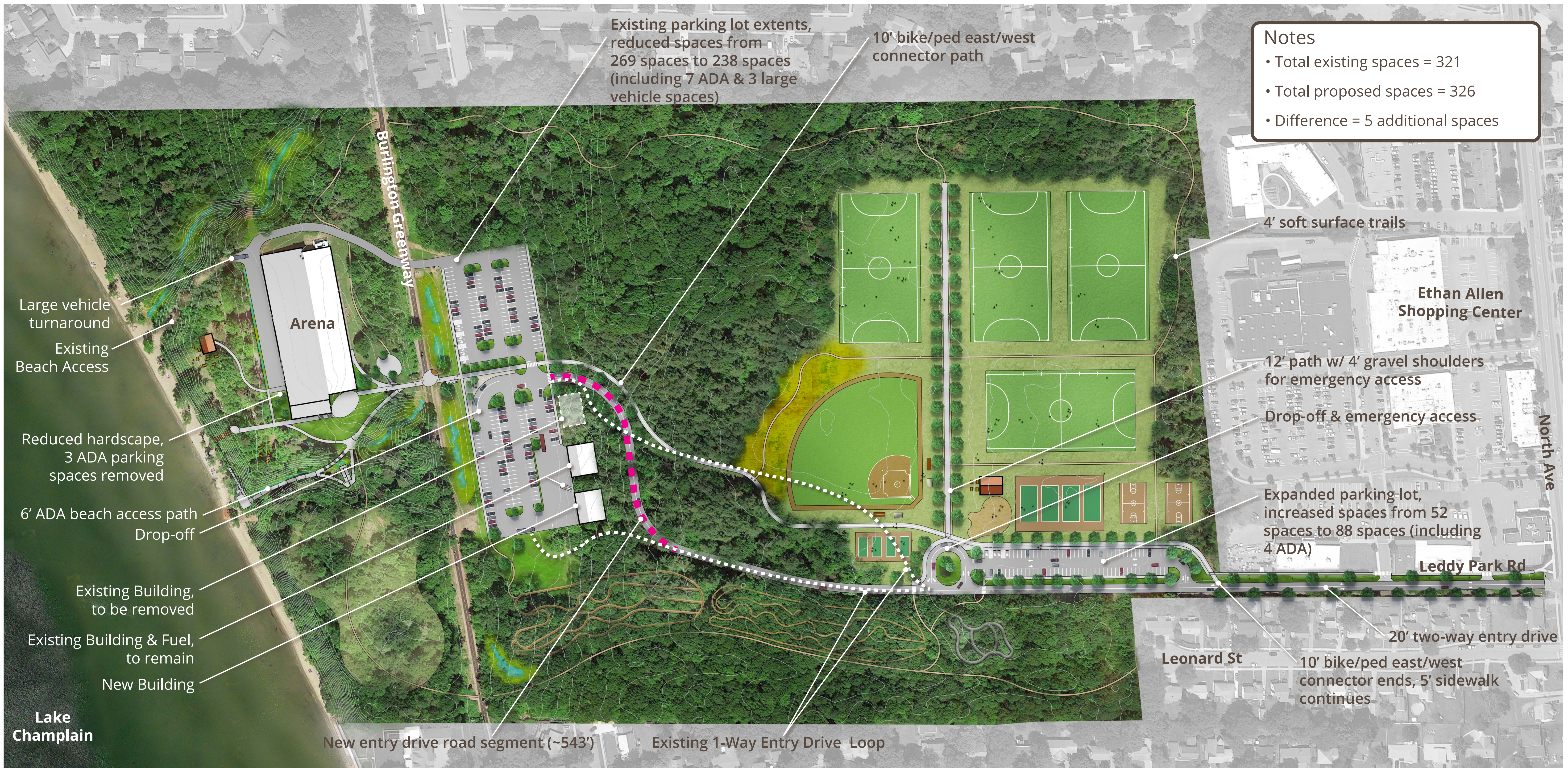


Leddy Park | Comprehensive Plan

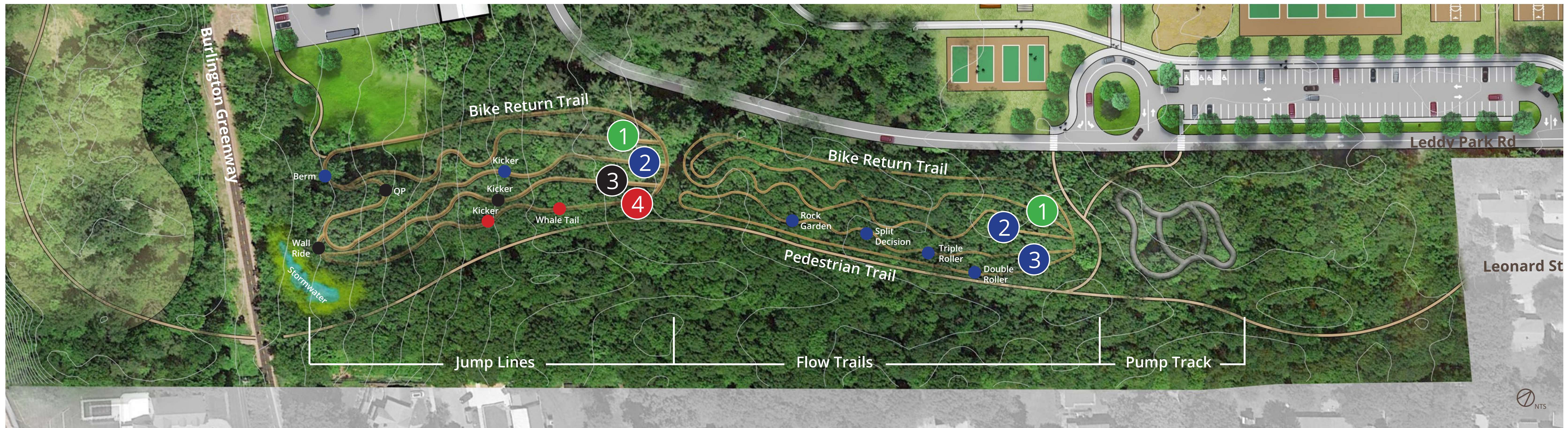
Public Open House #2 • Burlington, VT • June 2023



Concept Design Parking & Circulation



Bike Park Concept Design



Progressive Jump Lines:

- 1** Green (Beginner)
550', natural surface. Includes: drops, table jumps, rollers, berms (no gaps)
- 2** Blue (Intermediate)
780', 10 jumps, 7 pre-engineered kicker ramps, natural surface landings. Includes: table jumps, gap jumps, rollers, berms, hip jumps, wallrides
- 3** Black (Expert)
750', natural surface, 10 gap jumps, 3 dirt to dirt, 7 pre-engineered kicker ramps. Includes: gap jumps, rollers, berms, hip jumps wall rides, quarter pipe.
- 4** Slopestyle (Expert)
820', 7 jumps and or features, 6'-7' kicker ramps, natural surface landings. Includes: gap jumps, hip jumps, elevated features, wallrides, rollers, berms.

Flow Trails:

- 1** Green (Beginner)
600', natural surface flow/pump trail. Includes: rollers, berms, turkey tails.
- 2** Blue (Intermediate)
675', natural surface flow/pump trail. Includes: rollers, berms, table jumps, turkey tails.
- 3** Blue (Intermediate)
1037', natural surface flow/tech trail (sections require pedaling). Focus on balance and line choice. Includes: rollers, berms, table jumps, rock gardens, up and overs, skinny bridges, elevated features, turkey tails.

Asphalt Pump Track:

All Levels
~20,000 square feet, asphalt surface, 4'-6' tall berms

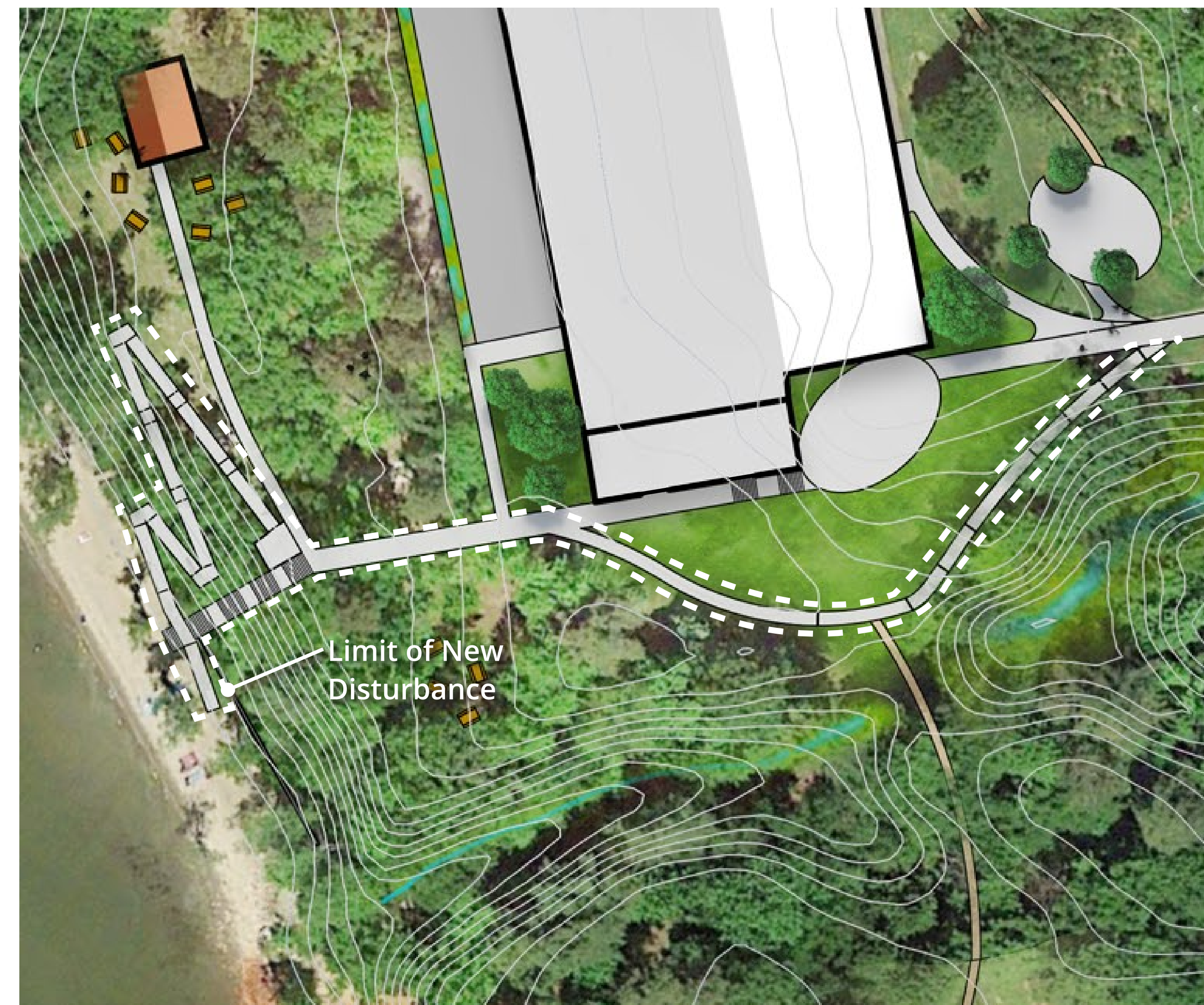
Accessible Beach Access Study

Two ADA beach access designs were studied. One preferred design remains. See below for more.



Study 1 - Preferred Design

- Series of 5% paths and 8% ramps
- Beach access ramp seconds as erosion control
- ~6,000 SF of newly disturbed area
- Estimated cost ~ \$400,000



Study 2

- 8% ramp system from top of bank to beach
- ~13,000 SF of newly disturbed area
- Estimated cost ~ \$500,000

Next Steps

These Leddy Park improvements are already in the works or kicking off this year!

