

# CALAHANAN PARK

# Public Workshop

May 13, 2021







# Agenda

5 Min.

**Design Team and Schedule**

30 Min.

**Work to Date:**

Community Questionnaire

Site History

Circulation

Programming

Stormwater

Ecology and Vegetation

25 Min.

**Breakout Group - Activity**

10 Min.

**Q&A**

# CALAHAN PARK COMMUNITY

## CITY WORKING GROUP



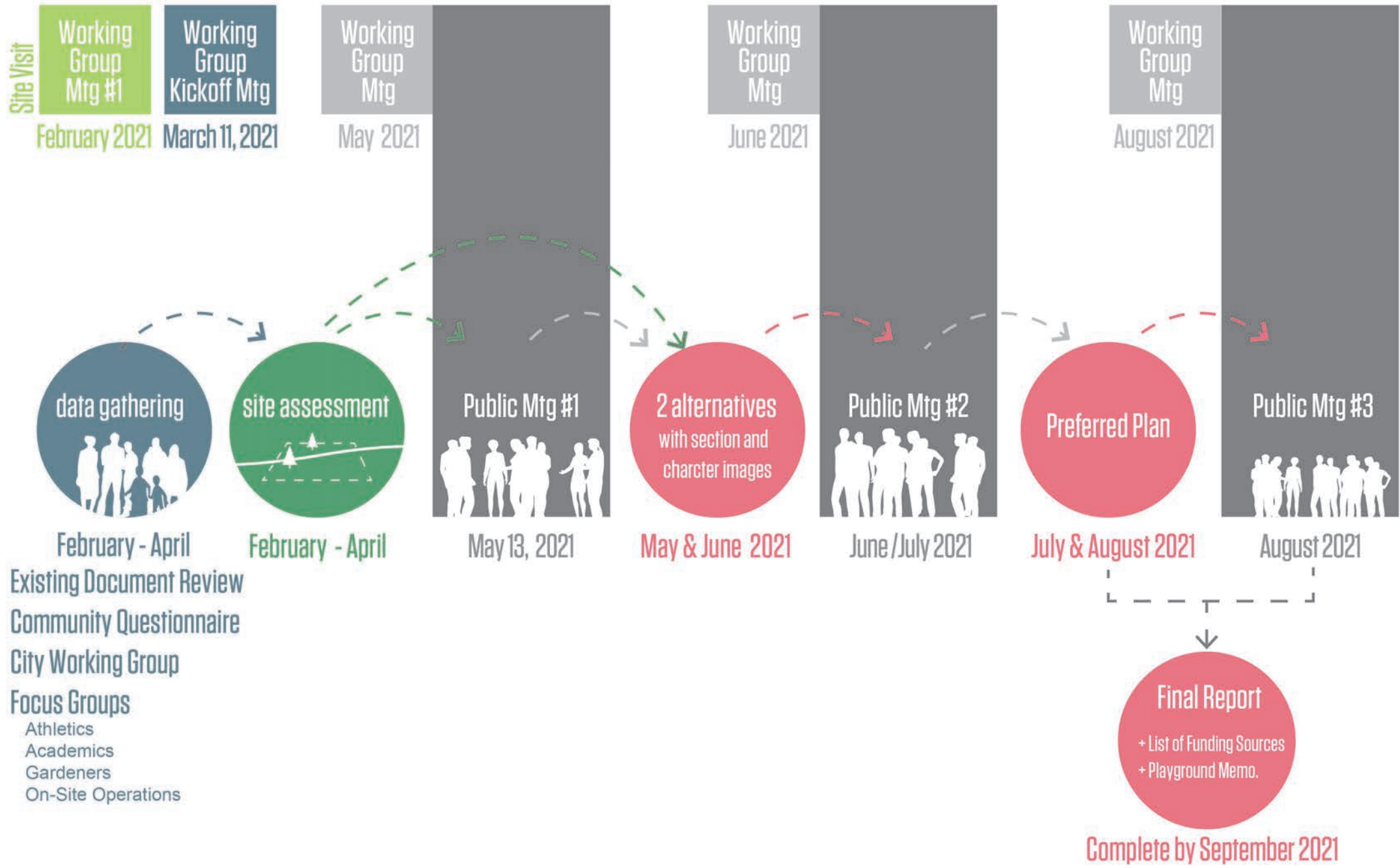
## DESIGN TEAM - PRIME CONSULTANT



## DESIGN TEAM - SUB CONSULTANTS



bi-weekly check-in meetings - - - - ->



- Existing Document Review
- Community Questionnaire
- City Working Group
- Focus Groups
  - Athletics
  - Academics
  - Gardeners
  - On-Site Operations

Complete by September 2021



# COMMUNITY QUESTIONNAIRE



Dad / Architect /  
Design Team Community Liason

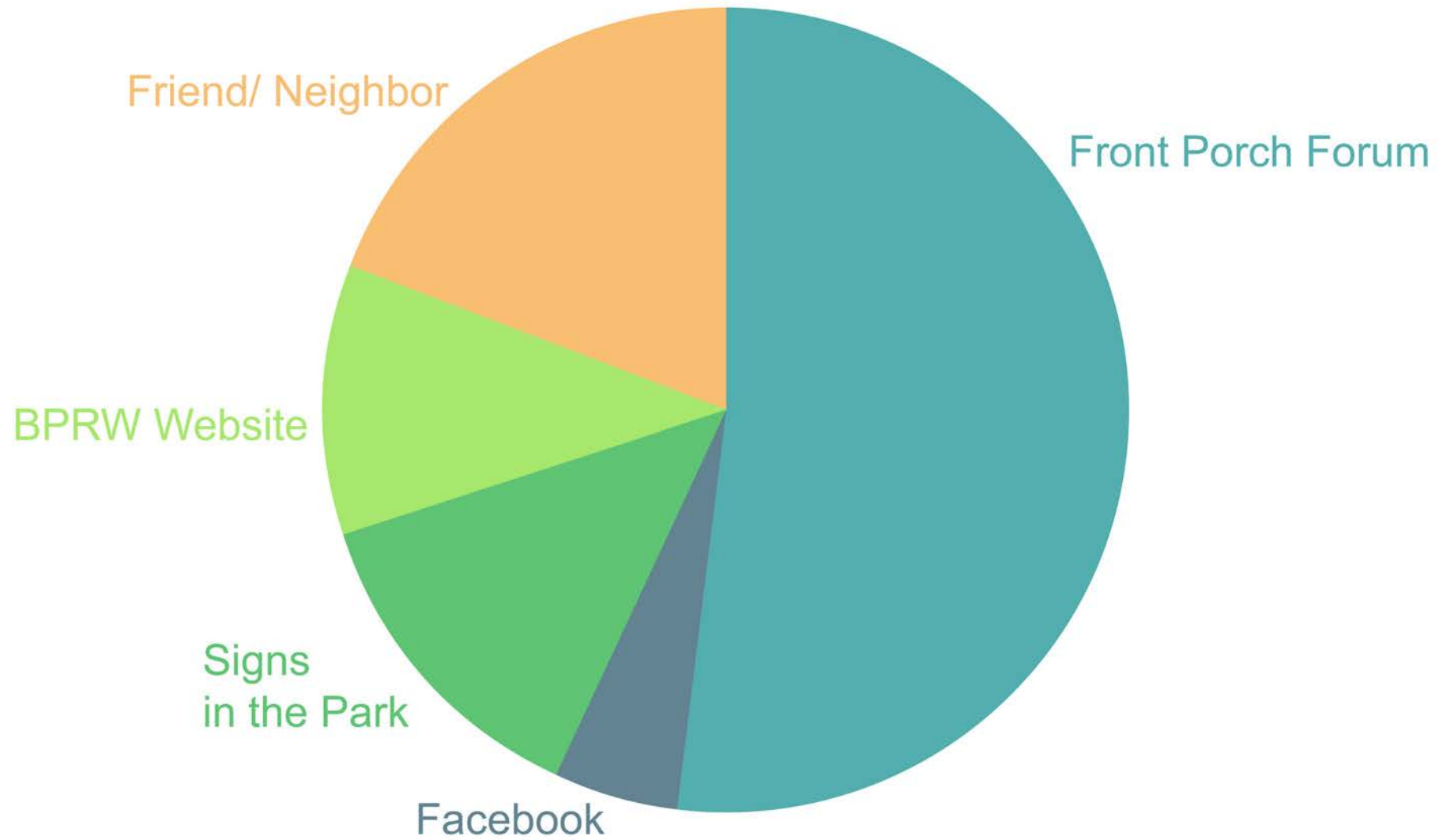
COMMUNITY QUESTIONNAIRE

# Zoom Poll

1. Where do you live?
2. Have you filled out the Community Questionnaire?  
No? See link in chat, we'd love to hear from you!

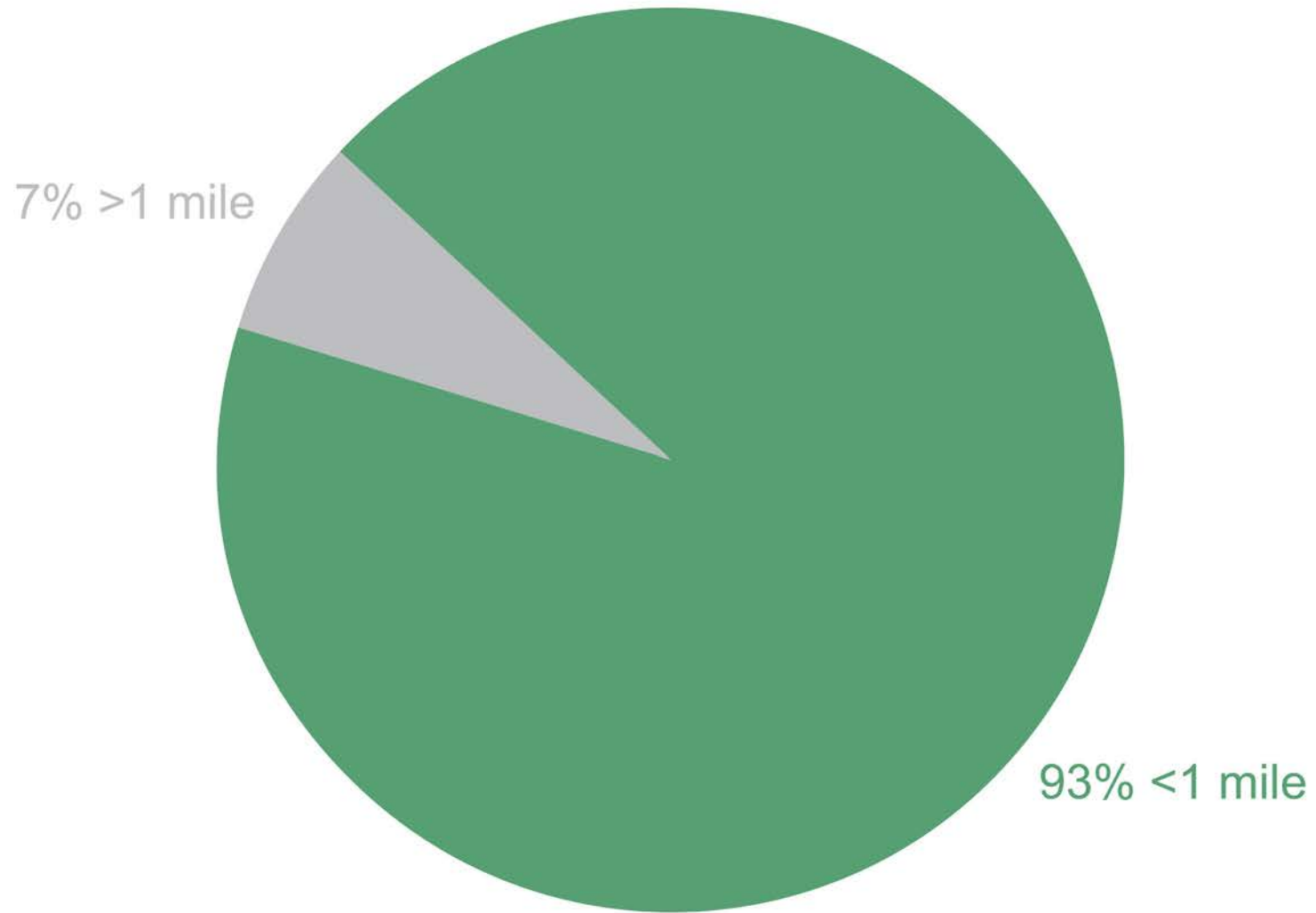
COMMUNITY QUESTIONNAIRE





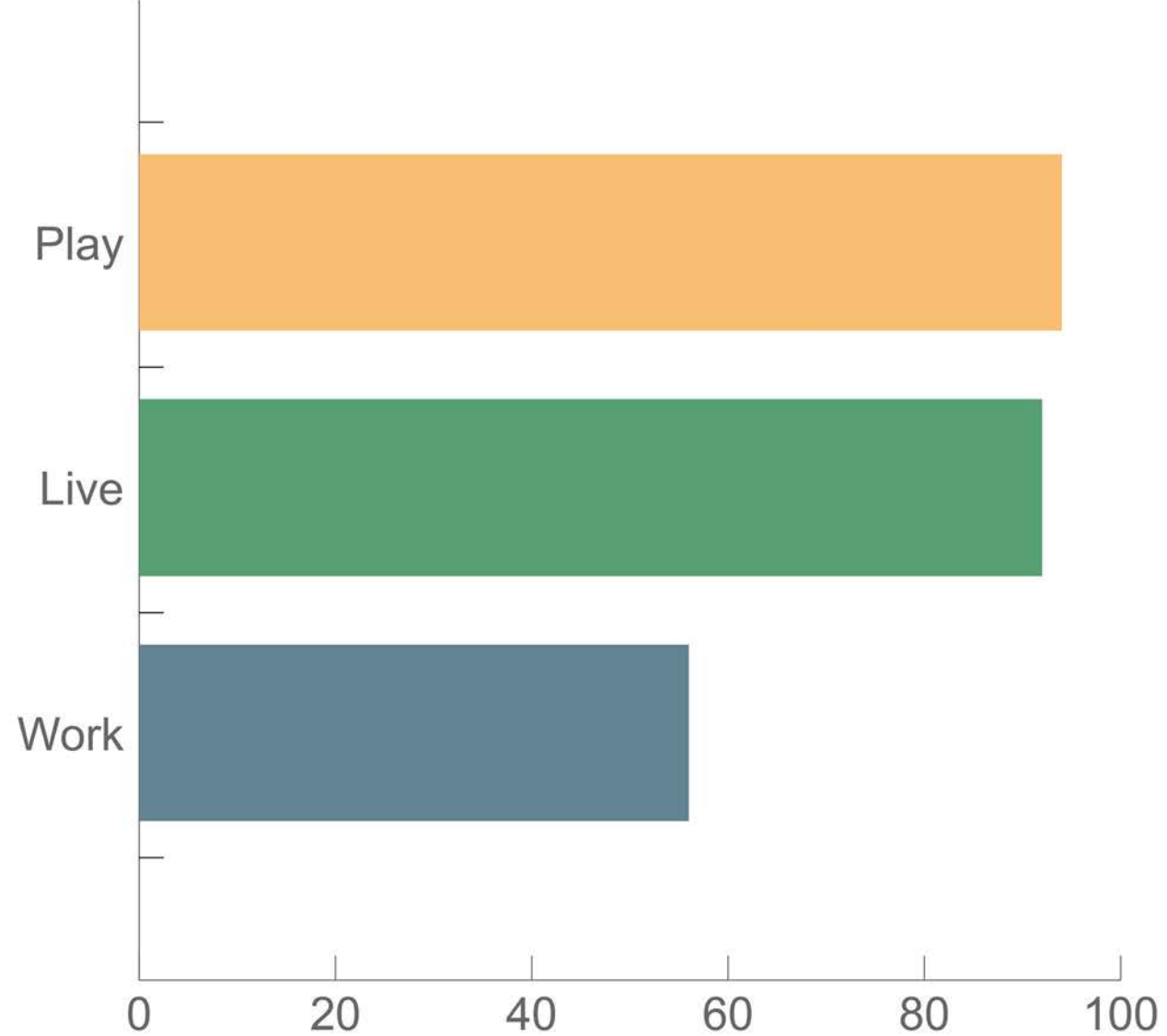
# COMMUNITY QUESTIONNAIRE

How did you hear about the questionnaire?



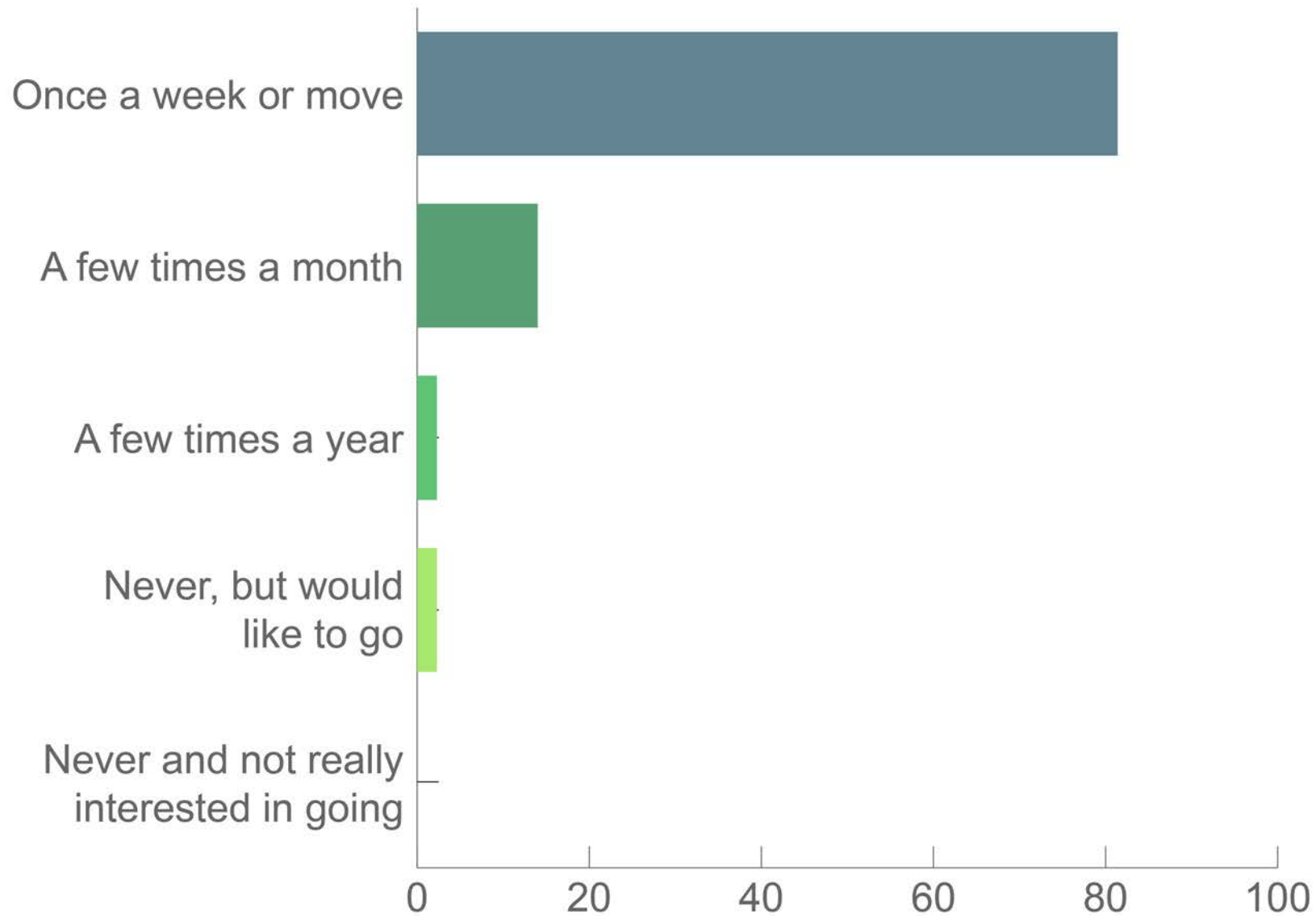
# COMMUNITY QUESTIONNAIRE

Where do you live?



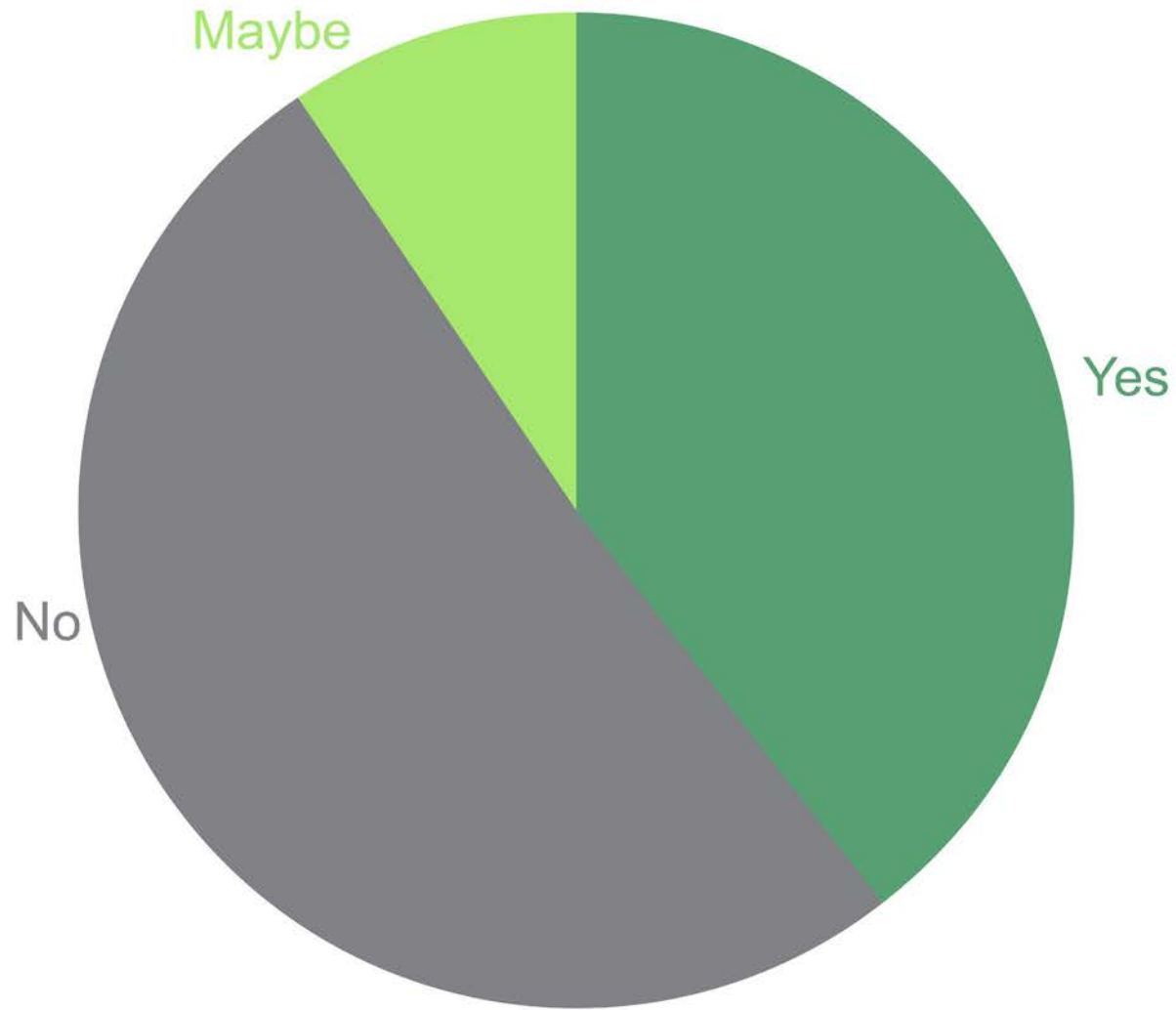
# COMMUNITY QUESTIONNAIRE

Do you live, work, or play near Calahan Park?



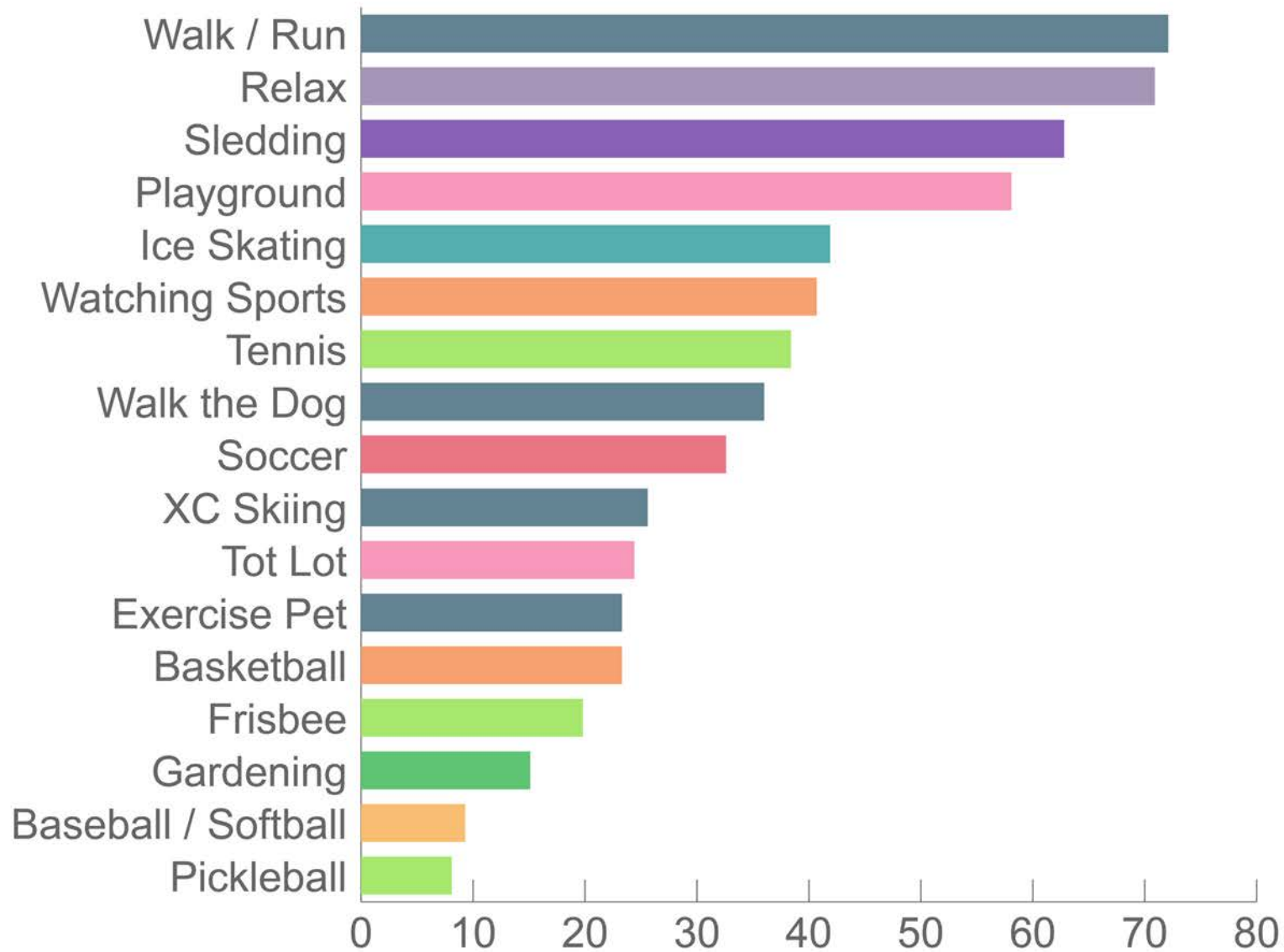
# COMMUNITY QUESTIONNAIRE

How often do you go to the park?



# COMMUNITY QUESTIONNAIRE

Do you go to the park for a specific sport?



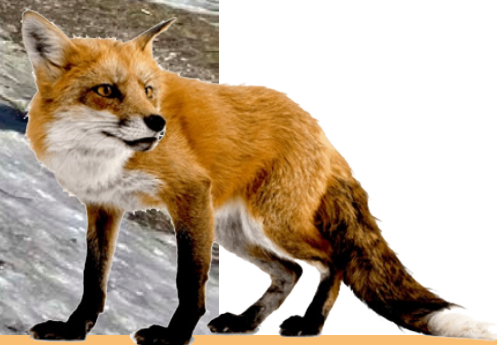
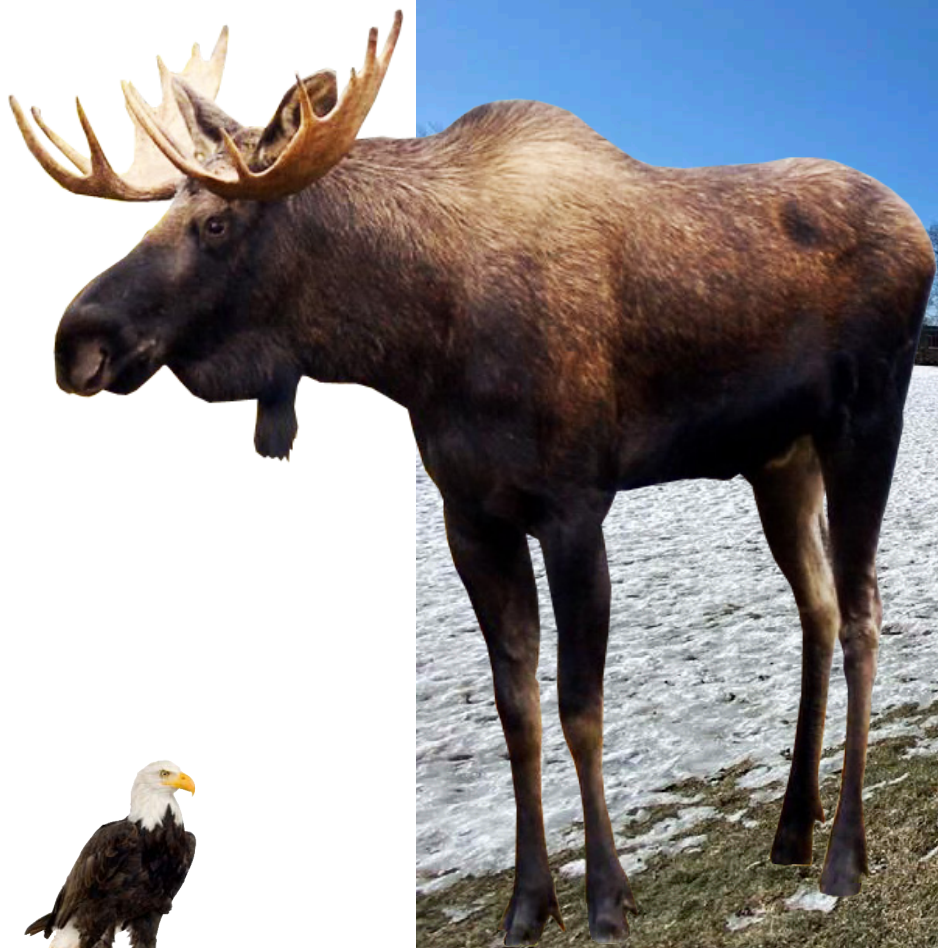
# COMMUNITY QUESTIONNAIRE

How do you use the park?



# COMMUNITY QUESTIONNAIRE

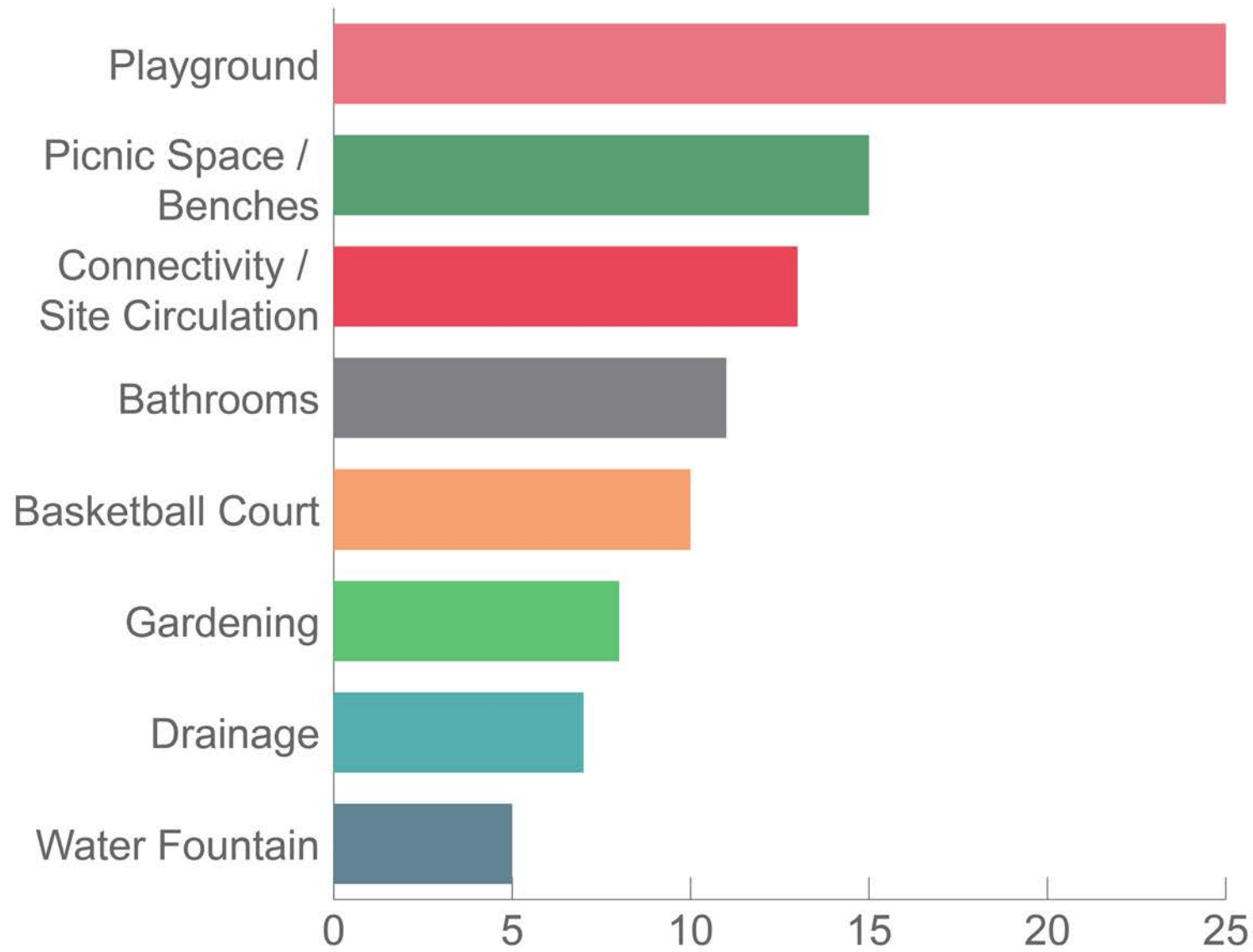
When you think of Calahan Park, what words or phrases come to mind?



# COMMUNITY QUESTIONNAIRE

What is the most interesting animal you've seen at the park?





# COMMUNITY QUESTIONNAIRE

What is something to be improved in the park?

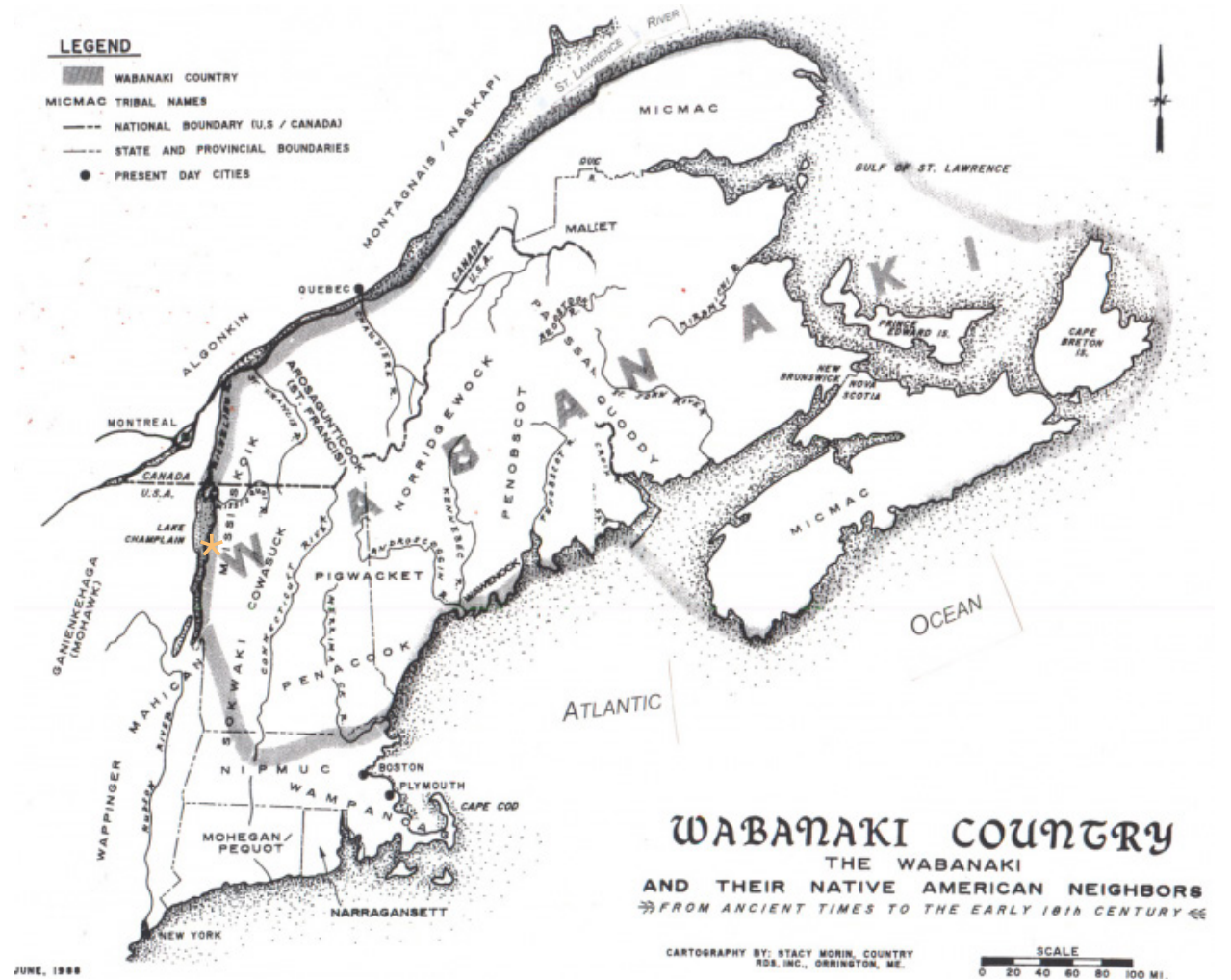
**Let's Chat!**

**COMMUNITY QUESTIONNAIRE**



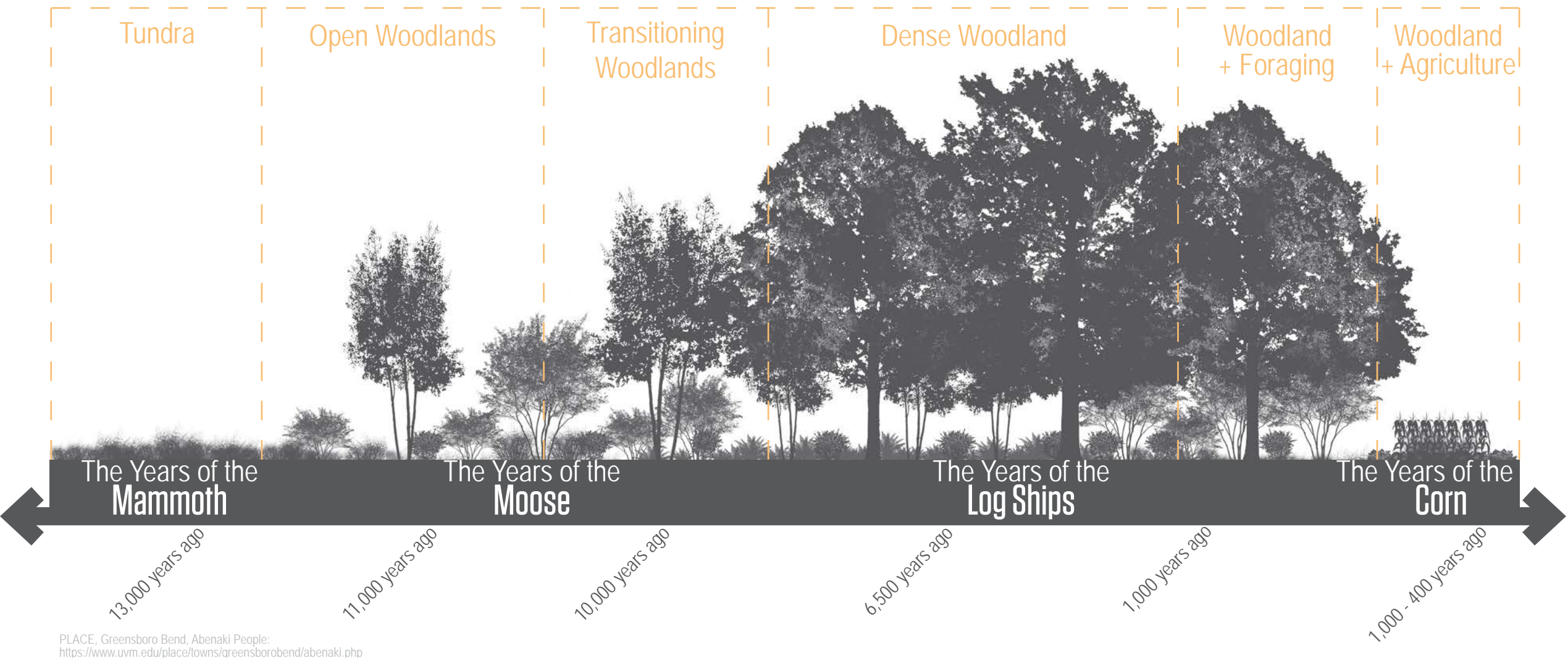
# SITE HISTORY

We acknowledge that we are studying Abenaki land. We are committed to understanding the pre-contact history of the area and to honor the stewardship of the earth that came before us through thoughtful analysis and design.



The Wabanaki Confederacy - The Dawnland, Source: <https://native-land.ca/maps/territories/abenaki-abenakis/>

# HISTORY: Land Acknowledgment



PLACE, Greensboro Bend, Abenaki People:  
<https://www.uvm.edu/place/towns/greensborobend/abenaki.php>

# HISTORY: Pre-Contact Landscape



# HISTORY: Hickok Estate est. 1850



Pamela Polston, Seven Days

**Nurseries**  
**Taylor A.. Prop of Burlington Nursery, Horticulturist and dealer in Fruit and Ornamental Trees, Flowering Shrubs and Roses. Perennial and Bedding Plants in great variety. Shelburn st**

Atlas of Chittenden Co., Vermont / Beers. New York : F. W. Beers, A. D. Ellis & G. G. Soule, 1869. Courtesy of UVM Digital Collections.

# HISTORY: A. Taylor Burlington Nursery



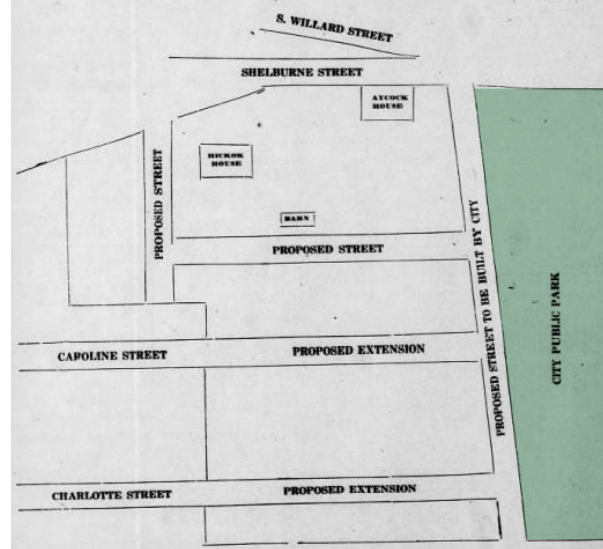
Map of the City of Burlington, Vermont, G.M. Hopkins, Philadelphia, PA, 1890. Courtesy of UVM Digital Collections.

# The Horatio Hickok Property May Be Bought Entire

Or you may buy the house and barn with plenty of land.  
Or you may buy large divisions for house lot developments.

For a generation lots have been developed south of the Hickok property, lots even a mile farther distant from City Hall bringing good prices.

Burlington must move south. Probably the next public school will be built in the park just south of the Hickok property. New factories, as they are built must locate in the south part of the city.



The Hickok lots today are as central as were the Hungerford lots a generation ago. For years would-be purchasers, seeing the profitable developments way south in the city have sighed for the chance to turn this Hickok pasture into house lots.

Now is your chance. Burlington is evidently in the early stages of a residence building boom, and unless signs fail, the city will soon be in another period of putting up 200 houses a year.

The Hickok property will provide about 100 lots. Someone will develop it with a good profit for his pains.

Is that somebody?  
See detailed sketch at this office.

**H. S. HOWARD**  
Real Estate. The Store

# HISTORY: South Park est. 1924





McAllister Collection , UVM, <https://cdi.uvm.edu/image/uvmcdi-5283>

Under Construction



McAllister Collection , UVM, <https://cdi.uvm.edu/image/uvmcdi-5278>

1928 - Completed

# HISTORY: South Park



McAllister Collection , UVM, <https://cdi.uvm.edu/image/uvmcdi-3438>

1934 - Sewer Project



McAllister Collection , UVM, <https://cdi.uvm.edu/image/uvmcdi-3501>

1939 - Intersection of Pine and Locust

# HISTORY: South Park

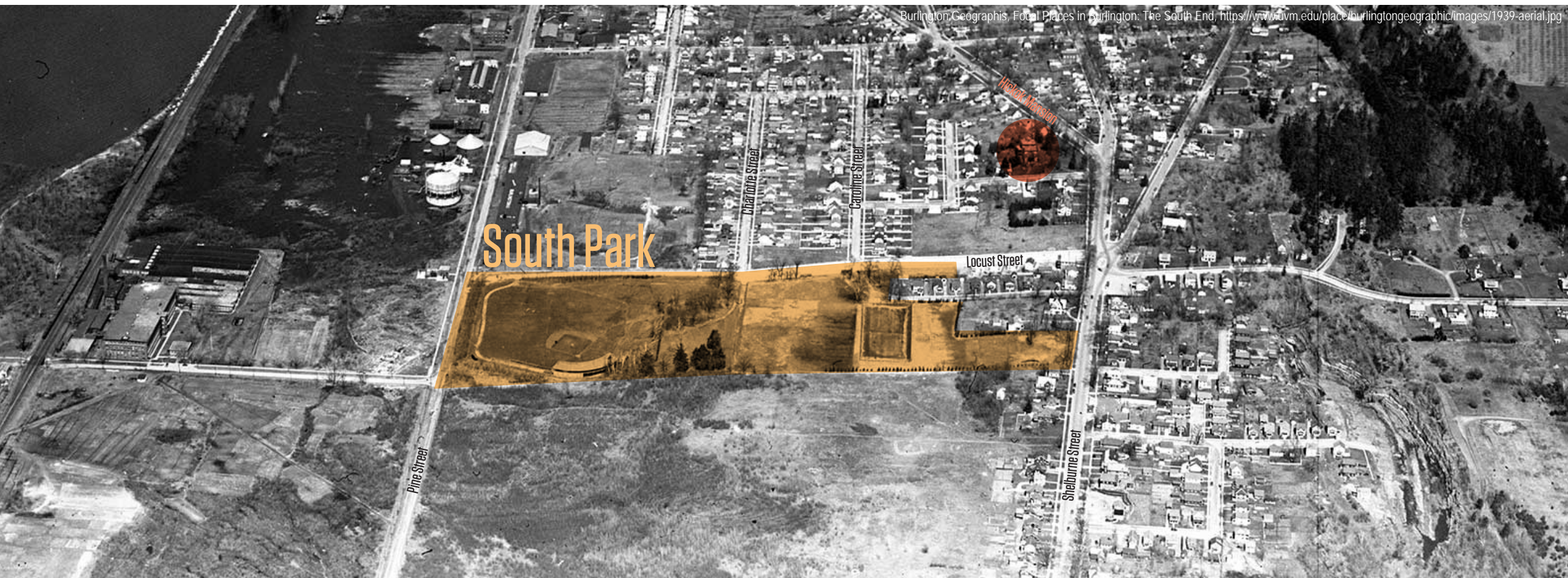


1938 - Tennis Court Installation



1940's - Toboggan Slide

# HISTORY: South Park



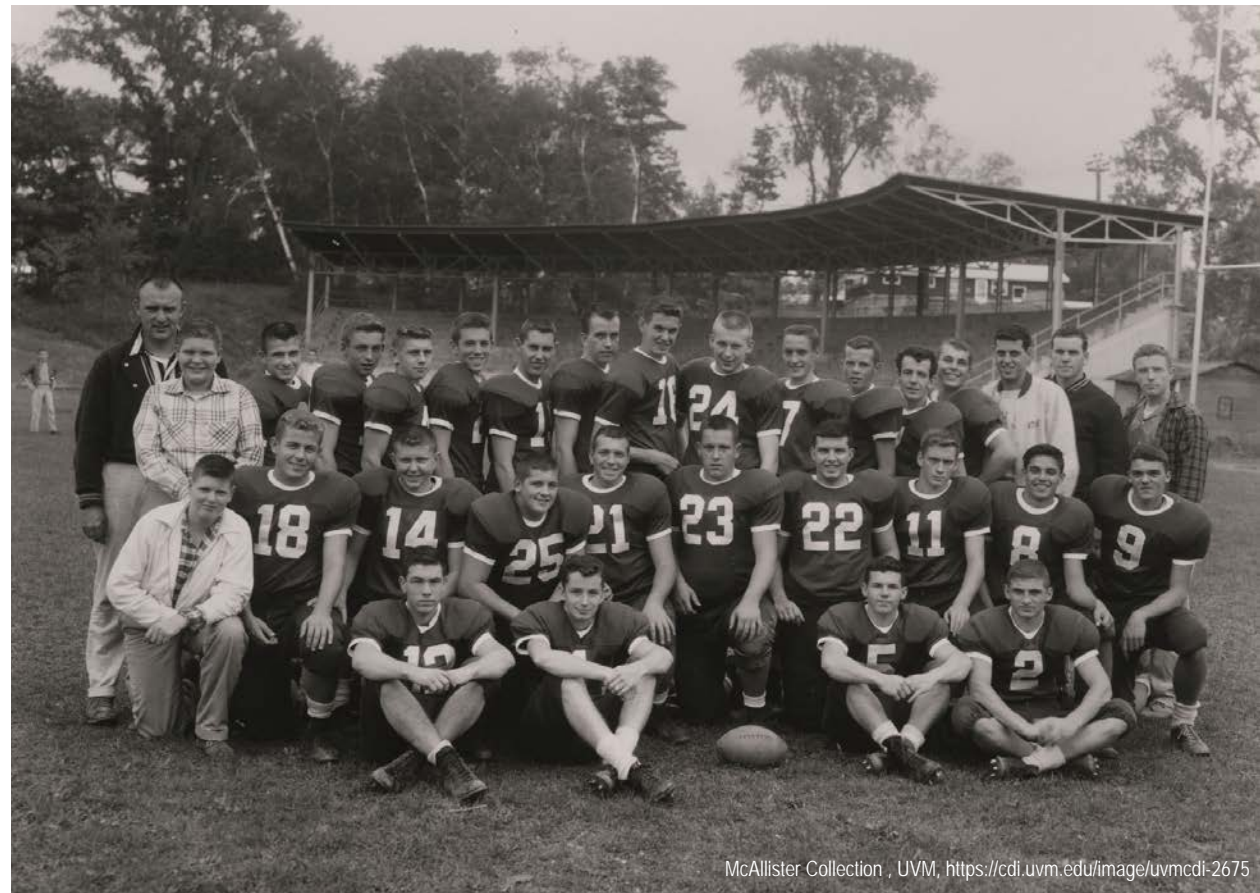
1939 VIEW FROM THE SOUTH

**HISTORY: Site Layout - 1939**



McAllister Collection , UVM, <https://cdi.uvm.edu/image/uvmcdi-7013>

1947 - Burlington High School Baseball



McAllister Collection , UVM, <https://cdi.uvm.edu/image/uvmcdi-2675>

1958 - Cathedral High Football

# HISTORY: Programming



Burlington Area History FB Group, Bob Blanchard, October 29, 2019

1955 - Little League



Burlington Area History FB Group, Bob Blanchard, December 7, 2019

1963 - Summer League

# HISTORY: Programming



Burlington Area History FB Group, Bob Blanchard, May 5, 2020

1963 - Lighting at lower field



Burlington Area History FB Group, Bob Blanchard, October 12, 2019

1970's - Tennis Courts

# HISTORY: Programming



# HISTORY: Site Layout - 1978





*Professor C. Lyman Calahan pruning apple trees in the research orchard, ~1976.*

## Council action

Free Press Staff Writer

In other action Monday night, the Burlington City Council:

- Renamed South Park at Locust and St. Paul streets after the late C. Lyman Calahan, a Parks and Recreation Commissioner from 1966-86. Calahan's wife, Margaret, and son, Chuck, received a plaque honoring Calahan.

- Increased the Marketplace's common area fees by 11.07 percent. The fees, which will now raise \$38,085 more

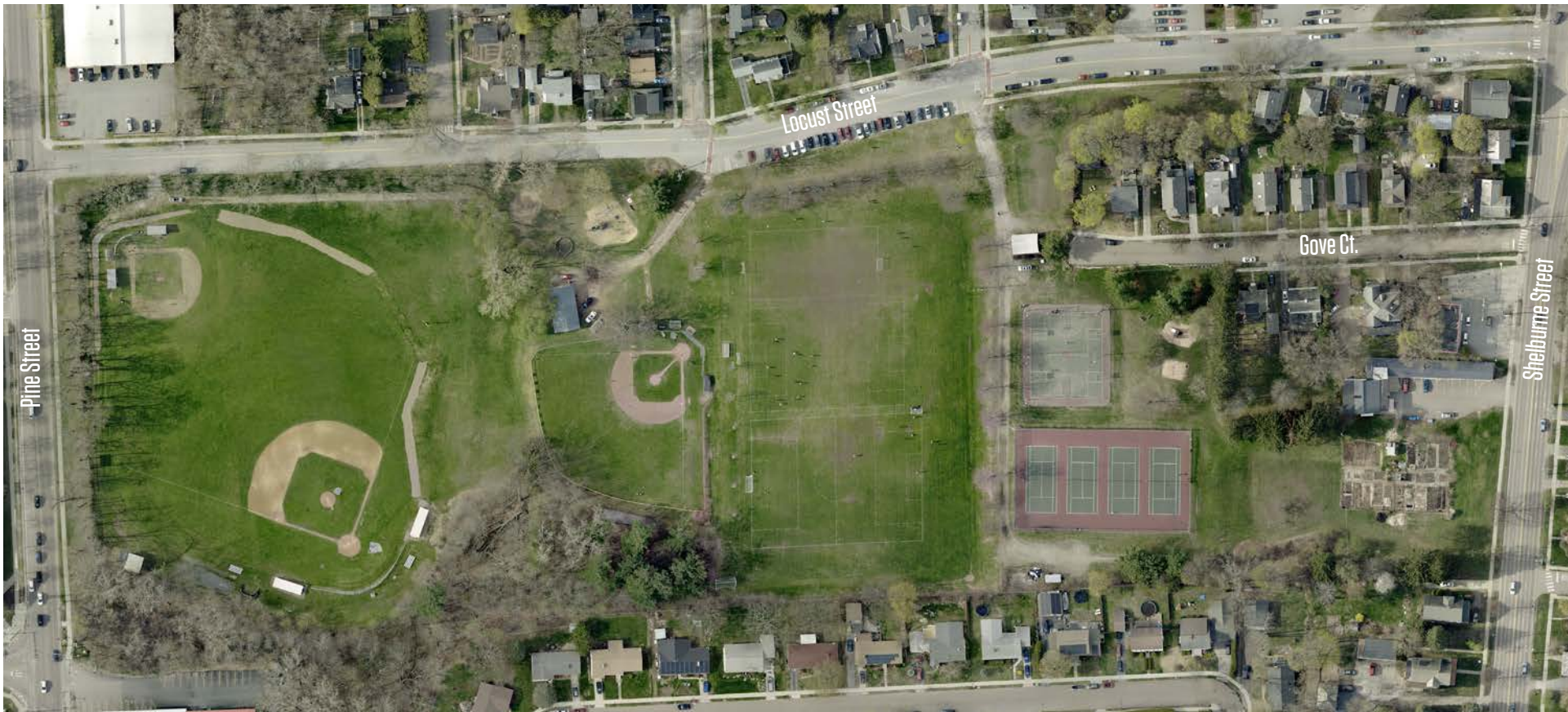
than the current \$344,035, pay for maintenance, promotion and the operations of the Marketplace. About \$35,000 of the extra money will be dedicated to promotion.

- Approved the allocation of federal Community Development Block Grants recommended by Mayor Peter Clavelle and an advisory group. Clavelle will submit the request to the federal government for approval.

Burlington Free Press, May 15, 1990



# HISTORY: Calahan Park - 1990



# Let's Chat!

What is your favorite memory at Calahan?

## HISTORY: Calahan Park



# CIRCULATION

# WALKING DISTANCE TO CALAHAN PARK

- - - South End Study Area
- · - · - Calahan Park
- 5 Minute Walk
- 10 Minute Walk
- 15 Minute Walk
- Vehicular Traffic

South End  
Walkability Score:

# 60/100

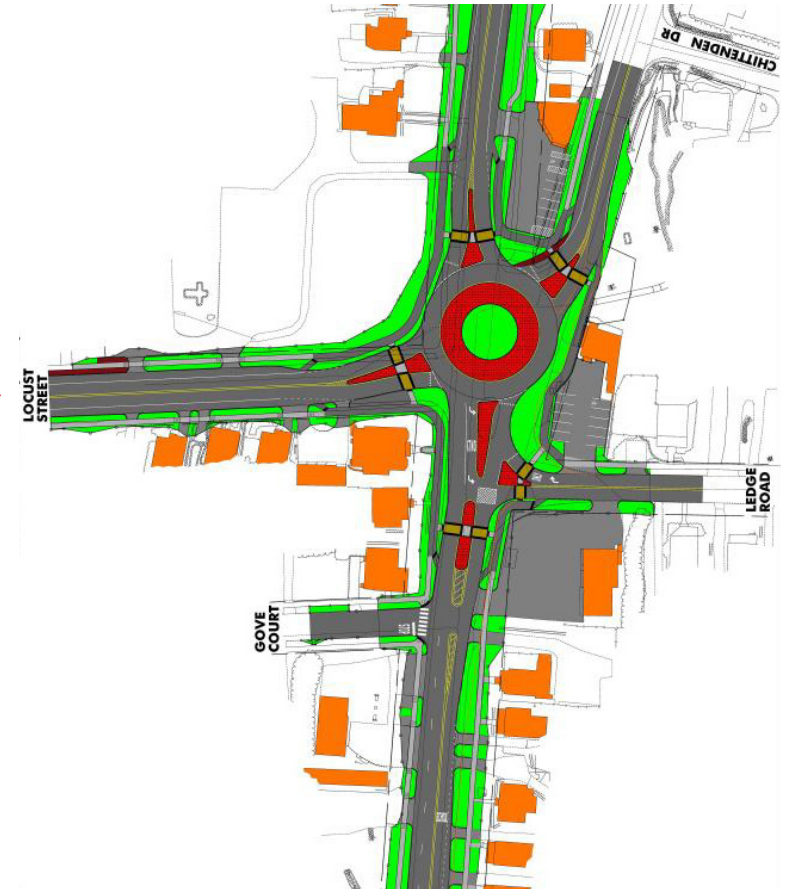


Source: Walkscore.com  
(c) Google Earth Aerial

# CIRCULATION: Walkability



Champlain Parkway

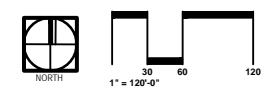


Shelburne St. Roundabout

# CIRCULATION: Upcoming Adjacent Work



- LEGEND:**
-  Entrance Opportunities
  -  Existing Connections
  -  Connection Opportunity
  -  Vehicular Travel to Park
  -  Existing Parking Associated with Park

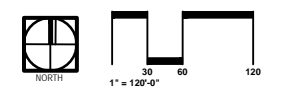


# CIRCULATION: Connections / Entrances



**LEGEND:**

-  Entrance Opportunities
-  Existing Connections
-  Connection Opportunity
-  Vehicular Travel to Park
-  Existing Parking Associated with Park
-  Primary Existing Paths
-  Secondary Existing Paths
-  Connection Opportunities
-  Champlain Parkway Shared Use Path
-  Existing Bike Parking



# CIRCULATION: Within the Park



Shelburne Road



Locust Street



Locust Street



Pine Street



Pine Street

# CIRCULATION: Identity & Wayfinding





# PROGRAMMING

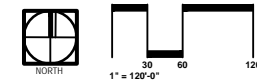


# PROGRAMMING: Current Site



**LEGEND:**

- Existing Playground
- Existing Soccer and Frisbee
- Existing Baseball
- Existing Basketball
- Existing Hockey
- Existing Tennis / Pickleball
- Existing Community Garden
- Existing Sledding
- + Summer Camps
- + Non-Athletic School Use
- + Community Events
- + Passive Park Use



# PROGRAMMING: Current Site Uses

## SCHOOL & CENTER SITE USE

- - - South End Study Area
- · - · Calahan Park
- School or Center

KING STREET  
CENTER

STEPPING STONES  
CHILDREN'S CENTER

PINE FOREST  
CHILDREN'S CENTER

### CHAMPLAIN ELEMENTARY SCHOOL

2 min Drive  
3 min Bike  
9 min Walk

### EDMUNDS MIDDLE SCHOOL

4 min Drive  
9 min Bike  
25 min Walk

### CHRIST THE KING SCHOOL

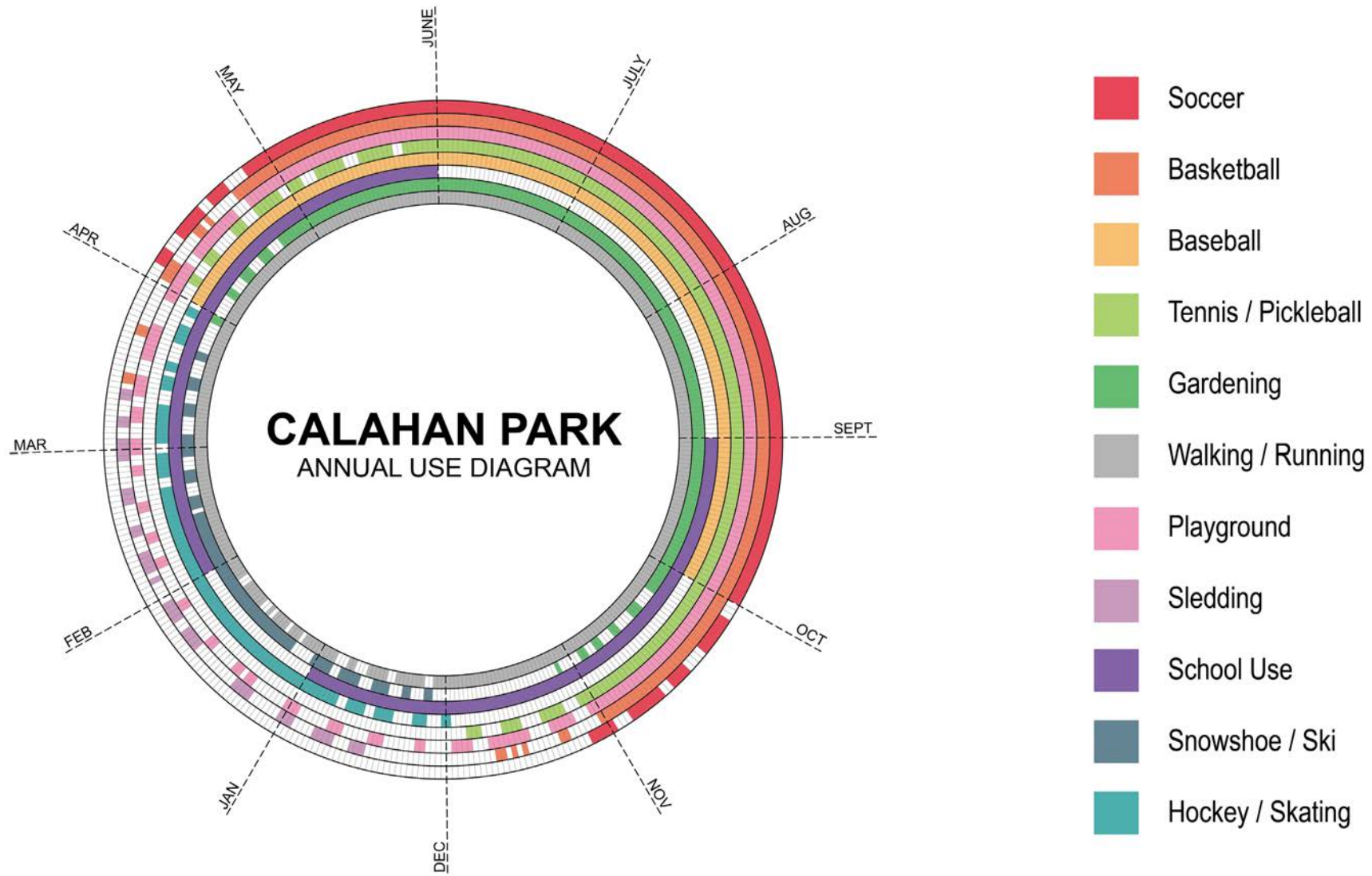
0 min Drive  
1 min Bike  
2 min Walk

### RICE MEMORIAL HIGH SCHOOL

4 min Drive  
10 min Bike  
26 min Walk

4000 FT

PROGRAMMING: School & Center Use



# PROGRAMMING: Current Seasonal Use



LEGEND:

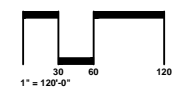
- Existing Playground
- Existing Hockey
- Existing Sledding

# PROGRAMMING: Winter Program



**LEGEND:**

- Existing Site Lights
- Site Lights - Recently Removed
- Existing Street Lights
- Electrical Hookup
- Water Access



# PROGRAMMING: Site Utilities



# STORMWATER



## LOCAL ECOLOGY, GLOBAL IMPACT

### STORMWATER MATTERS

Per planBTV: Downtown & Waterfront, “thinking about parks as part of the stormwater system is crucial”. Natural stormwater management is more desirable - from livability, financial and environmental perspectives - than installing mechanical infrastructure to serve the same purpose. We must manage our parks and open spaces in ways that support and promote percolation, runoff retention, infiltration and transpiration. The health of our stormwater systems affects the health of our streams & rivers, which affects the health of Lake Champlain, which affects the health of our rains, our mountains, our wildlife, our oceans...

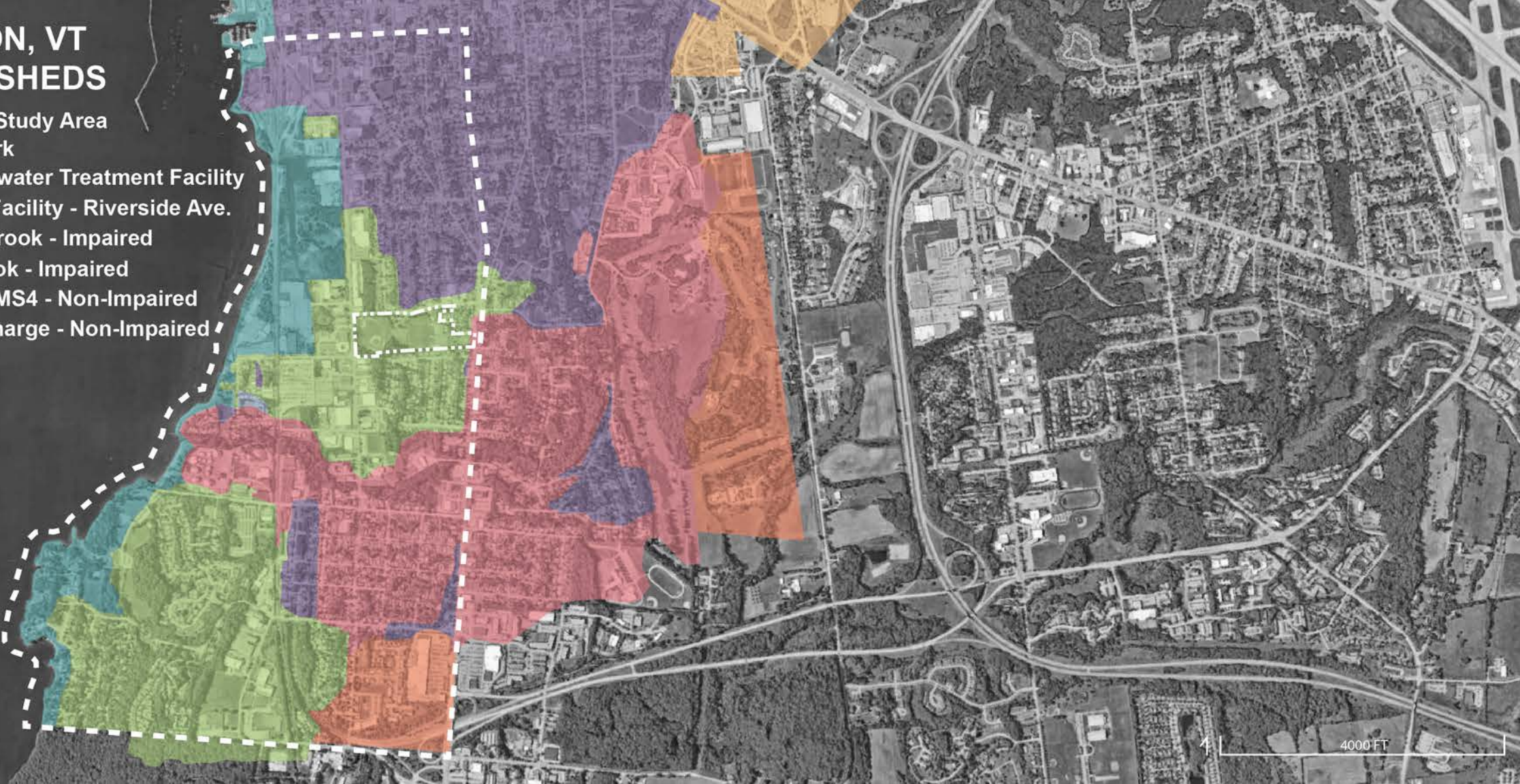


Burlington Parks, Recreation & Waterfront  
Master Plan, October 2015

# STORMWATER: The Green Machine

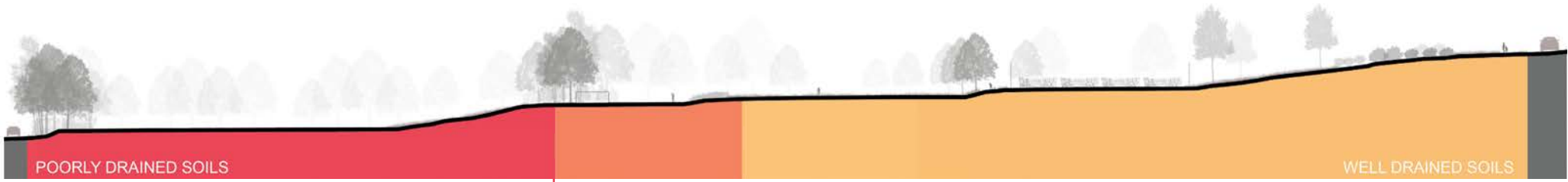
# BURLINGTON, VT SUBWATERSHEDS

- - - South End Study Area
- · - · Calahan Park
- Main Wastewater Treatment Facility
- East Plant Facility - Riverside Ave.
- Englesby Brook - Impaired
- Potash Brook - Impaired
- Burlington MS4 - Non-Impaired
- Direct Discharge - Non-Impaired

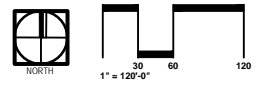


Subwatershed Map, Burlington Public Works, 2021  
(c) Google Earth Aerial

# STORMWATER: Where does the water go?



- LEGEND:**
- Existing Wet or Flood Prone Areas
  - Natural Wet Wooded Area
  - Existing Infiltration Strips
  - Existing Green Infrastructure
  - Proposed Combined Sewer Overflow Storage Tank (Approximate Location)
  - Direction of Stormwater Flow



# STORMWATER: Drainage



Hockey Rink



Tot Lot Swings



Upper Pathway



Upper Woodland



Gaga Ball



Lower Pathway



Bentley Field



S.D. Ireland Field



Pine Street Woodland

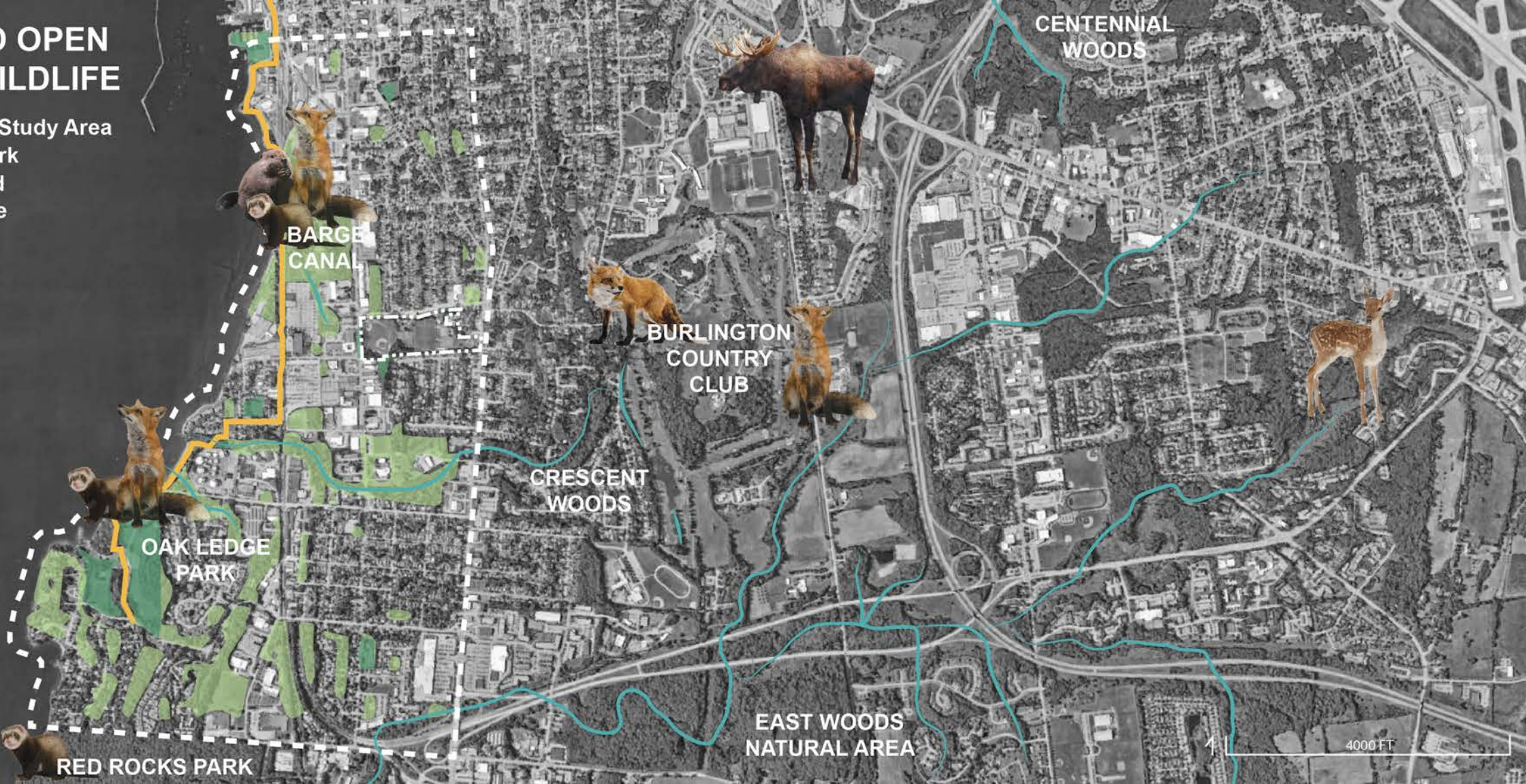
# STORMWATER: Field Study

# ECOLOGY + VEGETATION



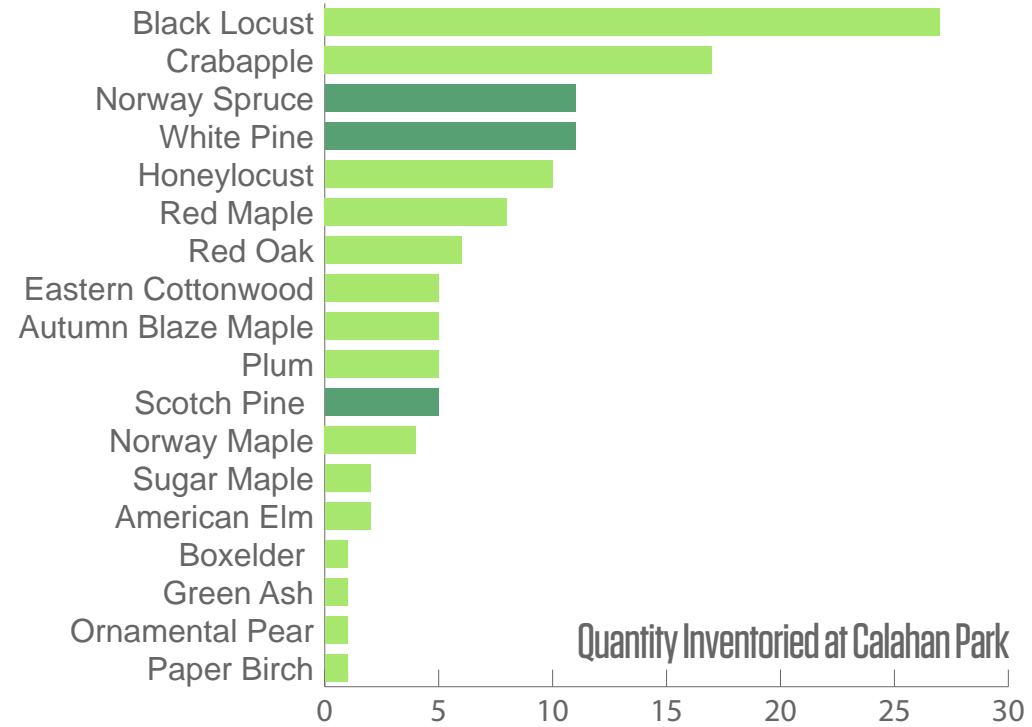
# SOUTH END OPEN SPACE & WILDLIFE

- - - South End Study Area
- · - · - Calahan Park
- Public Land
- Open Space
- Bike Path
- Streams
- Fox
- Fisher
- Beaver
- Deer
- Moose



(c) Google Earth Aerial, Winooski Valley Park District, & Burlington Open Space Plan

# ECOLOGY/VEGETATION: Regional Wildlife



# ECOLOGY/VEGETATION: In the Park

WHAT **WORKS?**

WHAT **DOESN'T WORK?**

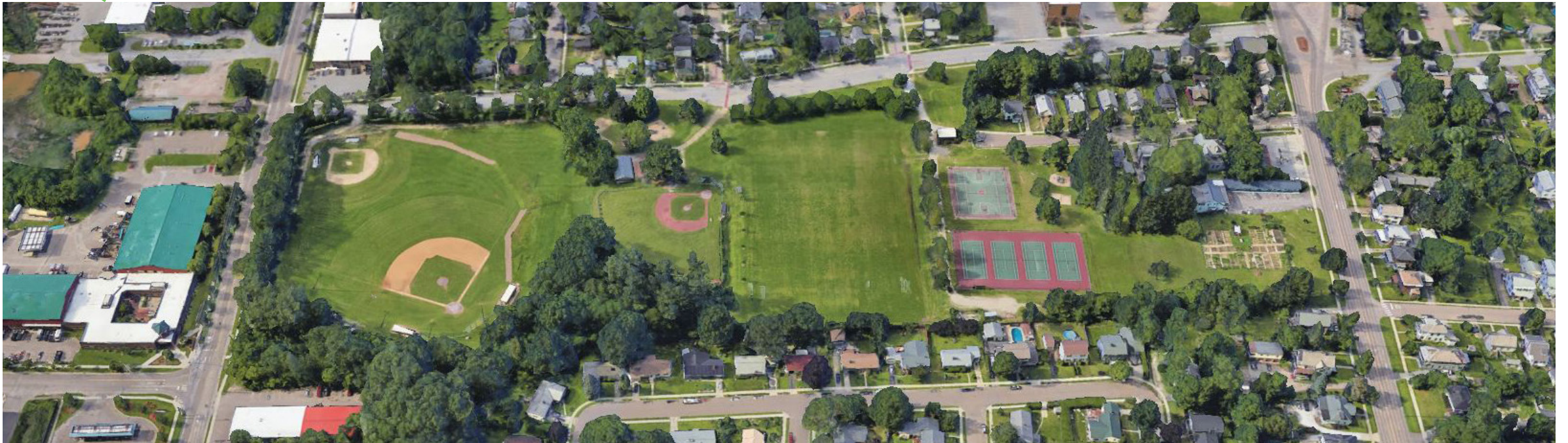
WHAT ARE THE **OPPORTUNITIES?**

**BREAKOUT ROOMS**





# Questions?



# Thank you!

Thank you for participating! Feel free to reach out to Sophie with any additional project related questions!



Sophie Sauvé  
(802)86507248

[ssauve@burlingtonvt.gov](mailto:ssauve@burlingtonvt.gov)



Horsley Witten Group  
*Sustainable Environmental Solutions*

