

# City Hall Park Construction Update



PROJECT MANAGED BY:



WORKING IN PARTNERSHIP WITH:



# Team

## Burlington Parks, Recreation and Waterfront (BPRW)

- Diana Wood  
*Communications Manager*
- Nina Safavi  
*Comprehensive Planner*

## Burlington Public Works Department (DPW)

- Laura Wheelock  
*Project Manager*
- Rob Goulding  
*Communications*

## Community & Economic Development Office (CEDO)

- Kirsten Merriman-Shapiro  
*Project Manager*

## Burlington City Arts (BCA)

- Doreen Kraft, Executive Director

## Construction & Design

- **SD Ireland** *General Contractor*
- **JTC** - *Resident Engineer - City's On-Site Representative*
- **Wagner Hodgson** *Landscape Architects*
- **Dubois & King** *Design Engineer*



# Agenda

- Project Overview
- Schedule
- Order of work
- Traffic, Pedestrian and Parking Impacts
- Available Parking
- Adjacent Projects and Impacts
- Alternate Amenities
- Outreach/Resources
- Questions & Comments



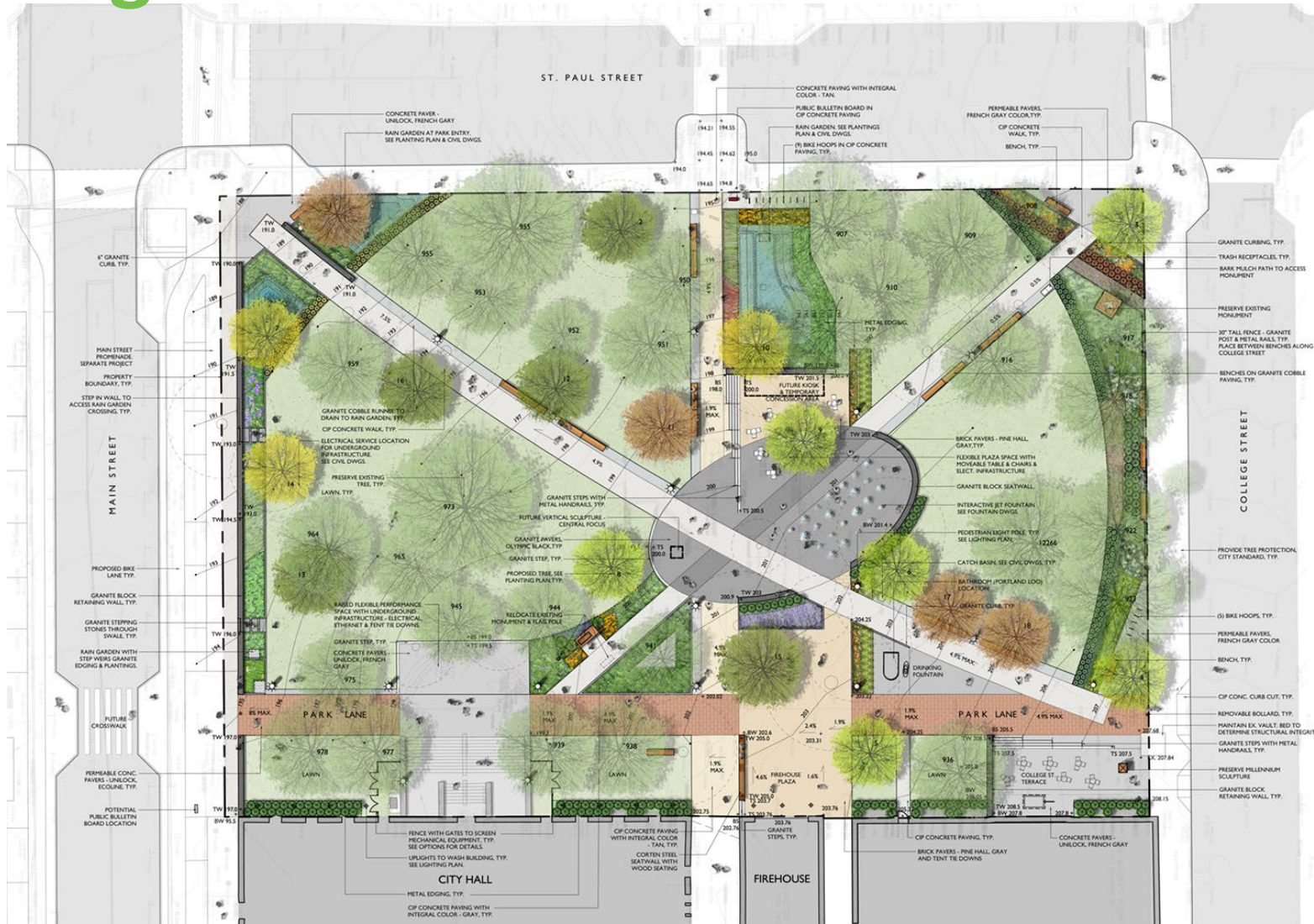
PROJECT MANAGED BY:



WORKING IN PARTNERSHIP WITH:



# Design Plan Overview



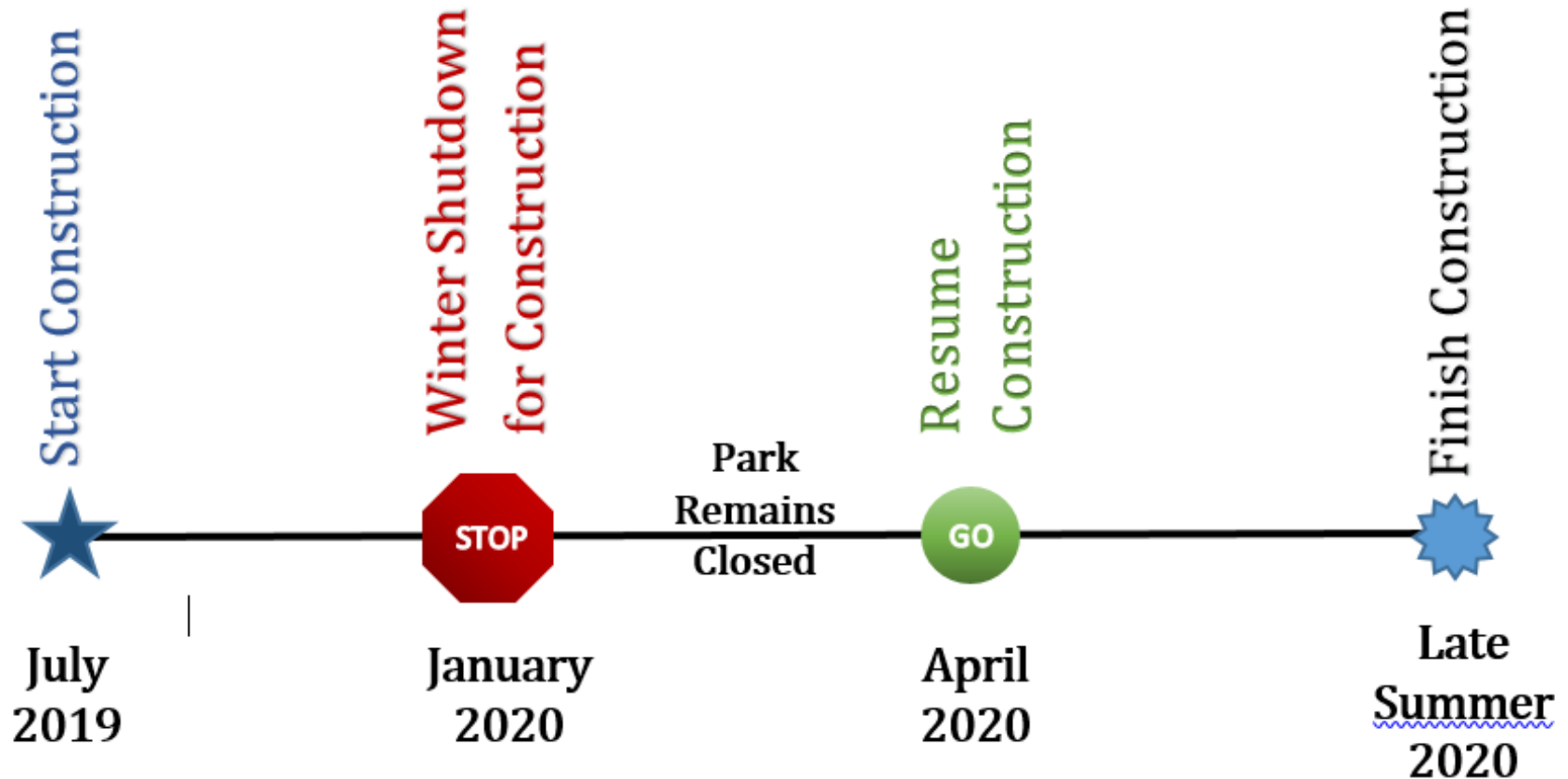
PROJECT MANAGED BY:



WORKING IN PARTNERSHIP WITH:



# Project Schedule - *Tentative*



WORK HOURS

Monday – Friday 7am-7pm

Saturday 7am-5pm



# Order of Work - *Tentative*

## 2019 WORK

- Construct Fencing
- Pedestrian Detours
- Demolition or Removal
  - Fountain
  - Benches
  - Trees
  - Walkways
- Contaminated Soil Remediation
- Utilities
- Fountain

## 2020 WORK

- Rain Gardens
- Soil Cells for Trees
- Retaining and Seating Walls
- Lighting & Electrical
- Walkways, Terraces, Pavers
- Benches & Bike Racks
- Fences & Art
- Irrigation and Sod
- Trees & Trees and Planting Beds



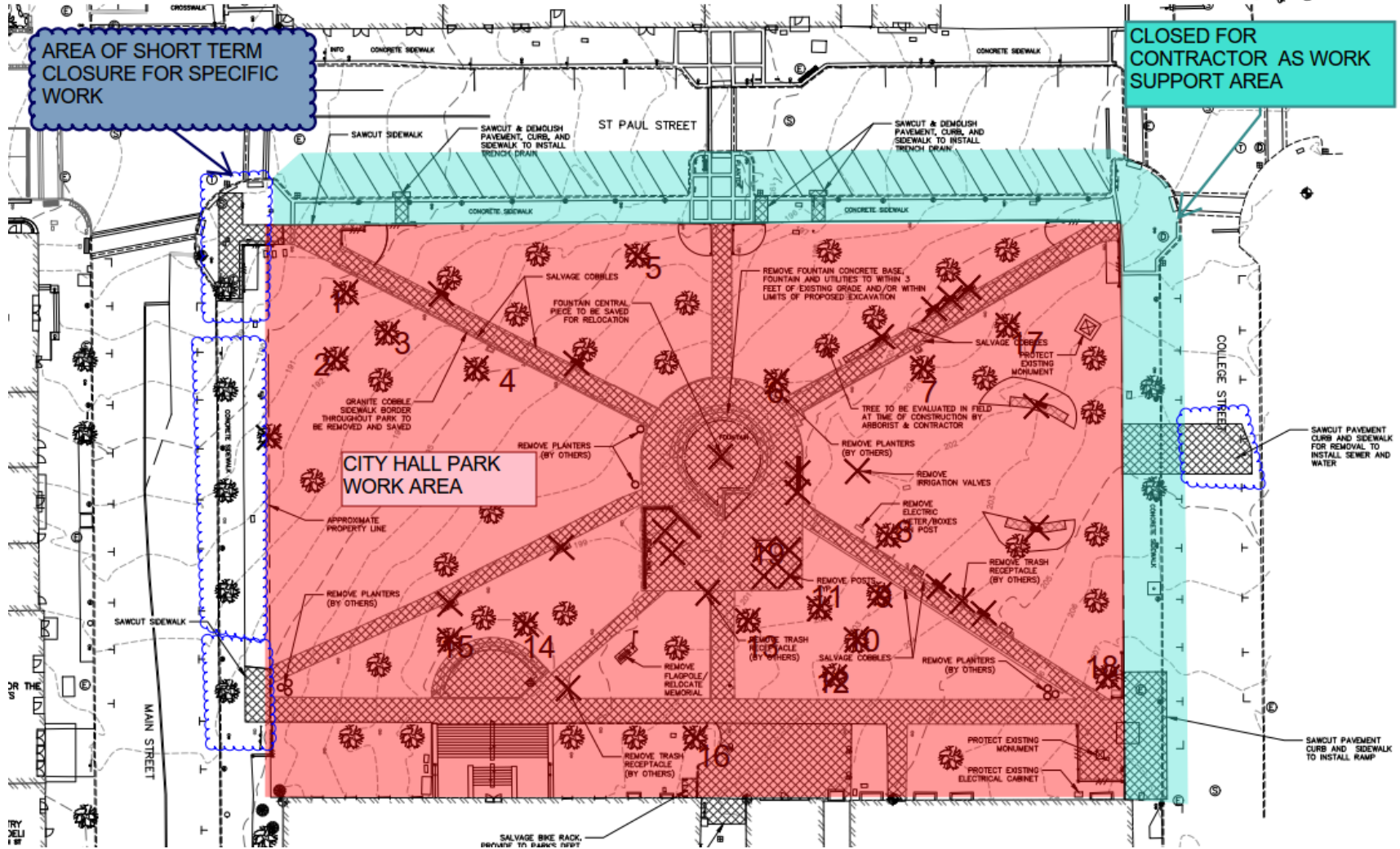
PROJECT MANAGED BY:



WORKING IN PARTNERSHIP WITH:



# Traffic, Pedestrian and Parking Impacts



PLEASE NOTE: Access to City Hall and BCA back doors, will be emergency EXIT only




PROJECT MANAGED BY:  
**BURLINGTON PARKS RECREATION WATERFRONT VERMONT**

WORKING IN PARTNERSHIP WITH:  
**BURLINGTON, VT PUBLIC WORKS**



# Available Parking




**BURLINGTON**

---

**COLLEGE ST. GARAGE**  
2 Hours Free, \$8/Day

**LAKEVIEW GARAGE**  
2 Hours Free, \$8/Day

**MARKETPLACE GARAGE**  
2 Hours Free, \$10/Day



**CHURCH STREET MARKETPLACE**

FOR MORE PARKING  
OPTIONS PLEASE VISIT:  
[WWW.PARKINBURLINGTON.COM](http://WWW.PARKINBURLINGTON.COM)



PROJECT MANAGED BY:



WORKING IN PARTNERSHIP WITH:





# Adjacent Projects and Impacts

- Construction Activities – City Hall Park
  - Noise & Dust similar to St. Paul
  - Vibrations at times, minimal
- St Paul Street Construction – September 2019
  - Block between Main & King finishing in August 2019
- Maple Street water & paving – August - October 2019
- Recently renovated building on College & Pine
  - Office-based work force of ~120 people



PROJECT MANAGED BY:



WORKING IN PARTNERSHIP WITH:



# Alternate Amenities

- Green Spaces and Benches
  - Waterfront Park
  - Battery Park and Hill
  - Library
  - UVM
- St. Paul Street
- 10 minute walk



# Outreach & Resources

- enjoyburlington.com
- burlingtonvt.gov/construction
- parkburlington.com

**BURLINGTON PARKS RECREATION WATERFRONT VERMONT**

Enjoy Burlington Blog Resources

Event Calendar Program Guide Program Sign Up Reserve a Space Reserve a Campsite

PARKS & BEACHES RECREATION PATHS & TRAILS CAMPGROUND MARINAS FACILITIES GARDENS CEMETERIES TREES CONSERVATION RECREATION PROGRAMS & ACTIVITIES

## City Hall Park Improvements

**RECENT POSTS**

- Ledy Park Public Workshop
- Pomeroy Basketball Court Resurfacing
- City Hall Park Improvements
- Waterfront Park Regrading and Utility Upgrades
- Burlington Greenway Updates

**Welcome to the BPRW City Hall Park Project Update Page!**

BPRW will be posting all the latest information on City Hall Park right here to help inform you on upcoming plans and construction details of the project.

OFFICE OF THE MAYOR | CITY COUNCIL | BOARDS & COMMISSIONS | A-Z DIRECTORY

SELECT LANGUAGE | SEARCH

THE CITY OF BURLINGTON

DEPARTMENTS PROJECTS PROPERTY INFO CALENDAR CITY COUNCIL NPAs

## Construction Portal

The schedule listed for each project is subject to change. Please email [rpoulin@burlingtonvt.gov](mailto:rpoulin@burlingtonvt.gov) with any questions.

**Reinvestment Projects**

- Under Construction
- 2019 Projects
- Completed Projects
- All Projects

**2019 Projects**

See all capital projects planned for 2019! This includes all paving, sidewalk, transportation water and sewer projects.

**Active**

See all capital projects currently under construction in Burlington. For exact schedules please contact 802-863-9094

**All Projects**

See all projects proposed, under construction or built since passage of the 2018 infrastructure bonds.

**Completed**

See all of the completed capital projects in Burlington since passage of the 2018 infrastructure bonds.

BURLINGTON PUBLIC WORKS

BURLINGTON RECREATION DEPARTMENT

Electric

PLANNING DEPARTMENT

STREET STREET

BURLINGTON

## Parking in Burlington... A Change for the Better

DOWNTOWN PARKING IMPROVEMENT INITIATIVE - BURLINGTON, VERMONT

Home Parking in Burlington Enforcement and Tickets Transportation News about Parking About Us Contact Us

### Parking Map

#### Parking Map for Downtown Burlington, Vermont

Park Burlington's interactive map is a great way to plan your trip to downtown BTW ahead of time. The mobile-responsive map will let you know where the many on-street and off-street parking options are in Burlington.

**\*\*\*Push this icon in the top left corner to view all the different categories of parking.**

View all bike parking options [here](#).

As we continue to develop the map, we'd appreciate your input and feedback: [click here to fill out a quick survey](#).

Interactive Parking Map, Burlington, Vermont

2 CHERRY ST LOT

LAKEVIEW GARAGE

Burlington Free Press

MARKET PLACE GARAGE

COLLEGE STREET GARAGE

2 Burlington Square

PARK PLAZA LOT

CORPORATE PLAZA GARAGE

2 CENTER STREET LOT



# Questions and Comments

Do you have events or operations that will be impacted by this project?



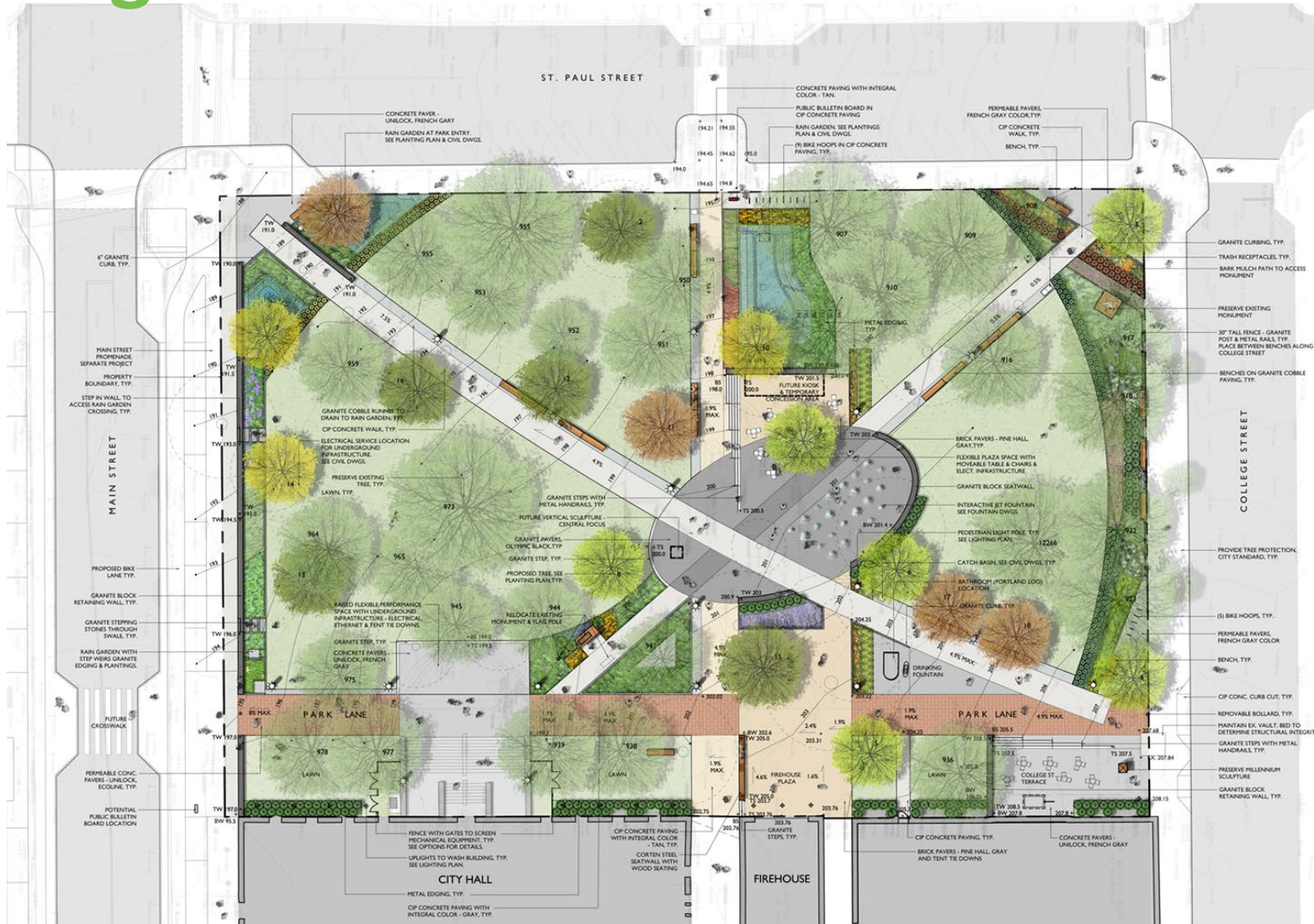
PROJECT MANAGED BY:



WORKING IN PARTNERSHIP WITH:



# Design Plan Overview



PROJECT MANAGED BY:



WORKING IN PARTNERSHIP WITH:

