



Public Workshop 2: discuss design concepts  
May 11<sup>th</sup>, 2016, 5:30 pm, Champlain School

# OAKLEDGE PARK

## UNIVERSALLY ACCESSIBLE PLAYGROUND



# PROJECT HISTORY





# Project History

## **GOALS & NEED** for a regional, Universally Accessible (UA) playground in Burlington, Vermont

- Provide play opportunities for play for EVERYONE
- Support social, physical and cultural diversity
- Strengthen our community
- Replace the existing playground at Oakledge Park
- Provide access to a gorgeous natural setting & Lake Champlain, recreational resources, connection to the Burlington Bike Path
- Support a regional user base
- Establish 'barrier free' site design
- Offer a unique range of recreational play features, rehabilitation equipment, and nature-based experiences for children AND adults.
- Exceeds ADA standards and strive to achieve UA design principles.

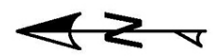
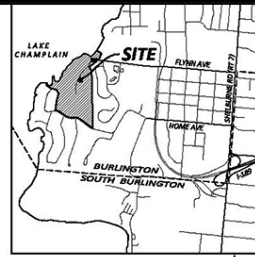
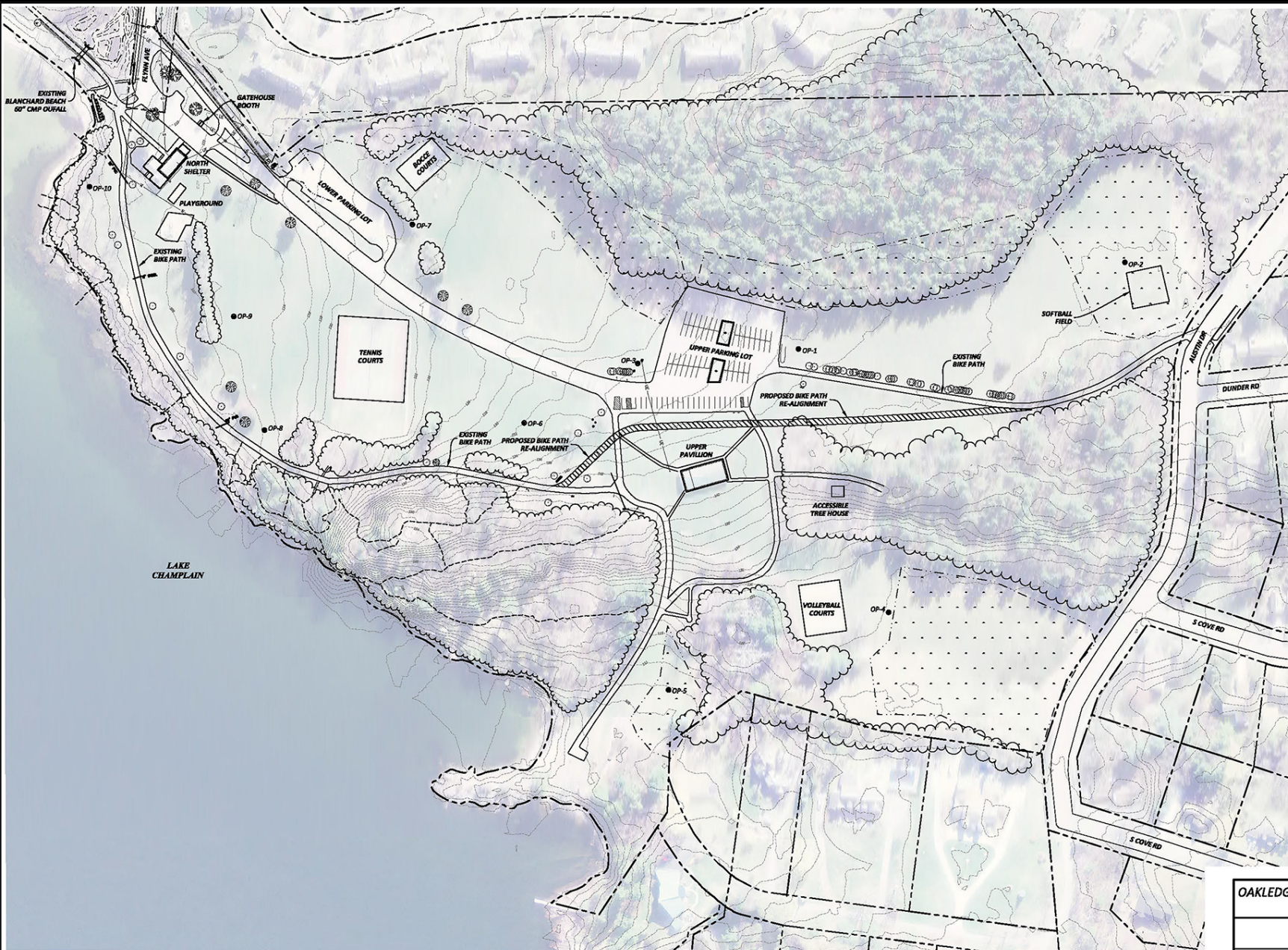




**BPRW MASTER PLAN, 2015**  
**OAKLEDGE PARK SITING STUDY, 2015**



# Oakledge Park Conceptual Master Plan

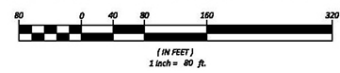


**LEGEND**

	PROPERTY LINE
	EXISTING CONTOUR
	DRAINAGE COURSE
	FOOT PATH
	TREE LINE
	WATER LINE
	SEWER LINE
	UNDERGROUND ELECTRIC
	WET AREA
	PROPOSED BORING LOCATION

- NOTES**
1. THIS IS NOT A BOUNDARY SURVEY. BOUNDARY INFORMATION IS FROM TOWN TAX MAPS.
  2. EXISTING TOPOGRAPHY WAS CREATED FROM CHITTENDEN COUNTY LIDAR (2004).
  3. EXISTING UTILITY INFORMATION IS APPROXIMATE, INCOMPLETE AND NEEDS TO BE FIELD VERIFIED.
  4. WET AREAS ARE APPROXIMATE PENDING FORMAL WETLAND DELINEATION.

**DRAFT**



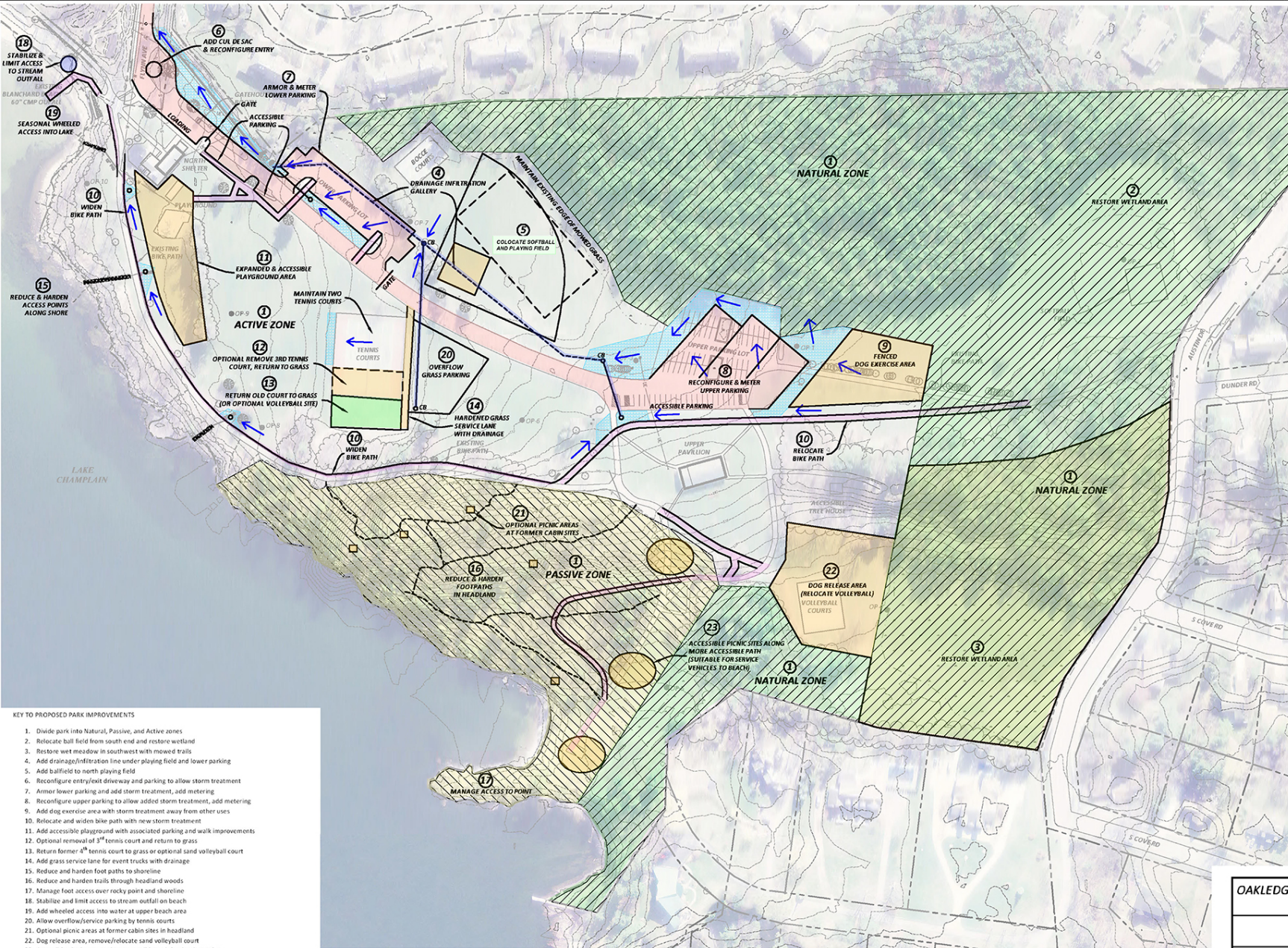
OAKLEDGE PARK STORMWATER MASTER PLANNING PROJECT  
BURLINGTON, VERMONT  
**EXISTING CONDITIONS PLAN**

Stormwater Management | Water Quality | Erosion Control  
430 Shelburne Road P.O. Box 4113  
Burlington, VT 05408  
Mobile: 802.522.4071 | Main: 802.499.2387  
www.watershedca.com

APPROVED BY:	AT	DRAWN BY:	SMS	SCALE:	NOTED
DATE:	6-26-15	CHECKED BY:	AT	SHEET:	1 OF 1



# Oakledge Park Conceptual Master Plan



### LEGEND

- PROPERTY LINE
- - - EXISTING CONTOUR
- - - DRAINAGE COURSE
- - - FOOT PATH
- - - TREE LINE
- - - WATER LINE
- - - SEWER LINE
- - - UNDERGROUND ELECTRIC
- - - WETLAND
- PROPOSED BORING LOCATION

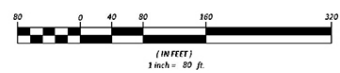
### NOTES

1. THIS IS NOT A BOUNDARY SURVEY. BOUNDARY INFORMATION IS FROM TOWN TAX MAPS.
2. EXISTING TOPOGRAPHY WAS CREATED FROM CHITTENDEN COUNTY LIDAR (2004).
3. EXISTING UTILITY INFORMATION IS APPROXIMATE, INCOMPLETE AND NEEDS TO BE FIELD VERIFIED.

**DRAFT**

### KEY TO PROPOSED PARK IMPROVEMENTS

1. Divide park into Natural, Passive, and Active zones
2. Relocate ball field from south end and restore wetland
3. Restore wet meadow in southwest with mowed trails
4. Add drainage/infiltration line under playing field and lower parking
5. Add ballfield to north playing field
6. Reconfigure entry/exit driveway and parking to allow storm treatment
7. Armor lower parking and add storm treatment, add metering
8. Reconfigure upper parking to allow added storm treatment, add metering
9. Add dog exercise area with storm treatment away from other users
10. Relocate and widen bike paths with new storm treatment
11. Add accessible playground with associated parking and walk improvements
12. Optional removal of 3<sup>rd</sup> tennis court and return to grass
13. Return former 4<sup>th</sup> tennis court to grass or optional sand volleyball court
14. Add grass service lane for event trucks with drainage
15. Reduce and harden foot paths to shoreline
16. Reduce and harden trails through headland woods
17. Manage foot access over rocky point and shoreline
18. Stabilize and limit access to stream outfall on beach
19. Add wheeled access into water at upper beach area
20. Allow overflow/service parking by tennis courts
21. Optional picnic areas at former cabin sites in headland
22. Dog release area, remove/relocate sand volleyball court
23. Accessible picnic groves along accessible path (maintain service vehicle access to beach)



OAKLEDGE PARK STORMWATER MASTER PLANNING PROJECT  
 BURLINGTON, VERMONT  
**PROPOSED CONDITIONS PLAN**



Stormwater Management | Water Quality | Erosion Control  
 430 Shelburne Road P.O. Box 4413  
 Burlington, VT 05405  
 Mobile: 802.322.4871 | Fax: 802.497.2267  
[www.watershedassoc.com](http://www.watershedassoc.com)

APPROVED BY:	AT	DRAWN BY:	SMS	SCALE:	NOTED
DATE:	10-16-15	CHECKED BY:	AT	SHEET:	2 OF 2



# Oakledge Park Conceptual Master Plan



## OAKLEDGE PARK SITING STUDY

### ILLUSTRATIVE CONCEPTUAL SITE PLAN

REVISIONS

NO.	DATE	DESCRIPTION

© WPA ALL RIGHTS RESERVED 2011 DRAWING NO.

JOB NO. 525

SCALE 1" = 80'-0"

DATE 11.02.15



LI.0



# PROJECT TEAM





# The Team



**PEASE** Play and Engagement in Accessible Spaces for Everyone (Advocacy)



# PLAY DESIGN THEMES



# Play Design Themes

Landform, Vegetation, Loose Materials, Uniqueness, Play Anywhere







# UNIVERSAL DESIGN PRINCIPLES

# 7 Principles of Universal Design

## **1 EQUITABLE USE**

- Universal Design is inclusive design and does not segregate.
- Everyone should have an equal opportunity to participate.

## **2 FLEXIBLE USE**

- Each individual will interact with the playground in their own way.

## **3 SIMPLE AND INTUITIVE USE**

- Play features should be clearly understood immediately by children of all ages, physical ability, or cognitive ability.

## **4 PERCEPTIBLE INFORMATION**

- People learn in various modes so design information to appeal to the many senses (Visual, auditory, experiential, etc.).

## **5 TOLERANCE FOR ERROR**

- The ability to try something and fail safely while still being challenged.

## **6 LOW PHYSICAL EFFORT**

- The design should take into consideration the effort required to get from one play feature to the next.

## **7 SIZE AND SPACE FOR APPROACH AND USE**

- Consider the wide variety of body types, sizes, and abilities.



**1 EQUITABLE USE / 2 FLEXIBLE USE / 3 SIMPLE AND INTUITIVE USE / 4 PERCEPTIBLE INFORMATION  
/ 5 TOLERANCE FOR ERROR / 6 LOW PHYSICAL EFFORT / 7 SIZE AND SPACE FOR APPROACH AND USE**





1 EQUITABLE USE / 2 FLEXIBLE USE / 3 SIMPLE AND INTUITIVE USE / 4 PERCEPTIBLE INFORMATION  
/ 5 TOLERANCE FOR ERROR / 6 LOW PHYSICAL EFFORT / 7 SIZE AND SPACE FOR APPROACH AND USE



Underpass Park, Toronto, ON

Playground, Guggenheim Museum, Bilbao, Spain



**1 EQUITABLE USE / 2 FLEXIBLE USE / 3 SIMPLE AND INTUITIVE USE / 4 PERCEPTIBLE INFORMATION / 5 TOLERANCE FOR ERROR / 6 LOW PHYSICAL EFFORT / 7 SIZE AND SPACE FOR APPROACH AND USE**





1 EQUITABLE USE / 2 FLEXIBLE USE / 3 SIMPLE AND INTUITIVE USE / 4 PERCEPTIBLE INFORMATION / 5 TOLERANCE FOR ERROR / 6 LOW PHYSICAL EFFORT / 7 SIZE AND SPACE FOR APPROACH AND USE





1 EQUITABLE USE / 2 FLEXIBLE USE / 3 SIMPLE AND INTUITIVE USE / 4 PERCEPTIBLE INFORMATION  
/ 5 TOLERANCE FOR ERROR / 6 LOW PHYSICAL EFFORT / 7 SIZE AND SPACE FOR APPROACH AND USE





1 EQUITABLE USE / 2 FLEXIBLE USE / 3 SIMPLE AND INTUITIVE USE / 4 PERCEPTIBLE INFORMATION  
/ 5 TOLERANCE FOR ERROR / 6 LOW PHYSICAL EFFORT / 7 SIZE AND SPACE FOR APPROACH AND USE





**1 EQUITABLE USE / 2 FLEXIBLE USE / 3 SIMPLE AND INTUITIVE USE / 4 PERCEPTIBLE INFORMATION  
/ 5 TOLERANCE FOR ERROR / 6 LOW PHYSICAL EFFORT / 7 SIZE AND SPACE FOR APPROACH AND USE**





1 EQUITABLE USE / 2 FLEXIBLE USE / 3 SIMPLE AND INTUITIVE USE / 4 PERCEPTIBLE INFORMATION  
/ 5 TOLERANCE FOR ERROR / 6 LOW PHYSICAL EFFORT / 7 SIZE AND SPACE FOR APPROACH AND USE





1 EQUITABLE USE / 2 FLEXIBLE USE / 3 SIMPLE AND INTUITIVE USE / 4 PERCEPTIBLE INFORMATION  
/ 5 TOLERANCE FOR ERROR / 6 LOW PHYSICAL EFFORT / 7 SIZE AND SPACE FOR APPROACH AND USE





**1 EQUITABLE USE / 2 FLEXIBLE USE / 3 SIMPLE AND INTUITIVE USE / 4 PERCEPTIBLE INFORMATION  
/ 5 TOLERANCE FOR ERROR / 6 LOW PHYSICAL EFFORT / 7 SIZE AND SPACE FOR APPROACH AND USE**





1 EQUITABLE USE / 2 FLEXIBLE USE / 3 SIMPLE AND INTUITIVE USE / 4 PERCEPTIBLE INFORMATION  
/ 5 TOLERANCE FOR ERROR / 6 LOW PHYSICAL EFFORT / 7 SIZE AND SPACE FOR APPROACH AND USE







# REGIONAL SITE ANALYSIS

# Access to Water

-  Park
-  Visual Access
-  Direct Access
-  Bike Path
-  City Limits

Lake Champlain



Leddy Park



North Beach Park



Urban Reserve



Water Front Park



Roundhouse Park



Oakledge Park





# Playgrounds

- Public Park
- Neighborhood Schoolyard
- Bike Path
- City Limits



CP Smith  
Elementary School

Flynn Elementary School

Starr Farm Park

Ethan Allen Park

Appletree Park

Leddy Park

North Beach Park

Roosevelt Park

Integrated Arts Academy

Sustainability Academy at Lawrence Barnes

Skate Park

Battery Park

Champlain Park

Roundhouse Park

Smalley Park

Christ the King School

Baird Park

Oakledge Park

Calahan Park

Lakeside Park

Champlain School

Schmanska Park

Pomeroy Park

Mater Christi School

Burlington School Superintendent

Edmunds Elementary School

Lake Champlain



# Burlington Playgrounds





# OAKLEDGE PARK SITE ANALYSIS





# Oakledge Park Existing Conditions



Oakledge Park  
Existing Conditions Plan



# Oakledge Park Existing Conditions



Oakledge Park  
Existing Conditions Plan





# Oakledge Park Existing Conditions





# Oakledge Park Existing Conditions





# Oakledge Park Existing Conditions





# Oakledge Park Existing Conditions





# Oakledge Park Existing Conditions





# Oakledge Park Existing Conditions



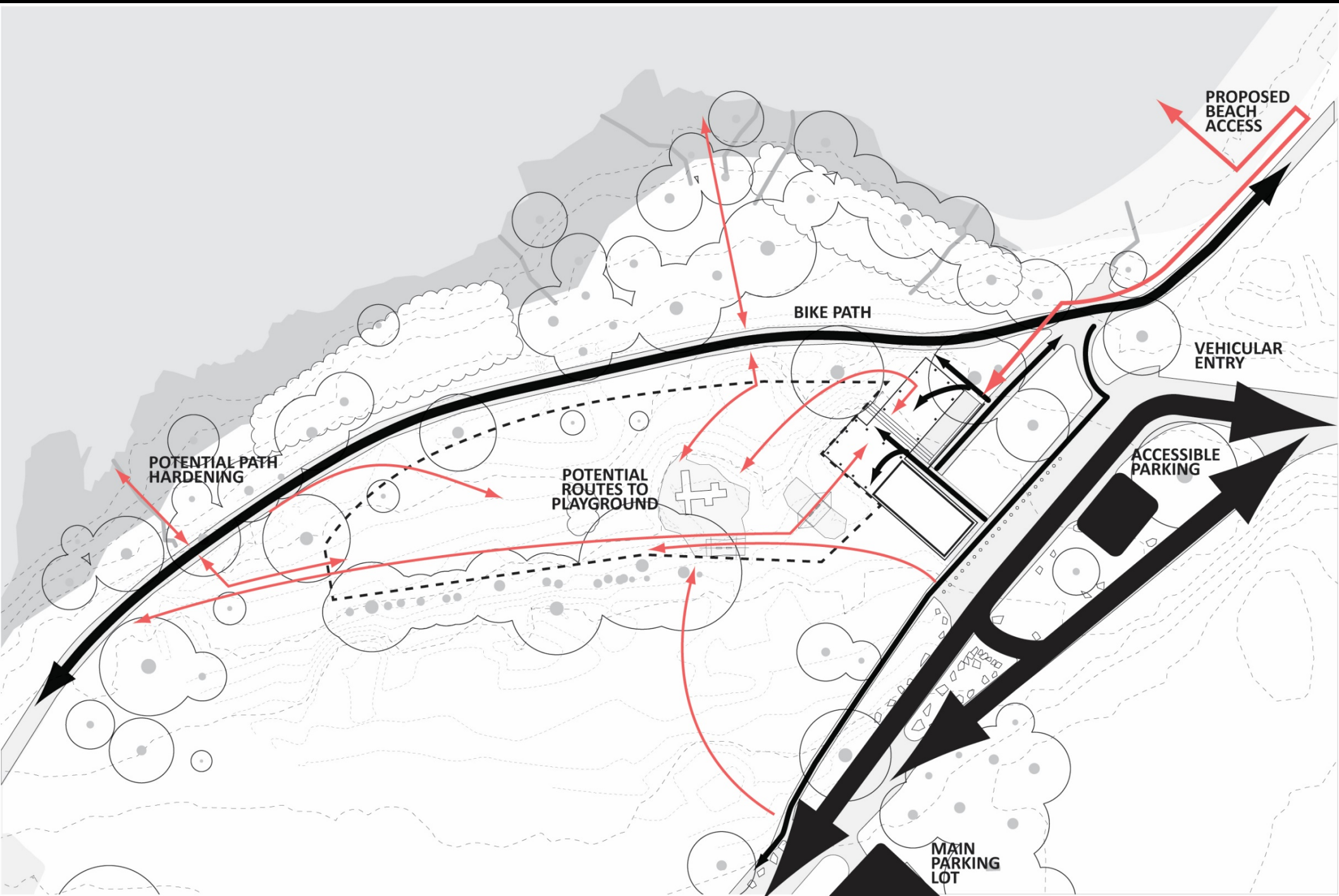


# Oakledge Park Existing Conditions



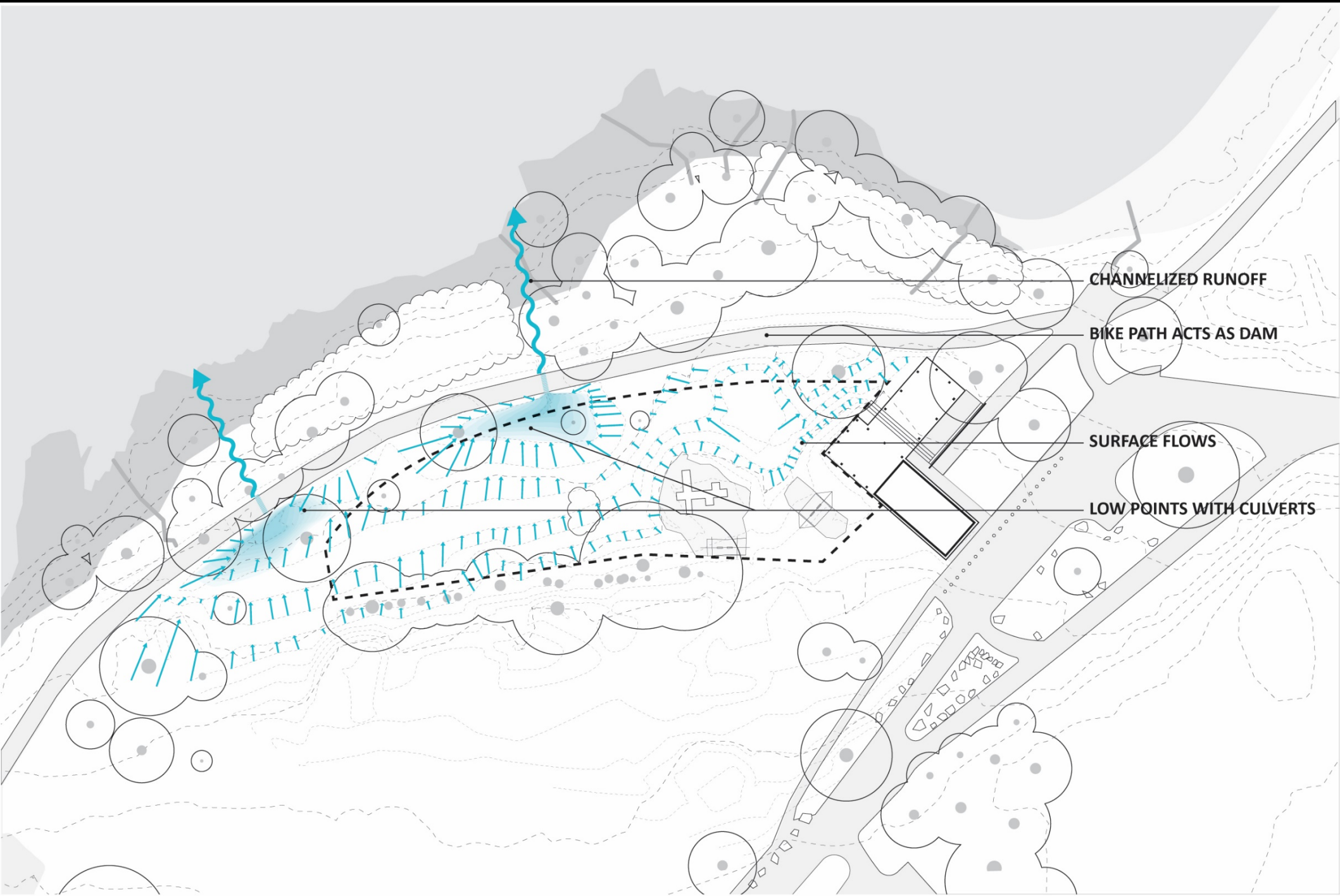


# Oakledge Circulation



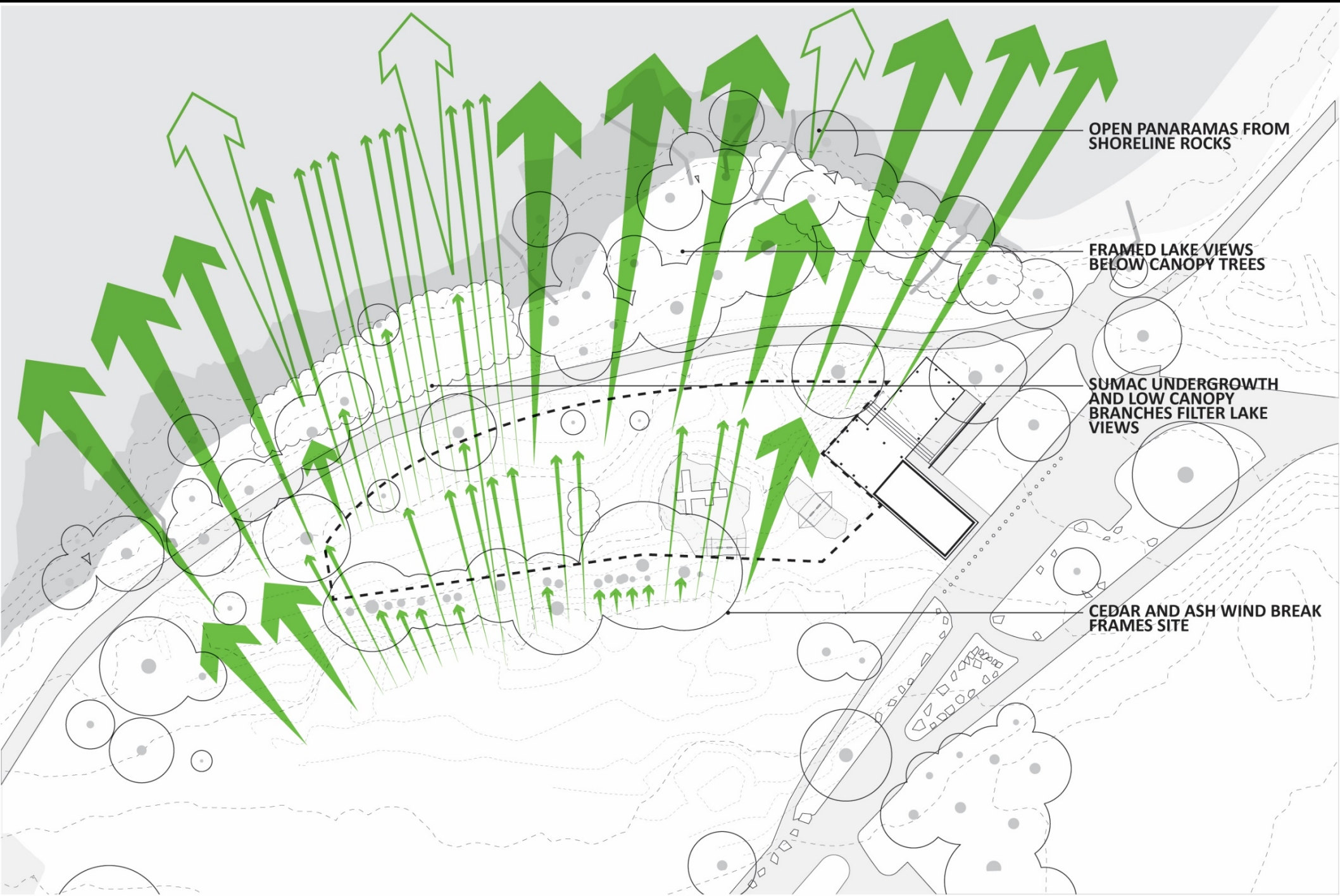


# Oakledge Site Drainage





# Oakledge Viewsheds





# Vegetation





# Vegetation





# Vegetation





# Vegetation





# WHAT WE HEARD





# Potential Program Elements

- Music garden
- Quiet space
- Accessible stage
- Raised sand bed
- Connection to water
- Large-scale slide or bowls built into land (if the opportunity exists)
- Early childhood area (natural components and dramatic play)
- Adult recreation & rehabilitation equipment
- Gardening opportunities
- Fitness equipment
- All accessible swings
- Accessible pathways



# Questions/Comments from 4/12/2016 Workshop Attendees

- Is there a dog park planned for Oakledge?
  - Yes – While not part of the UA Playground project, there is both a fenced and off-leash area for dogs included in the Oakledge Park Siting Study.
- Will there be accessible water access?
  - The Oakledge Siting Study locates a “wheels water access point” at the beach (similar to North Beach). Also, recommended is reducing the number of informal footpath access water access points adjacent to the playground site and “hardening” the access paths that remain.
- The North Beach wheels water access is restricted to park staff hours due to the need of bringing “mats” in and out of the water. Is there an alternative to access the water with wheels without mats?
- Will the bathrooms be made accessible?
  - To be evaluated.
- Will accessible parking be reconfigured at Oakledge?
  - The Oakledge Siting Study shows a redesign of the upper, lower & North Pavilion parking lots. The North Pavilion parking shows 6 new ADA spaces, directly adjacent to the playground site.
- What is the “cost” for access?
  - Equal opportunity Bike Path
  - Accessible placards for ADA spaces
  - Affordable parking pass options
  - Bus stop at City Market is called for, but not yet activated. No plans for bus stop at Oakledge, not sure if bus turning radius is feasible in parking lot.



**DESIGN**



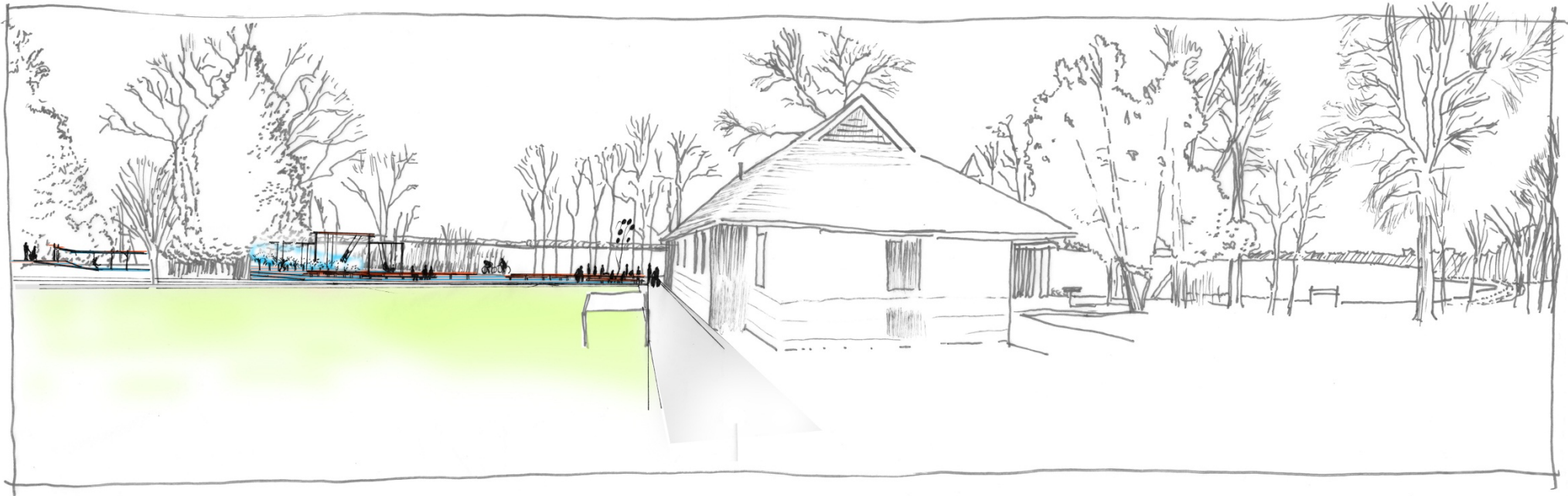


# Concept Studies



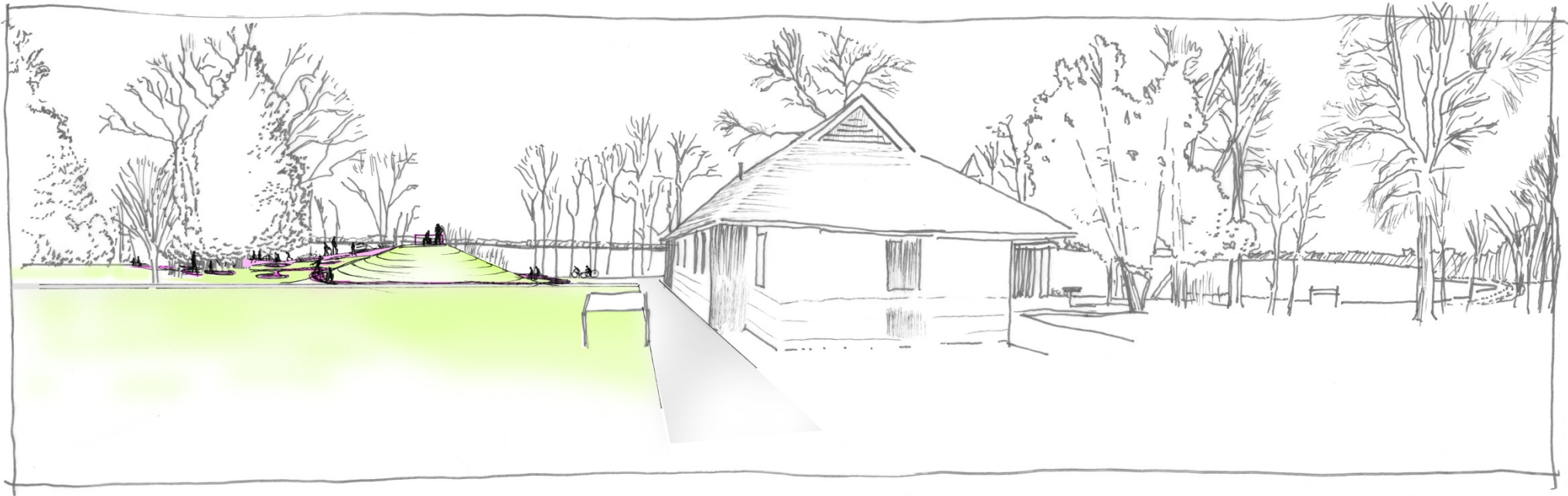


# Concept Studies





# Concept Studies



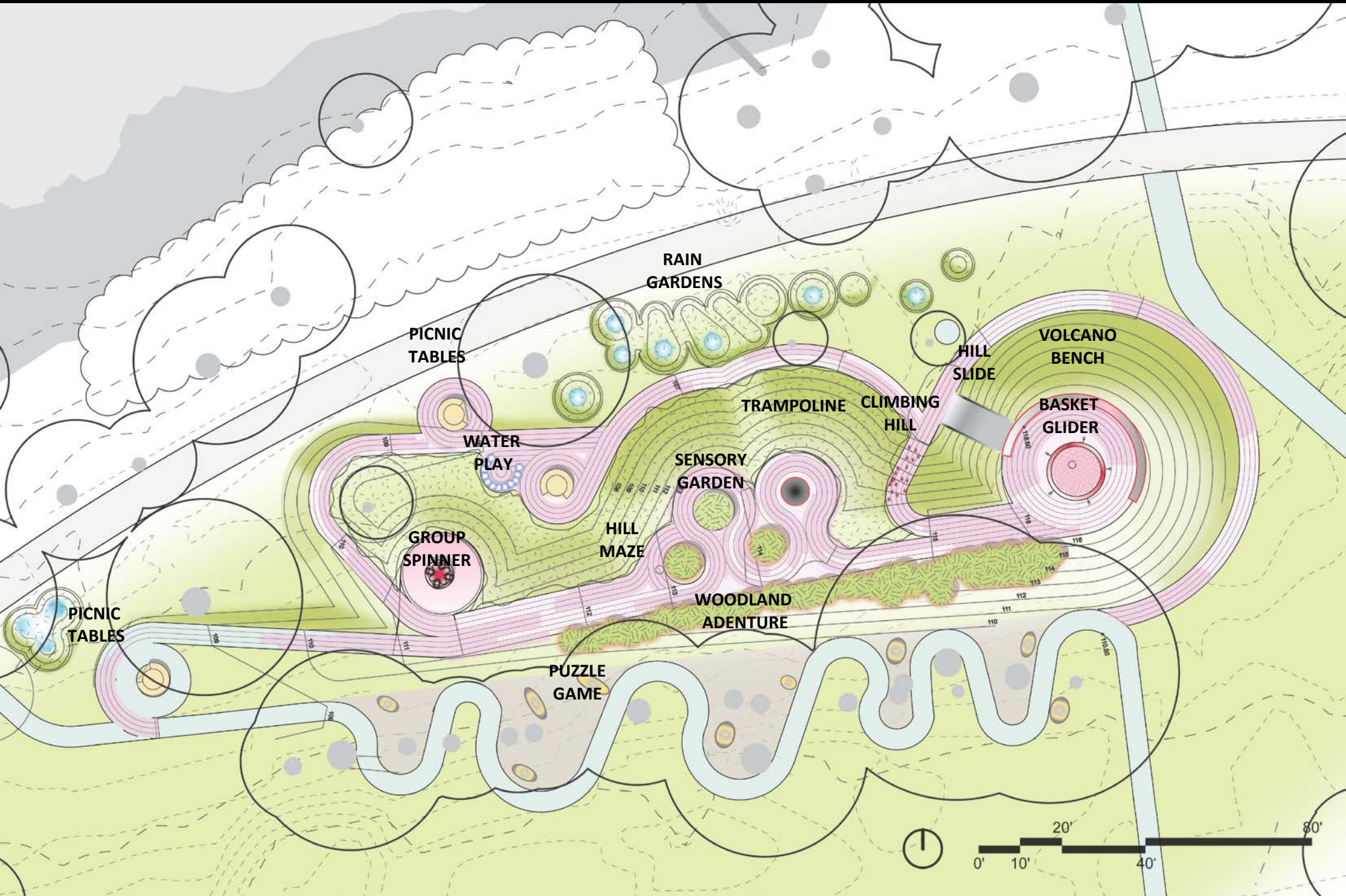


# Schematic Design in Context





# Schematic Design





# PLAY: landform





# PLAY: slide





PLAY: view





PLAY: view





PLAY: climb





PLAY: swing





PLAY: spin





PLAY: spin





PLAY: bounce





PLAY: water: mist





PLAY: water: pump & flow





PLAY: sand: build





PLAY: perform





PLAY: plants: lawn





PLAY: plants: shrub



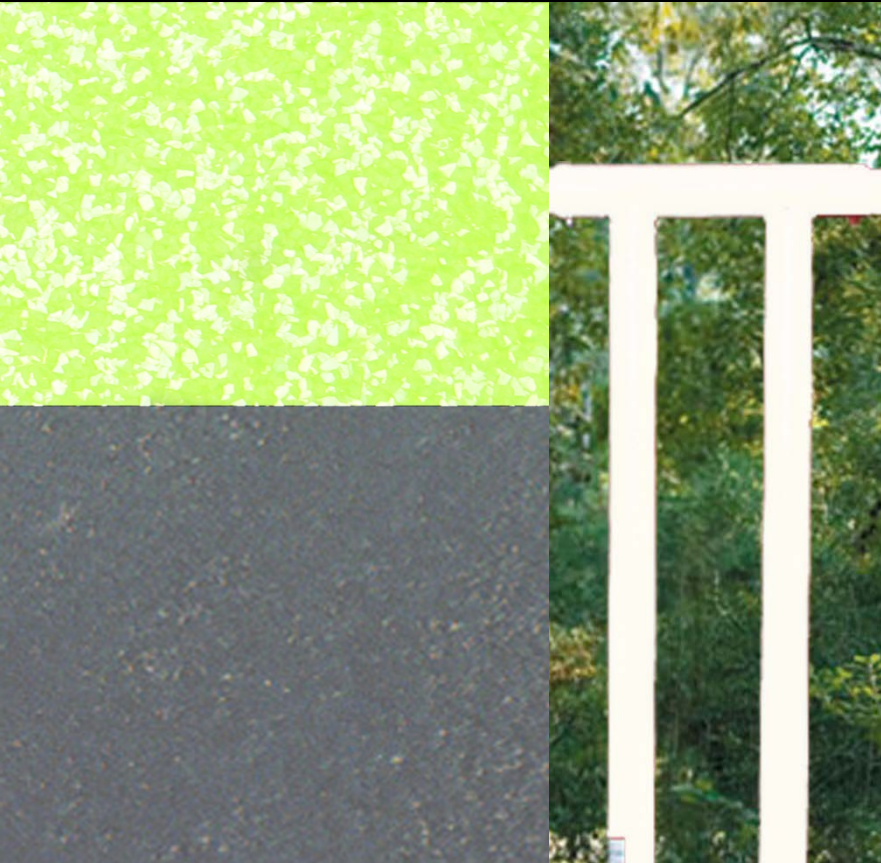


PLAY: plants: meadow





# PLAY: palette





# Schematic View





# Schematic View





# Schematic View





COMMENTS



# Next Steps



Thanks for joining us! Stay tuned for announcements on next workshops!